

Datasheet for ABIN739445
anti-GLUT4 antibody (AA 401-509)

4 Images

2 Publications

[Go to Product page](#)

Overview

Quantity:	100 µL
Target:	GLUT4 (SLC2A4)
Binding Specificity:	AA 401-509
Reactivity:	Human, Mouse, Rat, Pig, Goat, Sheep
Host:	Rabbit
Clonality:	Polyclonal
Conjugate:	This GLUT4 antibody is un-conjugated
Application:	Western Blotting (WB), ELISA, Immunohistochemistry (Paraffin-embedded Sections) (IHC (p)), Immunohistochemistry (Frozen Sections) (IHC (fro)), Flow Cytometry (FACS), Immunofluorescence (Cultured Cells) (IF (cc)), Immunofluorescence (Paraffin-embedded Sections) (IF (p))

Product Details

Immunogen:	KLH conjugated synthetic peptide derived from human GLUT4
Isotype:	IgG
Cross-Reactivity:	Goat, Human, Mouse, Pig, Rat, Sheep
Predicted Reactivity:	Dog,Cow,Rabbit
Purification:	Purified by Protein A.

Target Details

Target:	GLUT4 (SLC2A4)
---------	----------------

Target Details

Alternative Name:	GLUT4 (SLC2A4 Products)
Background:	<p>Synonyms: GLUT4, Solute carrier family 2, facilitated glucose transporter member 4, Glucose transporter type 4, insulin-responsive, GLUT-4, SLC2A4</p> <p>Background: GLUT4 is the facilitated glucose transporter expressed exclusively in adipocytes and muscle cells, and is also known as the "insulin-responsive" glucose transporter. GLUT4 translocates from an ill-defined intracellular compartment to the plasma membrane in response to insulin. The total cellular content of GLUT4 is significantly decreased in adipose cells from many patients with Type II diabetes mellitus, and animals with some types of experimental diabetes.</p>
Gene ID:	6517
UniProt:	P14672
Pathways:	AMPK Signaling , Carbohydrate Homeostasis , Proton Transport , Brown Fat Cell Differentiation , Warburg Effect

Application Details

Application Notes:	WB 1:300-5000 ELISA 1:500-1000 FCM 1:20-100 IHC-P 1:200-400 IHC-F 1:100-500 IF(IHC-P) 1:50-200 IF(IHC-F) 1:50-200 IF(ICC) 1:50-200
Restrictions:	For Research Use only

Handling

Format:	Liquid
Concentration:	1 µg/µL
Buffer:	0.01M TBS(pH 7.4) with 1 % BSA, 0.02 % Proclin300 and 50 % Glycerol.
Preservative:	ProClin
Precaution of Use:	This product contains ProClin: a POISONOUS AND HAZARDOUS SUBSTANCE, which should be handled by trained staff only.

Handling

Storage: 4 °C, -20 °C

Storage Comment: Shipped at 4°C. Store at -20°C for one year. Avoid repeated freeze/thaw cycles.

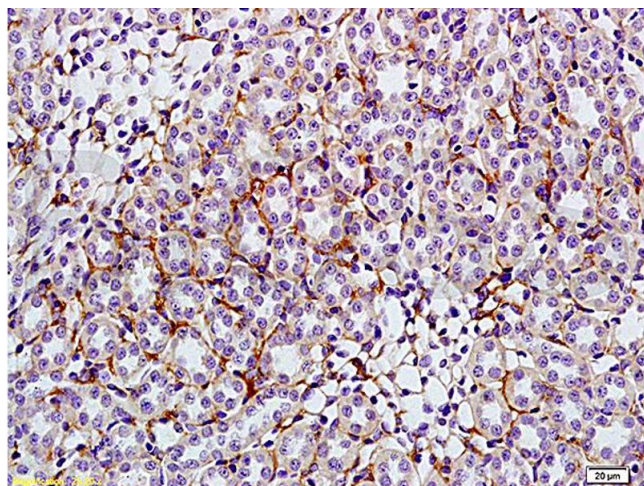
Expiry Date: 12 months

Publications

Product cited in: Sikder, Shukla, Patel, Singh, Rafiq: "High Fat Diet Upregulates Fatty Acid Oxidation and Ketogenesis via Intervention of PPAR- γ ." in: **Cellular physiology and biochemistry : international journal of experimental cellular physiology, biochemistry, and pharmacology**, Vol. 48, Issue 3, pp. 1317-1331, (2018) ([PubMed](#)).

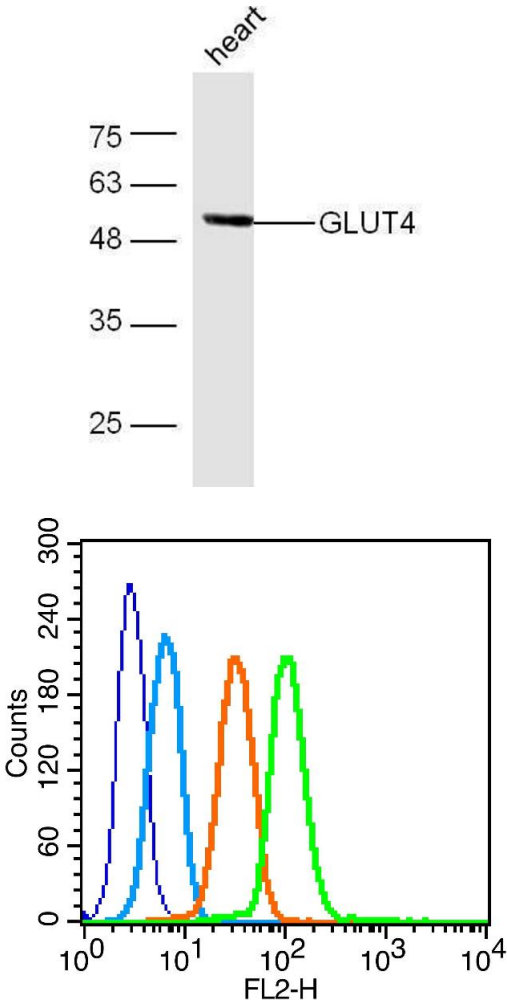
Zhang, Yang, Ren, Qiao, He, Li, Zeng et al.: "Effects of isoleucine on glucose uptake through the enhancement of muscular membrane concentrations of GLUT1 and GLUT4 and intestinal membrane concentrations of Na⁺/glucose co-transporter 1 (SGLT-1) ..." in: **The British journal of nutrition**, Vol. 116, Issue 4, pp. 593-602, (2016) ([PubMed](#)).

Images



Immunohistochemistry

Image 1. Formalin-fixed and paraffin embedded: rat kidney tissue labeled with Anti-GLUT4 Polyclonal Antibody (ABIN739445), Unconjugated at 1:200, followed by conjugation to the secondary antibody and DAB staining



Western Blotting

Image 2. Mouse heart lysates probed with Anti-GLUT4 Polyclonal Antibody at 1:5000 90min in 37°C.

Image 3. K562 cells probed with GLUT4 Polyclonal Antibody, unconjugated at 1:100 dilution for 30 minutes compared to control cells (blue) and isotype control (orange)

Please check the [product details page](#) for more images. Overall 4 images are available for ABIN739445.