

Datasheet for ABIN739815  
**anti-SV2A antibody (AA 451-550)**[Go to Product page](#)

## 1 Image

## Overview

Quantity:	100 µL
Target:	SV2A
Binding Specificity:	AA 451-550
Reactivity:	Human
Host:	Rabbit
Clonality:	Polyclonal
Conjugate:	This SV2A antibody is un-conjugated
Application:	ELISA, Flow Cytometry (FACS), Immunofluorescence (Paraffin-embedded Sections) (IF (p))

## Product Details

Immunogen:	KLH conjugated synthetic peptide derived from human SV2A
Isotype:	IgG
Cross-Reactivity:	Human
Predicted Reactivity:	Mouse,Rat,Dog,Cow,Pig,Horse,Rabbit
Purification:	Purified by Protein A.

## Target Details

Target:	SV2A
Alternative Name:	SV2A ( <a href="#">SV2A Products</a> )
Background:	Synonyms: SV2, Synaptic vesicle glycoprotein 2A, SV2A, KIAA0736, PSEC0174

## Target Details

Background: Plays a role in the control of regulated secretion in neural and endocrine cells, enhancing selectively low-frequency neurotransmission. Positively regulates vesicle fusion by maintaining the readily releasable pool of secretory vesicles (By similarity).

Gene ID: 9900

UniProt: [Q7L0J3](#)

## Application Details

Application Notes: ELISA 1:500-1000  
FCM 1:20-100  
IF(IHC-P) 1:50-200

Restrictions: For Research Use only

## Handling

Format: Liquid

Concentration: 1 µg/µL

Buffer: 0.01M TBS( pH 7.4) with 1 % BSA, 0.02 % Proclin300 and 50 % Glycerol.

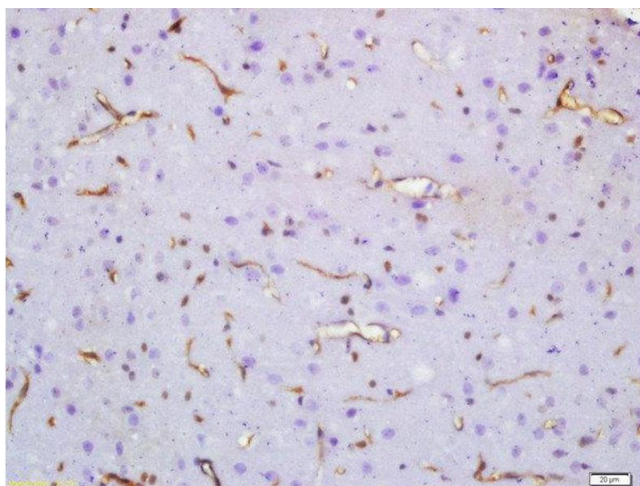
Preservative: ProClin

Precaution of Use: This product contains ProClin: a POISONOUS AND HAZARDOUS SUBSTANCE, which should be handled by trained staff only.

Storage: 4 °C,-20 °C

Storage Comment: Shipped at 4°C. Store at -20°C for one year. Avoid repeated freeze/thaw cycles.

Expiry Date: 12 months



#### Immunohistochemistry (Paraffin-embedded Sections)

**Image 1.** Formalin-fixed and paraffin embedded rat brain labeled with Anti-SV2A Polyclonal Antibody, Unconjugated at 1:200 followed by conjugation to the secondary antibody and DAB staining