

Datasheet for ABIN739845
anti-Amphiphysin antibody (AA 101-200)[Go to Product page](#)

1 Image

Overview

Quantity:	100 µL
Target:	Amphiphysin (AMPH)
Binding Specificity:	AA 101-200
Reactivity:	Rat
Host:	Rabbit
Clonality:	Polyclonal
Conjugate:	This Amphiphysin antibody is un-conjugated
Application:	ELISA, Immunohistochemistry (Paraffin-embedded Sections) (IHC (p)), Immunofluorescence (Cultured Cells) (IF (cc)), Immunofluorescence (Paraffin-embedded Sections) (IF (p)), Immunohistochemistry (Frozen Sections) (IHC (fro))

Product Details

Immunogen:	KLH conjugated synthetic peptide derived from human Amphiphysin
Isotype:	IgG
Cross-Reactivity:	Rat
Predicted Reactivity:	Human,Mouse,Dog,Cow,Horse,Chicken,Rabbit
Purification:	Purified by Protein A.

Target Details

Target:	Amphiphysin (AMPH)
---------	--------------------

Target Details

Alternative Name:	Amphiphysin (AMPH Products)
Background:	<p>Synonyms: Amphiphysin, Amp, AMPH 1, AMPH1, Amphiphysin Stf-Man syndrome with breast cancer 128kD autoantigen, Amphiphysin Stf-Man syndrome with breast cancer 128 kDa autoantigen, Amphiphysin I, CG8604, Damp, dAmph, Dmel\CG8604, HGNC:471, MGC49429, Stf man syndrome with breast cancer 128kD autoantigen, Stf man syndrome with breast cancer 128 kDa autoantigen, AMPH_HUMAN.</p> <p>Background: Amphiphysin is associated with the cytoplasmic surface of synaptic vesicles. A subset of patients with stiff man syndrome who were also affected by breast cancer are positive for auto against this protein. Alternate splicing of this gene results in two transcript variants (Amphiphysin 1 and Amphiphysin 2) encoding different isoforms. Additional splice variants have been described, but their full length sequences have not been determined.</p>
Gene ID:	273

Application Details

Application Notes:	ELISA 1:500-1000 IHC-P 1:200-400 IHC-F 1:100-500 IF(IHC-P) 1:50-200 IF(IHC-F) 1:50-200 IF(ICC) 1:50-200
Restrictions:	For Research Use only

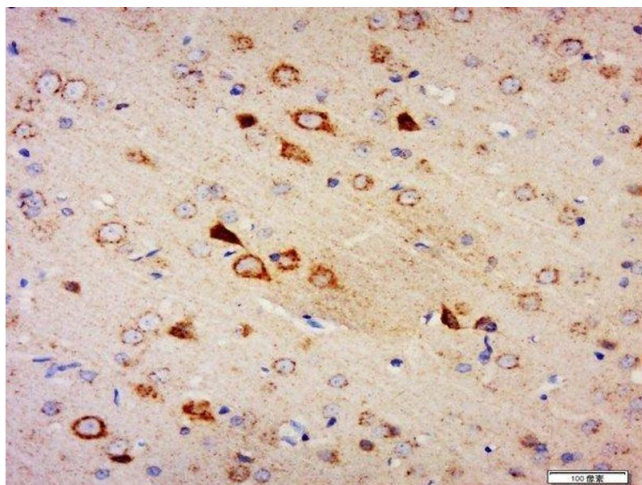
Handling

Format:	Liquid
Concentration:	1 µg/µL
Buffer:	0.01M TBS(pH 7.4) with 1 % BSA, 0.02 % Proclin300 and 50 % Glycerol.
Preservative:	ProClin
Precaution of Use:	This product contains ProClin: a POISONOUS AND HAZARDOUS SUBSTANCE, which should be handled by trained staff only.
Storage:	4 °C,-20 °C
Storage Comment:	Shipped at 4°C. Store at -20°C for one year. Avoid repeated freeze/thaw cycles.

Handling

Expiry Date: 12 months

Images



Immunohistochemistry (Paraffin-embedded Sections)

Image 1. Paraformaldehyde-fixed, paraffin embedded rat brain, Antigen retrieval by boiling in sodium citrate buffer (pH6) for 15min, Block endogenous peroxidase by 3% hydrogen peroxide for 30 minutes, Blocking buffer (normal goat serum) at 37°C for 20min, Antibody incubation with Amphiphysin Polyclonal Antibody, Unconjugated at 1:200 overnight at 4°C, followed by a conjugated secondary and DAB staining.