



[Go to Product page](#)

Datasheet for ABIN739950

## anti-KLRC2 antibody

### 1 Image

#### Overview

Quantity:	100 µL
Target:	KLRC2
Reactivity:	Human
Host:	Rabbit
Clonality:	Polyclonal
Conjugate:	This KLRC2 antibody is un-conjugated
Application:	ELISA, Flow Cytometry (FACS), Immunohistochemistry (Paraffin-embedded Sections) (IHC (p)), Immunofluorescence (Cultured Cells) (IF (cc)), Immunofluorescence (Paraffin-embedded Sections) (IF (p)), Immunohistochemistry (Frozen Sections) (IHC (fro))

#### Product Details

Immunogen:	KLH conjugated synthetic peptide derived from human NKG2C
Isotype:	IgG
Cross-Reactivity:	Monkey
Predicted Reactivity:	Human
Purification:	Purified by Protein A.

#### Target Details

Target:	KLRC2
Alternative Name:	NKG2C ( <a href="#">KLRC2 Products</a> )

## Target Details

---

**Background:** Synonyms: KLRC1, NKG2-A/NKG2-B type II integral membrane protein, CD159a, NKG2-A/B-activating NK receptor, NK cell receptor A, NKG2A, NKG2B, KLRC2, NKG2-C type II integral membrane protein, CD159c, NK cell receptor C, NKG2-C-activating NK receptor, NKG2C, KLRC3, NKG2-E type II integral membrane protein, NK cell receptor E, NKG2-E-activating NK receptor, NKG2E, KLRC4, NKG2-F type II integral membrane protein, NK cell receptor F, NKG2-F-activating NK receptor, NKG2F.

Background: Natural killer (NK) cells are lymphocytes that can mediate the lysis of certain tumor cells and virus infected cells without being previously activated. They can also regulate specific humoral and cell mediated immunity. NK cells preferentially express several calcium dependent (C type) lectins, which have been implicated in the regulation of NK cell function. The group, designated KLRC (NKG2) are expressed primarily in natural killer (NK) cells and encodes a family of transmembrane proteins characterized by a type II membrane orientation (extracellular C terminus) and the presence of a C type lectin domain. The KLRC (NKG2) gene family is located within the NK complex, a region that contains several C type lectin genes preferentially expressed on NK cells.

---

**Molecular Weight:** 25kDa

---

**Gene ID:** 3822

---

**UniProt:** [P26717](#)

## Application Details

---

**Application Notes:** WB(1:100-500)  
Optimal working dilution should be determined by the investigator.

---

**Restrictions:** For Research Use only

## Handling

---

**Format:** Liquid

---

**Concentration:** 1 µg/µL

---

**Buffer:** 0.01M TBS( pH 7.4) with 1 % BSA, 0.02 % Proclin300 and 50 % Glycerol.

---

**Preservative:** Sodium azide

---

**Precaution of Use:** This product contains sodium azide: a POISONOUS AND HAZARDOUS SUBSTANCE which should be handled by trained staff only.

---

**Storage:** 4 °C,-20 °C

---

## Handling

---

Storage Comment: Shipped at 4°C. Store at -20°C for one year. Avoid repeated freeze/thaw cycles.

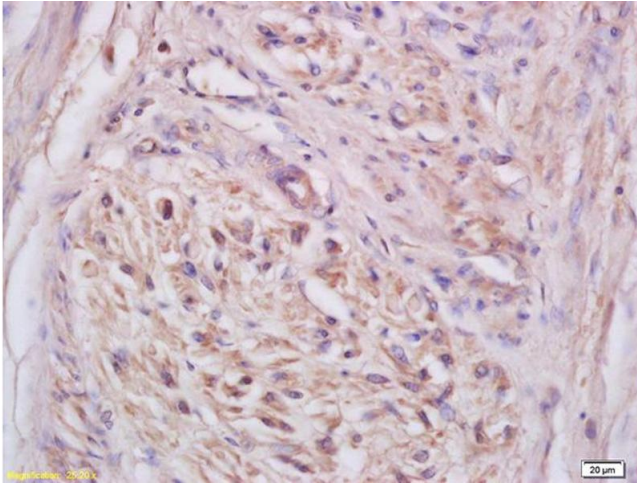
---

Expiry Date: 12 months

---

## Images

---



### Immunohistochemistry

**Image 1.** Formalin-fixed and paraffin embedded human cervical carcinoma labeled with Anti-NKG2C Polyclonal Antibody, Unconjugated (ABIN739950) at 1:200 followed by conjugation to the secondary antibody and DAB staining