



Datasheet for ABIN740055  
**anti-DLK1 antibody (AA 251-350)**



[Go to Product page](#)

3 Images

1 Publication

### Overview

Quantity:	100 µL
Target:	DLK1
Binding Specificity:	AA 251-350
Reactivity:	Human, Mouse, Rat, Sheep
Host:	Rabbit
Clonality:	Polyclonal
Conjugate:	This DLK1 antibody is un-conjugated
Application:	Western Blotting (WB), ELISA, Flow Cytometry (FACS), Immunofluorescence (Paraffin-embedded Sections) (IF (p)), Immunohistochemistry (Paraffin-embedded Sections) (IHC (p))

### Product Details

Immunogen:	KLH conjugated synthetic peptide derived from mouse DLK1
Isotype:	IgG
Cross-Reactivity:	Human, Mouse, Rat, Sheep
Predicted Reactivity:	Pig,Rabbit
Purification:	Purified by Protein A.

### Target Details

Target:	DLK1
Alternative Name:	DLK1 ( <a href="#">DLK1 Products</a> )

## Target Details

---

**Background:** Synonyms: DLK, FA1, ZOG, pG2, DLK-1, PREF1, Delta1, Pref-1, Protein delta homolog 1, DLK1

Background: This gene encodes a transmembrane protein containing six epidermal growth factor repeats. The protein is involved in the differentiation of several cell types, including adipocytes, it is also thought to be a tumor suppressor. It is one of several imprinted genes located in a region of on chr 14q32. Certain mutations in this imprinted region can cause phenotypes similar to maternal and paternal uniparental disomy of chromosome 14 (UPD14). This gene is expressed from the paternal allele. A polymorphism within this gene has been associated with child and adolescent obesity. The mode of inheritance for this polymorphism is polar overdominance, this non-Mendelian inheritance pattern was first described in sheep with the callipyge phenotype, which is characterized by muscle hypertrophy and decreased fat mass. [provided by RefSeq, Mar 2010].

---

**Gene ID:** 8788

**UniProt:** [P80370](#)

## Application Details

---

**Application Notes:** WB 1:300-5000  
ELISA 1:500-1000  
FCM 1:20-100  
IHC-P 1:200-400  
IF(IHC-P) 1:50-200

---

**Restrictions:** For Research Use only

## Handling

---

**Format:** Liquid

**Concentration:** 1 µg/µL

**Buffer:** 0.01M TBS( pH 7.4) with 1 % BSA, 0.02 % Proclin300 and 50 % Glycerol.

**Preservative:** ProClin

**Precaution of Use:** This product contains ProClin: a POISONOUS AND HAZARDOUS SUBSTANCE, which should be handled by trained staff only.

**Storage:** 4 °C,-20 °C

**Storage Comment:** Shipped at 4°C. Store at -20°C for one year. Avoid repeated freeze/thaw cycles.

---

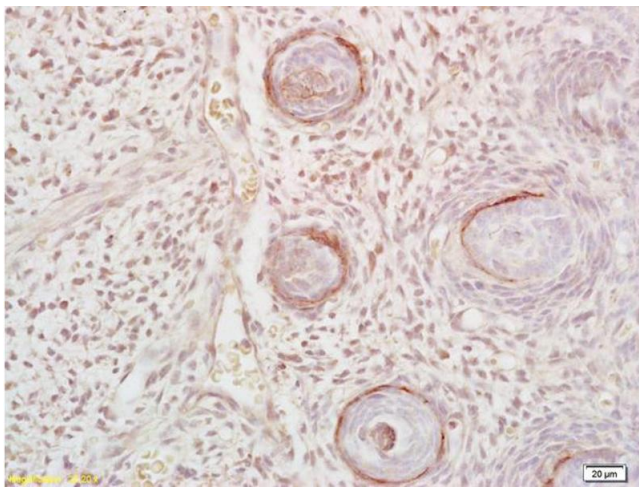
## Handling

Expiry Date: 12 months

## Publications

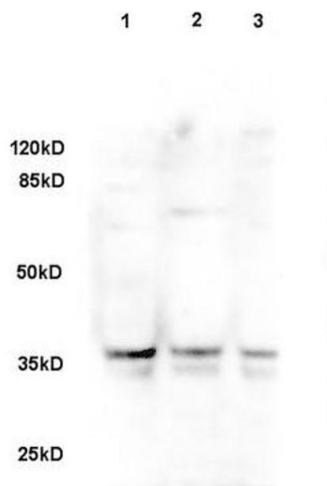
Product cited in: Peng, Jia, Li, Xie, Xie, Zheng: "Expression of Pref-1 and Related Chemokines during theDevelopment of Rat Mesenteric Lymph Nodes." in: **Biomedical and environmental sciences** : **BES**, Vol. 31, Issue 7, pp. 507-514, (2018) ([PubMed](#)).

## Images



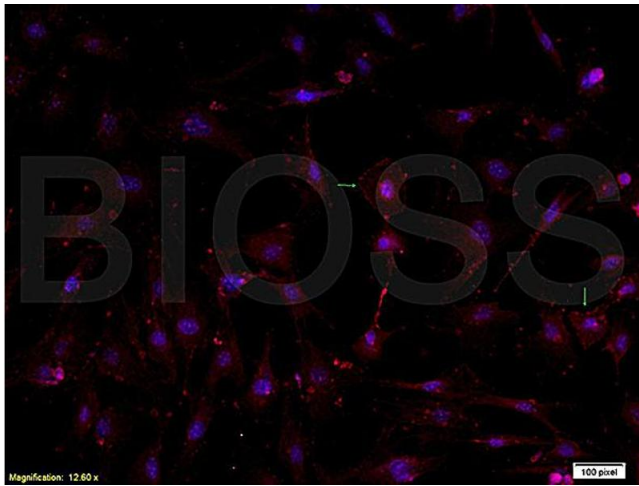
### Immunohistochemistry

**Image 1.** Formalin-fixed and paraffin embedded mouse embryo tissue labeled with Anti-DLK1/DLL1 Polyclonal Antibody, Unconjugated (ABIN740055) at 1:200 followed by conjugation to the secondary antibody and DAB staining



### SDS-PAGE

**Image 2.** Sheep fat cell lysate 30ug, probed with Rabbit Anti-DLK1/DLL1 Polyclonal Antibody (ABIN740055) at 1:200 overnight in 4 °C. Followed by conjugation to the secondary antibody at 1:3000 90min in 37 °C. Predicted and observed band size: 42kDa.



### Immunofluorescence

**Image 3.** Formalin-fixed and paraffin-embedded : sheep fat cells labeled with Rabbit Anti-DLK1 Polyclonal Antibody, Unconjugated (ABIN740055) 1:200 followed by conjugation to the secondary PE antibody and DAPI staining