

Datasheet for ABIN740100
anti-GPC1 antibody (AA 301-400)[Go to Product page](#)

1 Image

Overview

Quantity:	100 µL
Target:	GPC1
Binding Specificity:	AA 301-400
Reactivity:	Human
Host:	Rabbit
Clonality:	Polyclonal
Conjugate:	This GPC1 antibody is un-conjugated
Application:	ELISA, Immunofluorescence (Cultured Cells) (IF (cc)), Immunofluorescence (Paraffin-embedded Sections) (IF (p)), Immunocytochemistry (ICC), Immunohistochemistry (Paraffin-embedded Sections) (IHC (p)), Immunohistochemistry (Frozen Sections) (IHC (fro))

Product Details

Immunogen:	KLH conjugated synthetic peptide derived from human glypican 1
Isotype:	IgG
Predicted Reactivity:	Human,Mouse,Rat,Dog,Cow,Horse
Purification:	Purified by Protein A.

Target Details

Target:	GPC1
Alternative Name:	Glypican 1 (GPC1 Products)

Target Details

Background:	Synonyms: glypican, Glypican-1, GPC1 Background: Cell surface proteoglycan that bears heparan sulfate. Binds, via the heparan sulfate side chains, alpha-4 (V) collagen and participates in Schwann cell myelination (By similarity). May act as a catalyst in increasing the rate of conversion of prion protein PRPN(C) to PRNP(Sc) via associating (via the heparan sulfate side chains) with both forms of PRPN, targeting them to lipid rafts and facilitating their interaction. Required for proper skeletal muscle differentiation by sequestering FGF2 in lipid rafts preventing its binding to receptors (FGFRs) and inhibiting the FGF-mediated signaling.
Gene ID:	2817
UniProt:	P35052
Pathways:	Glycosaminoglycan Metabolic Process , Regulation of Muscle Cell Differentiation

Application Details

Application Notes:	ELISA 1:500-1000 IHC-P 1:200-400 IHC-F 1:100-500 IF(IHC-P) 1:50-200 IF(IHC-F) 1:50-200 IF(ICC) 1:50-200 ICC 1:100-500
Restrictions:	For Research Use only

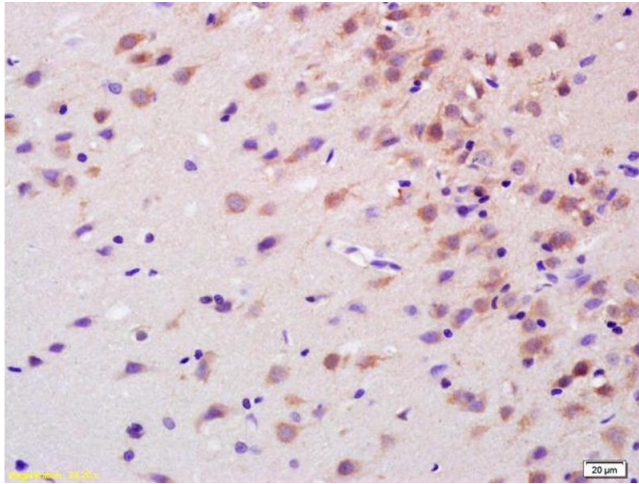
Handling

Format:	Liquid
Concentration:	1 µg/µL
Buffer:	0.01M TBS(pH 7.4) with 1 % BSA, 0.02 % Proclin300 and 50 % Glycerol.
Preservative:	ProClin
Precaution of Use:	This product contains ProClin: a POISONOUS AND HAZARDOUS SUBSTANCE, which should be handled by trained staff only.
Storage:	4 °C,-20 °C
Storage Comment:	Shipped at 4°C. Store at -20°C for one year. Avoid repeated freeze/thaw cycles.

Handling

Expiry Date: 12 months

Images



Immunohistochemistry

Image 1. Formalin-fixed and paraffin embedded rat brain labeled with Anti-Glypican 1/GPC1 Polyclonal Antibody, Unconjugated (ABIN740100) at 1:200 followed by conjugation to the secondary antibody and DAB staining.