

Datasheet for ABIN740265
anti-ENPP2 antibody (AA 601-700)[Go to Product page](#)

2 Images

Overview

Quantity:	100 µL
Target:	ENPP2
Binding Specificity:	AA 601-700
Reactivity:	Human
Host:	Rabbit
Clonality:	Polyclonal
Conjugate:	This ENPP2 antibody is un-conjugated
Application:	Western Blotting (WB), ELISA, Immunofluorescence (Cultured Cells) (IF (cc)), Immunofluorescence (Paraffin-embedded Sections) (IF (p)), Immunohistochemistry (Paraffin- embedded Sections) (IHC (p)), Immunohistochemistry (Frozen Sections) (IHC (fro))

Product Details

Immunogen:	KLH conjugated synthetic peptide derived from human ENPP2
Isotype:	IgG
Cross-Reactivity:	Human
Predicted Reactivity:	Mouse,Rat,Dog,Cow,Pig,Horse,Rabbit
Purification:	Purified by Protein A.

Target Details

Target:	ENPP2
---------	-------

Target Details

Alternative Name: ENPP2 ([ENPP2 Products](#))

Background: Synonyms: ATX, NPP2, ATX-X, PDNP2, LysoPLD, AUTOTAXIN, PD-IALPHA, Ectonucleotide pyrophosphatase/phosphodiesterase family member 2, E-NPP 2, Extracellular lysophospholipase D, ENPP2

Background: Hydrolyzes lysophospholipids to produce lysophosphatidic acid (LPA) in extracellular fluids. Major substrate is lysophosphatidylcholine. Also can act on sphingosylphosphorylcholine producing sphingosine-1-phosphate, a modulator of cell motility. Can hydrolyze, in vitro, bis-pNPP, to some extent pNP-TMP, and barely ATP. Involved in several motility-related processes such as angiogenesis and neurite outgrowth. Acts as an angiogenic factor by stimulating migration of smooth muscle cells and microtubule formation. Stimulates migration of melanoma cells, probably via a pertussis toxin-sensitive G protein. May have a role in induction of parturition. Possible involvement in cell proliferation and adipose tissue development. Tumor cell motility-stimulating factor.

Gene ID: 5168

UniProt: [Q13822](#)

Application Details

Application Notes: WB 1:300-5000
ELISA 1:500-1000
IHC-P 1:200-400
IHC-F 1:100-500
IF(IHC-P) 1:50-200
IF(IHC-F) 1:50-200
IF(ICC) 1:50-200

Restrictions: For Research Use only

Handling

Format: Liquid

Concentration: 1 µg/µL

Buffer: 0.01M TBS(pH 7.4) with 1 % BSA, 0.02 % Proclin300 and 50 % Glycerol.

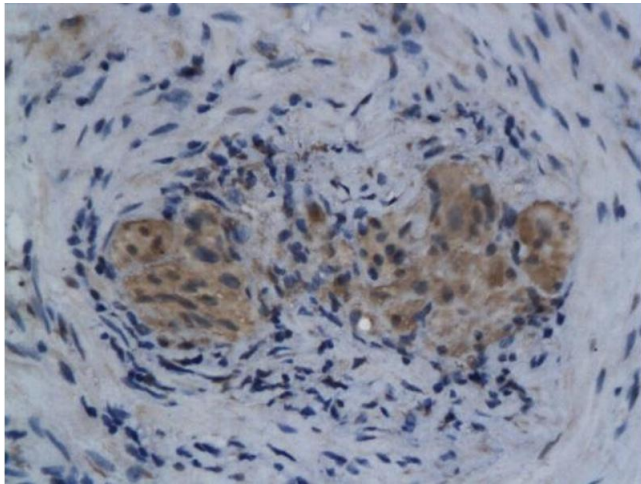
Preservative: ProClin

Precaution of Use: This product contains ProClin: a POISONOUS AND HAZARDOUS SUBSTANCE, which should be

Handling

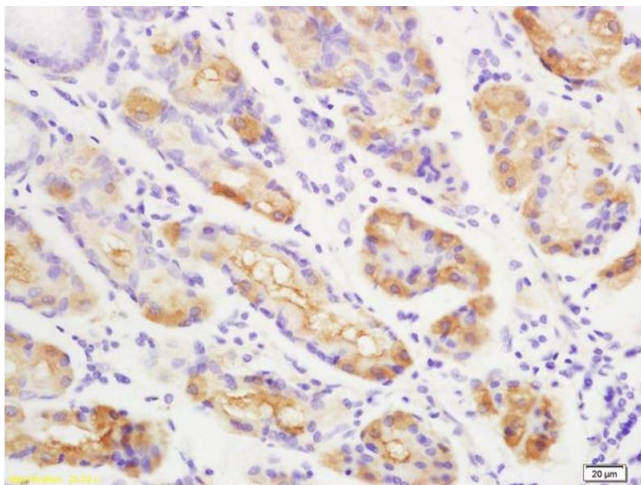
	handled by trained staff only.
Storage:	4 °C,-20 °C
Storage Comment:	Shipped at 4°C. Store at -20°C for one year. Avoid repeated freeze/thaw cycles.
Expiry Date:	12 months

Images



Immunohistochemistry

Image 1. Formalin-fixed and paraffin embedded human colorectal cancer labeled with Anti-Anei-ATX/Autotaxin Polyclonal Antibody, Unconjugated (ABIN740265) followed by conjugation to the secondary antibody



Immunohistochemistry

Image 2. Formalin-fixed and paraffin embedded human gastric carcinoma labeled with Anti-Anei-ATX/Autotaxin Polyclonal Antibody, Unconjugated (ABIN740265) at 1:200 followed by conjugation to the secondary antibody