

Datasheet for ABIN740415  
**anti-PPM1D antibody (AA 201-300)**[Go to Product page](#)

3 Images

1 Publication

## Overview

Quantity:	100 µL
Target:	PPM1D
Binding Specificity:	AA 201-300
Reactivity:	Human
Host:	Rabbit
Clonality:	Polyclonal
Conjugate:	This PPM1D antibody is un-conjugated
Application:	Western Blotting (WB), ELISA, Immunofluorescence (Cultured Cells) (IF (cc)), Immunohistochemistry (Paraffin-embedded Sections) (IHC (p))

## Product Details

Immunogen:	KLH conjugated synthetic peptide derived from human PPM1D
Isotype:	IgG
Cross-Reactivity:	Human
Predicted Reactivity:	Mouse,Rat,Dog,Cow,Pig,Chicken
Purification:	Purified by Protein A.

## Target Details

Target:	PPM1D
Alternative Name:	PPM1D ( <a href="#">PPM1D Products</a> )

## Target Details

Background:	Synonyms: WIP1, PP2C-DELTA, Protein phosphatase 1D, Protein phosphatase 2C isoform delta, Protein phosphatase magnesium-dependent 1 delta, p53-induced protein phosphatase 1, PPM1D  Background: Required for the relief of p53-dependent checkpoint mediated cell cycle arrest. Binds to and dephosphorylates 'Ser-15' of TP53 and 'Ser-345' of CHEK1 which contributes to the functional inactivation of these proteins.
Gene ID:	8493
UniProt:	<a href="#">O15297</a>
Pathways:	<a href="#">p53 Signaling</a> , <a href="#">Cell Division Cycle</a>

## Application Details

Application Notes:	WB 1:300-5000 ELISA 1:500-1000 IHC-P 1:200-400 IF(ICC) 1:50-200
Restrictions:	For Research Use only

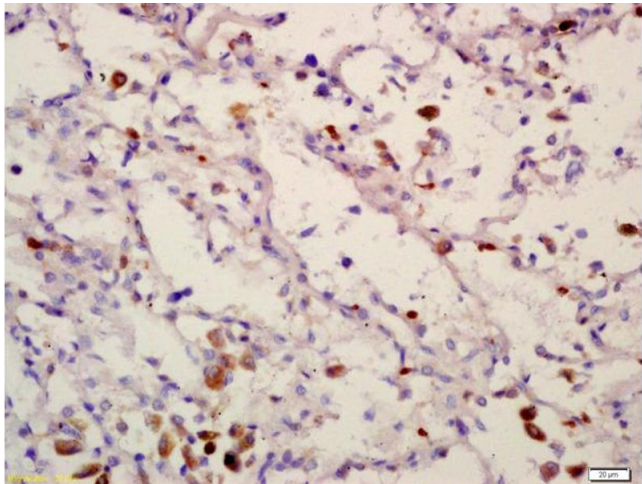
## Handling

Format:	Liquid
Concentration:	1 µg/µL
Buffer:	0.01M TBS( pH 7.4) with 1 % BSA, 0.02 % Proclin300 and 50 % Glycerol.
Preservative:	ProClin
Precaution of Use:	This product contains ProClin: a POISONOUS AND HAZARDOUS SUBSTANCE, which should be handled by trained staff only.
Storage:	4 °C, -20 °C
Storage Comment:	Shipped at 4°C. Store at -20°C for one year. Avoid repeated freeze/thaw cycles.
Expiry Date:	12 months

## Publications

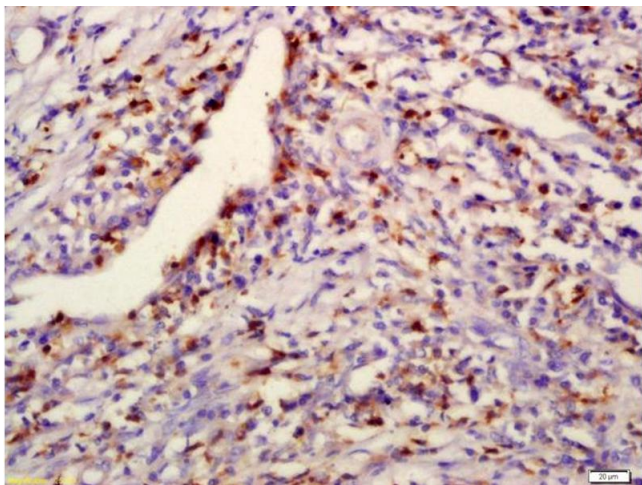
Product cited in:	Wang, Cui, Wen, Guo, Zhang, Chen: "Cisplatin induces HepG2 cell cycle arrest through targeting specific long noncoding RNAs and the p53 signaling pathway." in: <b>Oncology letters</b> , Vol. 12,
-------------------	--

Images



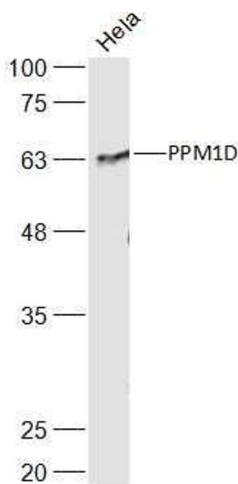
Immunohistochemistry

**Image 1.** Formalin-fixed and paraffin embedded human lung carcinoma labeled with Anti-PPM1D Polyclonal Antibody, Unconjugated (ABIN740415) at 1:200 followed by conjugation to the secondary antibody and DAB staining



Immunohistochemistry

**Image 2.** Formalin-fixed and paraffin embedded human laryngocarcinoma labeled with Anti-PPM1D Polyclonal Antibody, Unconjugated (ABIN740415) at 1:200 followed by conjugation to the secondary antibody and DAB staining



Western Blotting

**Image 3.** HeLa lysates probed with PPM1D Polyclonal Antibody, Unconjugated at 1:500 dilution and 4°C overnight incubation. Followed by conjugated secondary antibody incubation at 1:10000 for 60 min at 37°C.