

Datasheet for ABIN740520
anti-CLEC7A antibody (AA 41-140)

3 Images

[Go to Product page](#)

Overview

Quantity:	100 µL
Target:	CLEC7A
Binding Specificity:	AA 41-140
Reactivity:	Human, Mouse, Rat
Host:	Rabbit
Clonality:	Polyclonal
Conjugate:	This CLEC7A antibody is un-conjugated
Application:	Flow Cytometry (FACS), Western Blotting (WB), ELISA, Immunohistochemistry (Paraffin-embedded Sections) (IHC (p))

Product Details

Immunogen:	KLH conjugated synthetic peptide derived from human Beta-glucan receptor
Isotype:	IgG
Cross-Reactivity:	Human, Mouse, Rat
Purification:	Purified by Protein A.

Target Details

Target:	CLEC7A
Alternative Name:	beta Glucan Receptor (CLEC7A Products)
Background:	Synonyms: BGR, CD369, CANDF4, DECTIN1, CLECSF12, C-type lectin domain family 7 member

Target Details

A, Beta-glucan receptor, C-type lectin superfamily member 12, Dendritic cell-associated C-type lectin 1, DC-associated C-type lectin 1, Dectin-1, CLEC7A, UNQ539/PRO1082

Background: Lectin that functions as pattern receptor specific for beta-1,3-linked and beta-1,6-linked glucans, such as cell wall constituents from pathogenic bacteria and fungi. Necessary for the TLR2-mediated inflammatory response and for TLR2-mediated activation of NF-kappa-B.

Enhances cytokine production in macrophages and dendritic cells. Mediates production of reactive oxygen species in the cell. Mediates phagocytosis of C.albicans conidia. Binds T-cells in a way that does not involve their surface glycans and plays a role in T-cell activation.

Stimulates T-cell proliferation (By similarity).

Gene ID: 64581

UniProt: [Q9BXN2](#)

Pathways: [Activation of Innate immune Response](#)

Application Details

Application Notes: WB 1:300-5000
ELISA 1:500-1000
IHC-P 1:200-400

Restrictions: For Research Use only

Handling

Format: Liquid

Concentration: 1 µg/µL

Buffer: 0.01M TBS(pH 7.4) with 1 % BSA, 0.02 % Proclin300 and 50 % Glycerol.

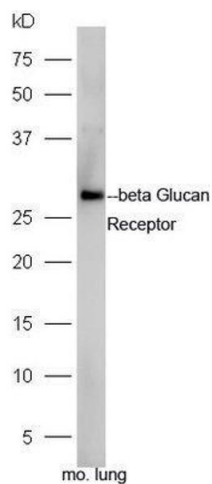
Preservative: ProClin

Precaution of Use: This product contains ProClin: a POISONOUS AND HAZARDOUS SUBSTANCE, which should be handled by trained staff only.

Storage: 4 °C,-20 °C

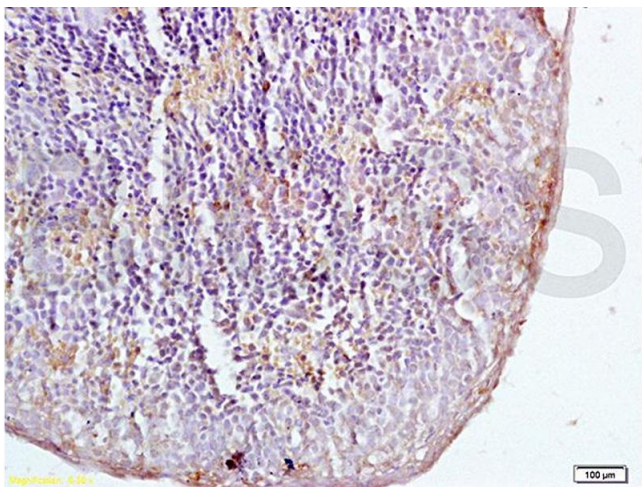
Storage Comment: Shipped at 4°C. Store at -20°C for one year. Avoid repeated freeze/thaw cycles.

Expiry Date: 12 months



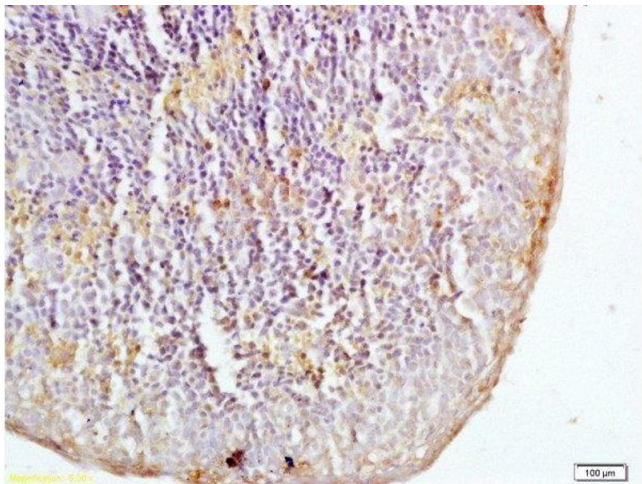
Western Blotting

Image 1. Mouse lung lysates probed with Rabbit Anti-Beta Glucan Receptor Polyclonal Antibody, Unconjugated at 1:5000 for 90 min at 37°C.



Immunohistochemistry

Image 2. Formalin-fixed and mouse spleen tissue labeled with Anti-DECTIN-1/CLECSF12/beta Glucan Receptor Polyclonal Antibody, Unconjugated (ABIN740520) at 1:200 followed by conjugation to the secondary antibody and DAB staining



Immunohistochemistry (Paraffin-embedded Sections)

Image 3. Formalin-fixed and mouse spleen tissue labeled with Anti-DECTIN-1/CLECSF12/beta Glucan Receptor Polyclonal Antibody, Unconjugated at 1:200 followed by conjugation to the secondary antibody and DAB staining