



[Go to Product page](#)

Datasheet for ABIN741180

anti-KISS1R antibody (AA 121-200)

2 Images

2 Publications

Overview

| | |
|----------------------|---|
| Quantity: | 100 µL |
| Target: | KISS1R |
| Binding Specificity: | AA 121-200 |
| Reactivity: | Human, Mouse, Rat |
| Host: | Rabbit |
| Clonality: | Polyclonal |
| Conjugate: | This KISS1R antibody is un-conjugated |
| Application: | Western Blotting (WB), ELISA, Immunohistochemistry (Paraffin-embedded Sections) (IHC (p)), Immunohistochemistry (Frozen Sections) (IHC (fro)) |

Product Details

| | |
|-----------------------|--|
| Immunogen: | KLH conjugated synthetic peptide derived from human KISS1 receptor |
| Isotype: | IgG |
| Cross-Reactivity: | Human, Mouse, Rat |
| Predicted Reactivity: | Dog, Sheep, Pig, Guinea Pig |
| Purification: | Purified by Protein A. |

Target Details

| | |
|-------------------|--|
| Target: | KISS1R |
| Alternative Name: | Kiss1 Receptor (KISS1R Products) |

Target Details

Background: Synonyms: HH8, CPPB1, GPR54, AXOR12, KISS-1R, HOT7T175, KISS-1 receptor, G-protein coupled receptor 54, G-protein coupled receptor OT7T175, Hypogonadotropin-1, Kisspeptins receptor, Metastin receptor, KISS1R

Background: Receptor for metastin (kisspeptin-54 or kp-54), a C-terminally amidated peptide of KiSS1. KiSS1 is a metastasis suppressor protein that suppresses metastases in malignant melanomas and in some breast carcinomas without affecting tumorigenicity. The metastasis suppressor properties may be mediated in part by cell cycle arrest and induction of apoptosis in malignant cells. The receptor is essential for normal gonadotropin-released hormone physiology and for puberty. The hypothalamic KiSS1/KISS1R system is a pivotal factor in central regulation of the gonadotropic axis at puberty and in adulthood. The receptor is also probably involved in the regulation and fine-tuning of trophoblast invasion generated by the trophoblast itself. Analysis of the transduction pathways activated by the receptor identifies coupling to phospholipase C and intracellular calcium release through pertussis toxin-insensitive G(q) proteins.

Gene ID: 84634

UniProt: [Q969F8](#)

Application Details

Application Notes: WB 1:300-5000
ELISA 1:500-1000
IHC-P 1:200-400
IHC-F 1:100-500

Restrictions: For Research Use only

Handling

Format: Liquid

Concentration: 1 µg/µL

Buffer: 0.01M TBS(pH 7.4) with 1 % BSA, 0.02 % Proclin300 and 50 % Glycerol.

Preservative: ProClin

Precaution of Use: This product contains ProClin: a POISONOUS AND HAZARDOUS SUBSTANCE, which should be handled by trained staff only.

Storage: 4 °C, -20 °C

Handling

Storage Comment: Shipped at 4°C. Store at -20°C for one year. Avoid repeated freeze/thaw cycles.

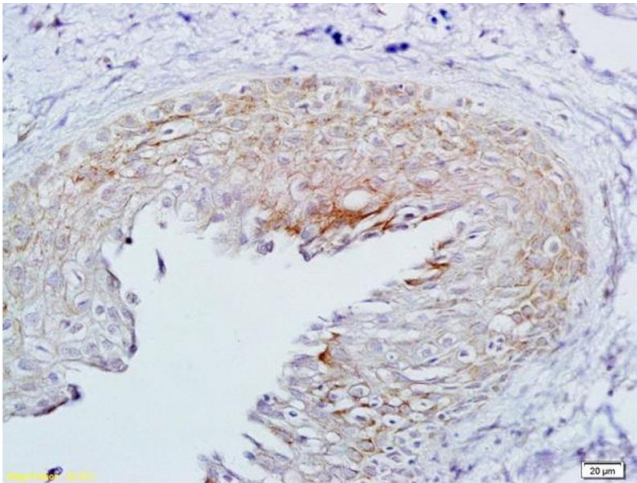
Expiry Date: 12 months

Publications

Product cited in: Luo, Li, Li, Zhang, Zhang: "Leptin/leptinR-kisspeptin/kiss1r-GnRH pathway reacting to regulate puberty onset during negative energy balance." in: **Life sciences**, Vol. 153, pp. 207-12, (2016) ([PubMed](#)).

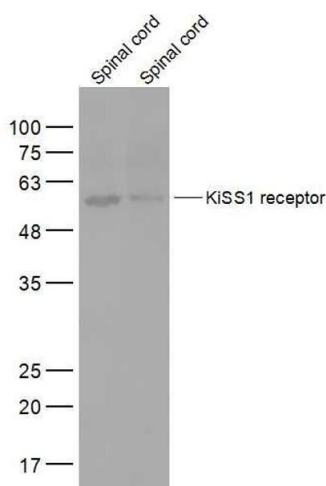
Luo, Hou, Yin, Zhang: "Expression of kisspeptin/kiss1r system in developing hypothalamus of female rat and the possible effects on reproduction development and maintenance." in: **Journal of the Chinese Medical Association : JCMA**, Vol. 79, Issue 10, pp. 546-53, (2016) ([PubMed](#)).

Images



Immunohistochemistry

Image 1. Formalin-fixed and paraffin embedded rat ovarian tissue labeled with Anti-KiSS1 receptor Polyclonal Antibody, Unconjugated (ABIN741180) at 1:200 followed by conjugation to the secondary antibody and DAB staining



Western Blotting

Image 2. Lane 1: Mouse Spinal cord lysates Lane 2: Rat Spinal cord lysates probed with KiSS1 receptor Polyclonal Antibody, Unconjugated at 1:2000 dilution and 4°C overnight incubation. Followed by conjugated secondary antibody incubation at 1:10000 for 60 min at 37°C.