



[Go to Product page](#)

Datasheet for ABIN741210
anti-eEF1A1 antibody (AA 131-230)

2 Images

Overview

Quantity:	100 µL
Target:	eEF1A1 (EEF1A1)
Binding Specificity:	AA 131-230
Reactivity:	Human, Mouse, Rat
Host:	Rabbit
Clonality:	Polyclonal
Conjugate:	This eEF1A1 antibody is un-conjugated
Application:	Western Blotting (WB), ELISA, Immunofluorescence (Cultured Cells) (IF (cc)), Immunofluorescence (Paraffin-embedded Sections) (IF (p)), Immunohistochemistry (Paraffin-embedded Sections) (IHC (p)), Immunohistochemistry (Frozen Sections) (IHC (fro))

Product Details

Immunogen:	KLH conjugated synthetic peptide derived from human eEF1A1
Isotype:	IgG
Specificity:	May crossreact with EEF1A1P5 due to high sequence similarity.
Cross-Reactivity:	Human, Mouse, Rat
Predicted Reactivity:	Dog,Cow,Pig,Horse,Chicken,Rabbit
Purification:	Purified by Protein A.

Target Details

Target:	eEF1A1 (EEF1A1)
Alternative Name:	eEF1A1 (EEF1A1 Products)
Background:	<p>Synonyms: CCS3, EF1A, PTI1, CCS-3, EE1A1, EEF-1, EEF1A, EF-Tu, LENG7, eEF1A-1, GRAF-1EF, HNGC:16303, Elongation factor 1-alpha 1, EF-1-alpha-1, Elongation factor Tu, Eukaryotic elongation factor 1 A-1, Leukocyte receptor cluster member 7, EEF1A1</p> <p>Background: This protein promotes the GTP-dependent binding of aminoacyl-tRNA to the A-site of ribosomes during protein biosynthesis. With PARP1 and TXK, forms a complex that acts as a T helper 1 (Th1) cell-specific transcription factor and binds the promoter of IFN-gamma to directly regulate its transcription, and is thus involved importantly in Th1 cytokine production.</p>
Gene ID:	1915
UniProt:	P68104

Application Details

Application Notes:	WB 1:300-5000 ELISA 1:500-1000 IHC-P 1:200-400 IHC-F 1:100-500 IF(IHC-P) 1:50-200 IF(IHC-F) 1:50-200 IF(ICC) 1:50-200
Restrictions:	For Research Use only

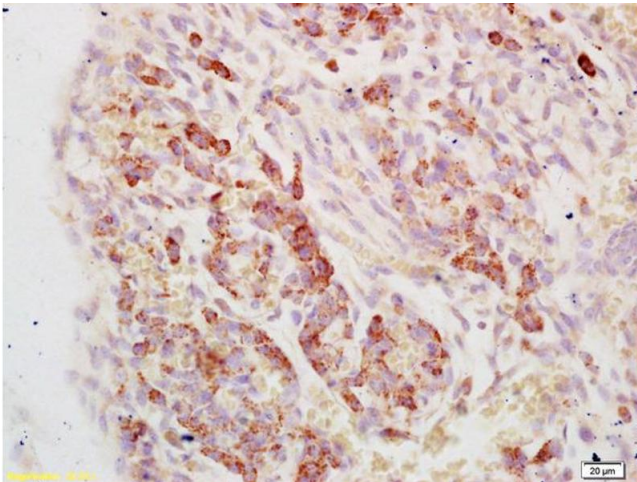
Handling

Format:	Liquid
Concentration:	1 µg/µL
Buffer:	0.01M TBS(pH 7.4) with 1 % BSA, 0.02 % Proclin300 and 50 % Glycerol.
Preservative:	ProClin
Precaution of Use:	This product contains ProClin: a POISONOUS AND HAZARDOUS SUBSTANCE, which should be handled by trained staff only.
Storage:	4 °C,-20 °C
Storage Comment:	Shipped at 4°C. Store at -20°C for one year. Avoid repeated freeze/thaw cycles.



Immunohistochemistry

Image 1. Formalin-fixed frozen sections of mouse hippocampus labeled with Anti-EF1 Alpha Polyclonal Antibody, Unconjugated (ABIN741210) followed by conjugation to the secondary antibody



Immunohistochemistry

Image 2. Formalin-fixed and paraffin embedded mouse embryo labeled with Anti-EF1a Polyclonal Antibody, Unconjugated (ABIN741210) at 1:200, followed by conjugation to the secondary antibody and DAB staining