



[Go to Product page](#)

Datasheet for ABIN741225
anti-ROS1 antibody (AA 2231-2347)

2 Images

Overview

Quantity:	100 µL
Target:	ROS1
Binding Specificity:	AA 2231-2347
Reactivity:	Human, Rat, Mouse
Host:	Rabbit
Clonality:	Polyclonal
Conjugate:	This ROS1 antibody is un-conjugated
Application:	Western Blotting (WB), ELISA, Immunohistochemistry (Paraffin-embedded Sections) (IHC (p)), Flow Cytometry (FACS)

Product Details

Immunogen:	KLH conjugated synthetic peptide derived from human c-Ros
Isotype:	IgG
Cross-Reactivity:	Human, Mouse, Rat
Purification:	Purified by Protein A.

Target Details

Target:	ROS1
Alternative Name:	c-Ros (ROS1 Products)
Background:	Synonyms: ROS, MCF3, c-ros-1, Proto-oncogene tyrosine-protein kinase ROS, Proto-oncogene

Target Details

c-Ros, Proto-oncogene c-Ros-1, Receptor tyrosine kinase c-ros oncogene 1, c-Ros receptor tyrosine kinase, ROS1

Background: Orphan receptor tyrosine kinase (RTK) that plays a role in epithelial cell differentiation and regionalization of the proximal epididymal epithelium. May activate several downstream signaling pathways related to cell differentiation, proliferation, growth and survival including the PI3 kinase-mTOR signaling pathway. Mediates the phosphorylation of PTPN11, an activator of this pathway. May also phosphorylate and activate the transcription factor STAT3 to control anchorage-independent cell growth. Mediates the phosphorylation and the activation of VAV3, a guanine nucleotide exchange factor regulating cell morphology. May activate other downstream signaling proteins including AKT1, MAPK1, MAPK3, IRS1 and PLCG2.

Gene ID: 6098

UniProt: [P08922](#)

Pathways: [RTK Signaling](#)

Application Details

Application Notes: WB 1:300-5000
ELISA 1:500-1000
FCM 1:20-100
IHC-P 1:200-400

Restrictions: For Research Use only

Handling

Format: Liquid

Concentration: 1 µg/µL

Buffer: 0.01M TBS(pH 7.4) with 1 % BSA, 0.02 % Proclin300 and 50 % Glycerol.

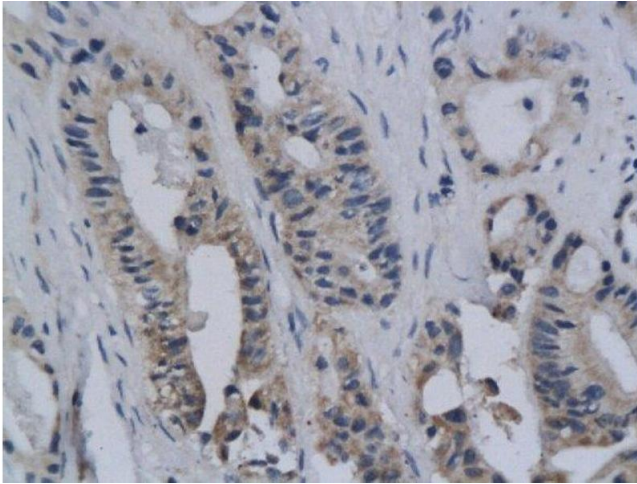
Preservative: ProClin

Precaution of Use: This product contains ProClin: a POISONOUS AND HAZARDOUS SUBSTANCE, which should be handled by trained staff only.

Storage: 4 °C,-20 °C

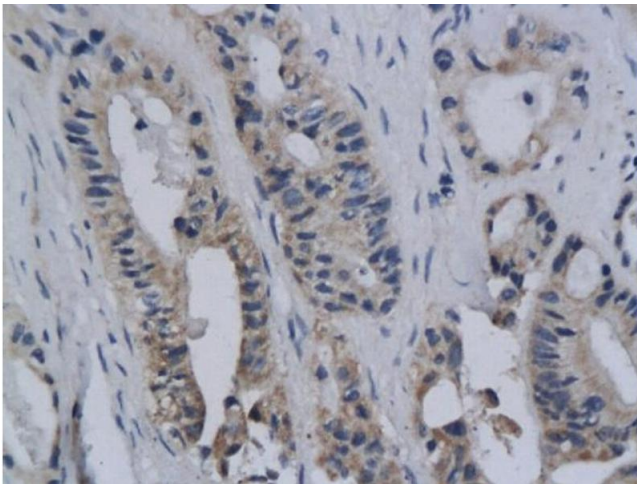
Storage Comment: Shipped at 4°C. Store at -20°C for one year. Avoid repeated freeze/thaw cycles.

Expiry Date: 12 months



Immunohistochemistry (Paraffin-embedded Sections)

Image 1. Formalin-fixed and paraffin embedded human colon cancer labeled with Anti-ROS/C ROS Polyclonal Antibody, Unconjugated followed by conjugation to the secondary antibody



Immunohistochemistry

Image 2. Formalin-fixed and paraffin embedded human colon cancer labeled with Anti-ROS/C ROS Polyclonal Antibody, Unconjugated (ABIN741225) followed by conjugation to the secondary antibody