

Datasheet for ABIN741240
anti-PKC beta antibody (pThr500)

3 Images

[Go to Product page](#)

Overview

Quantity:	100 µL
Target:	PKC beta (PRKCB)
Binding Specificity:	pThr500
Reactivity:	Human, Rat
Host:	Rabbit
Clonality:	Polyclonal
Conjugate:	This PKC beta antibody is un-conjugated
Application:	Western Blotting (WB), ELISA, Flow Cytometry (FACS), Immunohistochemistry (Paraffin-embedded Sections) (IHC (p)), Immunofluorescence (Cultured Cells) (IF (cc)), Immunofluorescence (Paraffin-embedded Sections) (IF (p)), Immunohistochemistry (Frozen Sections) (IHC (fro))

Product Details

Immunogen:	KLH conjugated synthetic peptide derived from human PRKCB around the phosphorylation site of Thr500
Isotype:	IgG
Cross-Reactivity:	Human, Rat
Predicted Reactivity:	Mouse,Cow,Horse,Chicken,Rabbit
Purification:	Purified by Protein A.

Target Details

Target:	PKC beta (PRKCB)
Alternative Name:	PRKCB (PRKCB Products)
Background:	<p>Synonyms: PKCB, PRKCB1, PRKCB2, PKC-beta, Protein kinase C beta type, PKC-B, PRKCB</p> <p>Background: Protein kinase C (PKC) is a family of serine- and threonine-specific protein kinases that can be activated by calcium and second messenger diacylglycerol. PKC family members phosphorylate a wide variety of protein targets and are known to be involved in diverse cellular signaling pathways. PKC family members also serve as major receptors for phorbol esters, a class of tumor promoters. Each member of the PKC family has a specific expression profile and is believed to play a distinct role in cells. The protein encoded by this gene is one of the PKC family members. This protein kinase has been reported to be involved in many different cellular functions, such as B cell activation, apoptosis induction, endothelial cell proliferation, and intestinal sugar absorption. Studies in mice also suggest that this kinase may also regulate neuronal functions and correlate fear-induced conflict behavior after stress. Alternatively spliced transcript variants encoding distinct isoforms have been reported. [provided by RefSeq, Jul 2008]</p>
Gene ID:	5579
UniProt:	P05771
Pathways:	WNT Signaling , TCR Signaling , Thyroid Hormone Synthesis , Nuclear Hormone Receptor Binding , Chromatin Binding , Myometrial Relaxation and Contraction , VEGF Signaling , Unfolded Protein Response , BCR Signaling

Application Details

Application Notes:	WB 1:300-5000 ELISA 1:500-1000 FCM 1:20-100 IHC-P 1:200-400 IHC-F 1:100-500 IF(IHC-P) 1:50-200 IF(IHC-F) 1:50-200 IF(ICC) 1:50-200
Restrictions:	For Research Use only

Handling

Format:	Liquid
Concentration:	1 µg/µL
Buffer:	0.01M TBS(pH 7.4) with 1 % BSA, 0.02 % Proclin300 and 50 % Glycerol.
Preservative:	ProClin
Precaution of Use:	This product contains ProClin: a POISONOUS AND HAZARDOUS SUBSTANCE, which should be handled by trained staff only.
Storage:	4 °C,-20 °C
Storage Comment:	Shipped at 4°C. Store at -20°C for one year. Avoid repeated freeze/thaw cycles.
Expiry Date:	12 months

Images

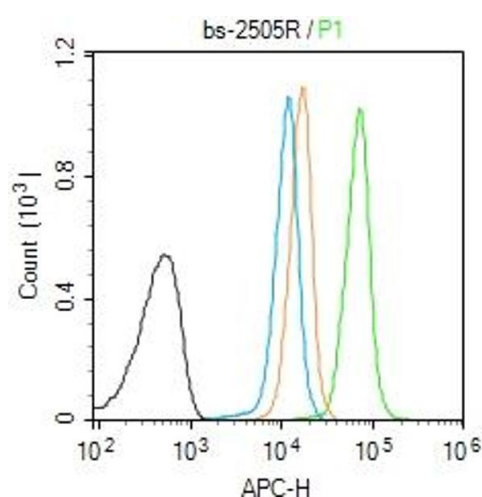
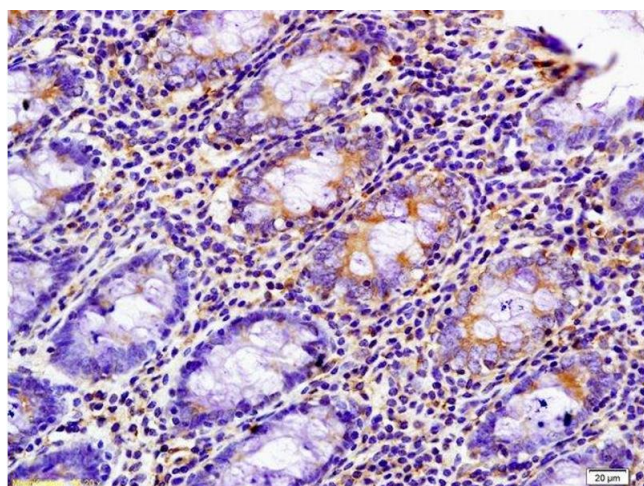
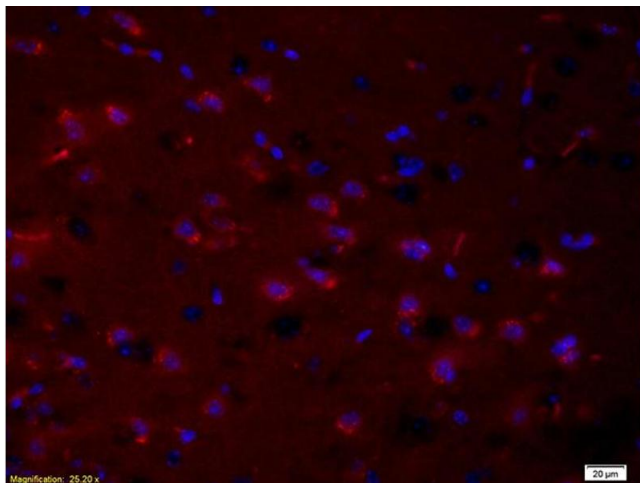


Image 1. Molt-4 cells were fixed with 4% PFA for 10min at room temperature, permeabilized with 90% ice-cold methanol for 20 min at -20°C, and incubated in 5% BSA blocking buffer for 30 min at room temperature. Cells were then stained with PKC beta 1/2 (Thr500) Antibody at 1: 50 dilution in blocking buffer and incubated for 30 min at room temperature, washed twice with 2%BSA in PBS, followed by secondary antibody incubation for 40 min at room temperature. Acquisitions of 20, 000 events were performed.



Immunohistochemistry

Image 2. Formalin-fixed and paraffin embedded human colon carcinoma labeled with Anti-phospho-PRKCZ(Thr500) Polyclonal Antibody, Unconjugated (ABIN741240) at 1:200 followed by conjugation to the secondary antibody and DAB staining



Immunofluorescence

Image 3. Formalin-fixed and paraffin embedded rat brain tissue labeled with Anti- phospho-PRKC Polyclonal Antibody, Unconjugated (ABIN741240) at 1:200 followed by conjugation to the secondary antibody Goat Anti-Rabbit IgG, PE conjugated used at 1:200 dilution for 40 minutes at 37°C and DAPI