

Datasheet for ABIN741405  
**anti-GTSE1 antibody (AA 651-739)**[Go to Product page](#)

## 2 Images

## Overview

Quantity:	100 µL
Target:	GTSE1
Binding Specificity:	AA 651-739
Reactivity:	Human, Mouse
Host:	Rabbit
Clonality:	Polyclonal
Conjugate:	This GTSE1 antibody is un-conjugated
Application:	Western Blotting (WB), ELISA, Immunofluorescence (Cultured Cells) (IF (cc)), Immunofluorescence (Paraffin-embedded Sections) (IF (p)), Immunohistochemistry (Paraffin-embedded Sections) (IHC (p)), Immunohistochemistry (Frozen Sections) (IHC (fro))

## Product Details

Immunogen:	KLH conjugated synthetic peptide derived from human GTSE1
Isotype:	IgG
Cross-Reactivity:	Human, Mouse
Predicted Reactivity:	Rat,Cow,Pig,Chicken
Purification:	Purified by Protein A.

## Target Details

Target:	GTSE1
---------	-------

## Target Details

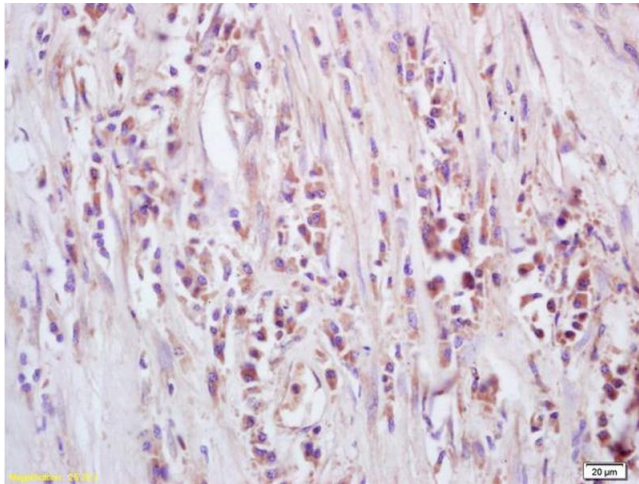
Alternative Name:	GTSE-1 ( <a href="#">GTSE1 Products</a> )
Background:	Synonyms: B99, G2 and S phase-expressed protein 1, GTSE-1, Protein B99 homolog, GTSE1 Background: May be involved in p53-induced cell cycle arrest in G2/M phase by interfering with microtubule rearrangements that are required to enter mitosis. Overexpression delays G2/M phase progression.
Gene ID:	51512
UniProt:	<a href="#">Q9NYZ3</a>

## Application Details

Application Notes:	WB 1:300-5000 ELISA 1:500-1000 IHC-P 1:200-400 IHC-F 1:100-500 IF(IHC-P) 1:50-200 IF(IHC-F) 1:50-200 IF(ICC) 1:50-200
Restrictions:	For Research Use only

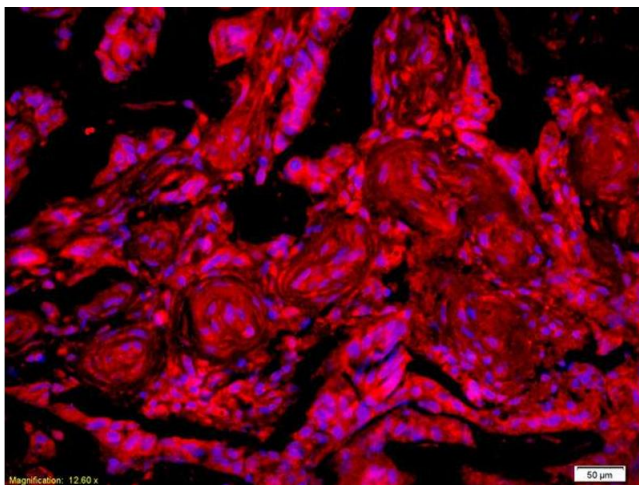
## Handling

Format:	Liquid
Concentration:	1 µg/µL
Buffer:	0.01M TBS( pH 7.4) with 1 % BSA, 0.02 % Proclin300 and 50 % Glycerol.
Preservative:	ProClin
Precaution of Use:	This product contains ProClin: a POISONOUS AND HAZARDOUS SUBSTANCE, which should be handled by trained staff only.
Storage:	4 °C,-20 °C
Storage Comment:	Shipped at 4°C. Store at -20°C for one year. Avoid repeated freeze/thaw cycles.
Expiry Date:	12 months



### Immunohistochemistry

**Image 1.** Formalin-fixed and paraffin embedded human lung carcinoma labeled with Anti-GTSE-1 Polyclonal Antibody, Unconjugated (ABIN741405) at 1:200, followed by conjugation to the secondary antibody and DAB staining



### Immunofluorescence

**Image 2.** Formalin-fixed and paraffin-embedded human rectal carcinoma labeled with Anti-GTSE-1 Polyclonal Antibody, Unconjugated (ABIN741405) 1:200, overnight at 4°C, The secondary antibody was Goat Anti-Rabbit IgG, Cy3 conjugated used at 1:200 dilution for 40 minutes at 37°C.