

Datasheet for ABIN741420
anti-CD72 antibody (AA 4-110)[Go to Product page](#)

2 Images

Overview

| | |
|----------------------|--|
| Quantity: | 100 µL |
| Target: | CD72 |
| Binding Specificity: | AA 4-110 |
| Reactivity: | Human |
| Host: | Rabbit |
| Clonality: | Polyclonal |
| Conjugate: | This CD72 antibody is un-conjugated |
| Application: | Flow Cytometry (FACS), ELISA, Immunohistochemistry (Frozen Sections) (IHC (fro)), Immunohistochemistry (Paraffin-embedded Sections) (IHC (p)), Immunofluorescence (Paraffin-embedded Sections) (IF (p)), Immunofluorescence (Cultured Cells) (IF (cc)) |

Product Details

| | |
|-----------------------|--|
| Immunogen: | KLH conjugated synthetic peptide derived from human CD72 |
| Isotype: | IgG |
| Cross-Reactivity: | Human |
| Predicted Reactivity: | Mouse,Rat,Dog,Cow |
| Purification: | Purified by Protein A. |

Target Details

| | |
|---------|------|
| Target: | CD72 |
|---------|------|

Target Details

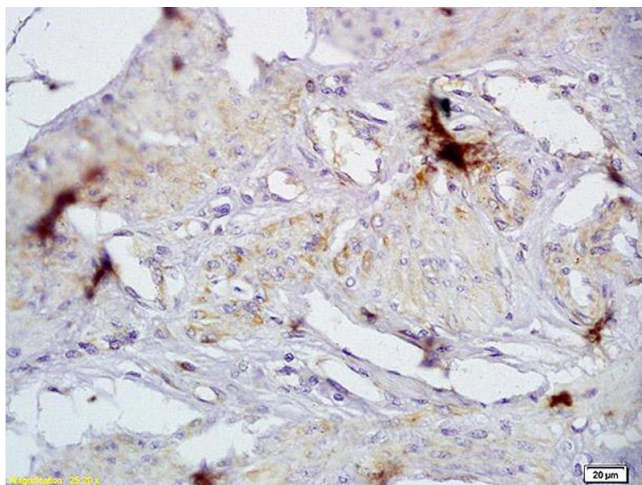
| | |
|-------------------|--|
| Alternative Name: | CD72/Ly-32 (CD72 Products) |
| Background: | <p>Synonyms: LYB2, CD72b, B-cell differentiation antigen CD72, Lyb-2, CD72</p> <p>Background: CD72 antigen is a member of the type II integral membrane glycoproteins which includes other related cell surface molecules such as the asialoglycoprotein receptors, CD23 and the Kupffer cell receptor. The function of CD72 is unknown but the exposure of B cells to CD72 activates a variety of signaling pathways and can induce MHC class II expression and B cell proliferation. CD72 antigen is expressed on all cells of B cell lineage with the exception of plasma cells and weakly on human tissue macrophages.</p> |
| Gene ID: | 971 |
| UniProt: | P21854 |
| Pathways: | BCR Signaling |

Application Details

| | |
|--------------------|---|
| Application Notes: | <p>ELISA 1:500-1000</p> <p>FCM 1:20-100</p> <p>IHC-P 1:200-400</p> <p>IHC-F 1:100-500</p> <p>IF(IHC-P) 1:50-200</p> <p>IF(IHC-F) 1:50-200</p> <p>IF(ICC) 1:50-200</p> |
| Restrictions: | For Research Use only |

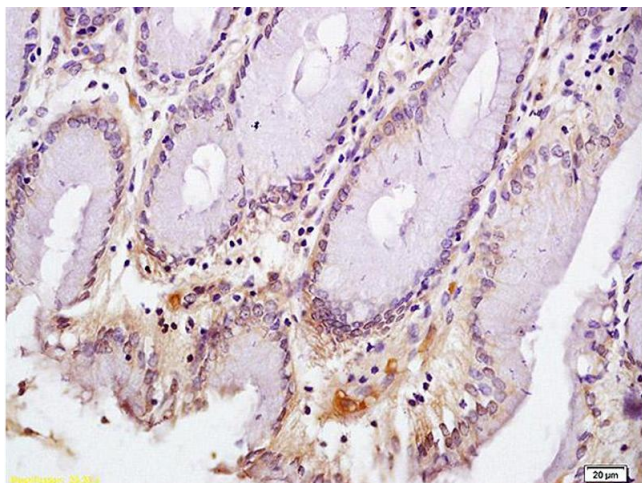
Handling

| | |
|--------------------|--|
| Format: | Liquid |
| Concentration: | 1 µg/µL |
| Buffer: | 0.01M TBS(pH 7.4) with 1 % BSA, 0.02 % Proclin300 and 50 % Glycerol. |
| Preservative: | ProClin |
| Precaution of Use: | This product contains ProClin: a POISONOUS AND HAZARDOUS SUBSTANCE, which should be handled by trained staff only. |
| Storage: | 4 °C,-20 °C |
| Storage Comment: | Shipped at 4°C. Store at -20°C for one year. Avoid repeated freeze/thaw cycles. |



Immunohistochemistry

Image 1. Formalin-fixed and paraffin embedded human cervical carcinoma labeled with Anti-CD72/Ly-32 Polyclonal Antibody, Unconjugated (ABIN741420) at 1:200 followed by conjugation to the secondary antibody and DAB staining



Immunohistochemistry

Image 2. Formalin-fixed and paraffin embedded human gastric carcinoma labeled with Anti-CD72/Ly-32 Polyclonal Antibody, Unconjugated (ABIN741420) at 1:200 followed by conjugation to the secondary antibody and DAB staining