

Datasheet for ABIN741525
anti-CD151 antibody (AA 101-200)

4 Images

[Go to Product page](#)

Overview

Quantity:	100 µL
Target:	CD151
Binding Specificity:	AA 101-200
Reactivity:	Human, Mouse
Host:	Rabbit
Clonality:	Polyclonal
Conjugate:	This CD151 antibody is un-conjugated
Application:	Western Blotting (WB), ELISA, Flow Cytometry (FACS), Immunohistochemistry (Paraffin-embedded Sections) (IHC (p)), Immunohistochemistry (Frozen Sections) (IHC (fro)), Immunofluorescence (Cultured Cells) (IF (cc)), Immunofluorescence (Paraffin-embedded Sections) (IF (p)), Immunocytochemistry (ICC)

Product Details

Immunogen:	KLH conjugated synthetic peptide derived from human CD151
Isotype:	IgG
Cross-Reactivity:	Human, Mouse
Predicted Reactivity:	Rat,Cow,Horse,Chicken
Purification:	Purified by Protein A.

Target Details

Target:	CD151
---------	-------

Target Details

Alternative Name:	CD151 (CD151 Products)
Background:	<p>Synonyms: GP27, MER2, RAPH, SFA1, PETA-3, TSPAN24, CD151 antigen, Membrane glycoprotein SFA-1, Platelet-endothelial tetraspan antigen 3, Tetraspanin-24, Tspan-24, CD151</p> <p>Background: The protein encoded by this gene is a member of the transmembrane 4 superfamily, also known as the tetraspanin family. Most of these members are cell-surface proteins that are characterized by the presence of four hydrophobic domains. The proteins mediate signal transduction events that play a role in the regulation of cell development, activation, growth and motility. This encoded protein is a cell surface glycoprotein that is known to complex with integrins and other transmembrane 4 superfamily proteins. It is involved in cellular processes including cell adhesion and may regulate integrin trafficking and/or function. This protein enhances cell motility, invasion and metastasis of cancer cells. Multiple alternatively spliced transcript variants that encode the same protein have been described for this gene. [provided by RefSeq, Jul 2008].</p>
Gene ID:	977
UniProt:	P48509

Application Details

Application Notes:	WB 1:300-5000 ELISA 1:500-1000 FCM 1:20-100 IHC-P 1:200-400 IHC-F 1:100-500 IF(IHC-P) 1:50-200 IF(IHC-F) 1:50-200 IF(ICC) 1:50-200 ICC 1:100-500
Restrictions:	For Research Use only

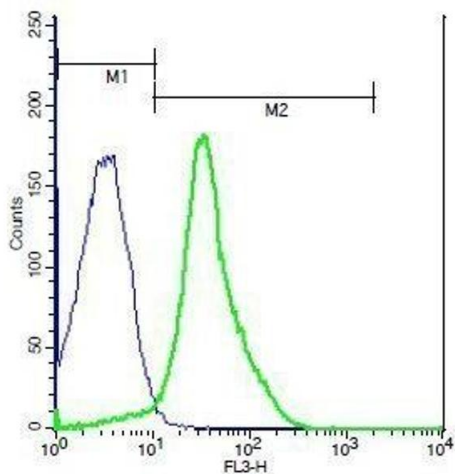
Handling

Format:	Liquid
Concentration:	1 µg/µL
Buffer:	0.01M TBS(pH 7.4) with 1 % BSA, 0.02 % Proclin300 and 50 % Glycerol.

Handling

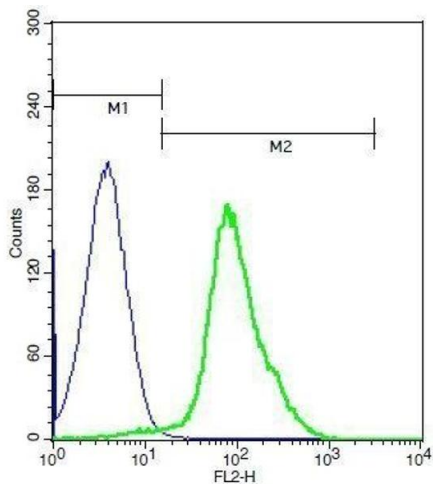
Preservative:	ProClin
Precaution of Use:	This product contains ProClin: a POISONOUS AND HAZARDOUS SUBSTANCE, which should be handled by trained staff only.
Storage:	4 °C,-20 °C
Storage Comment:	Shipped at 4°C. Store at -20°C for one year. Avoid repeated freeze/thaw cycles.
Expiry Date:	12 months

Images



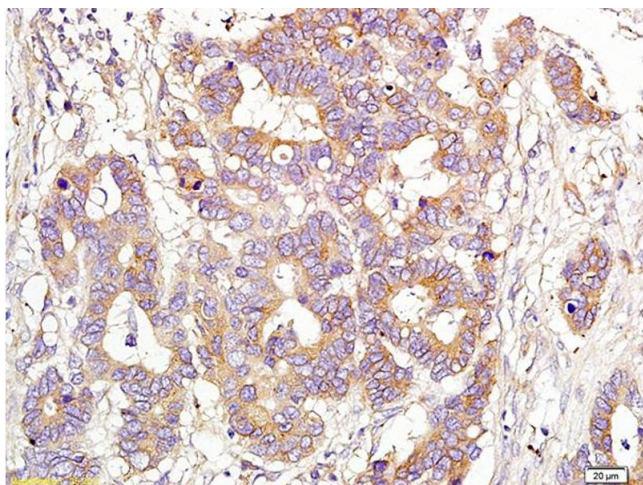
Flow Cytometry

Image 1. Mouse thymocytes probed with Rabbit Anti-CD151 Polyclonal Antibody, PE-Cy5 Conjugated .



Flow Cytometry

Image 2. Mouse thymocytes probed with Rabbit Anti-CD151 Polyclonal Antibody, Unconjugated .



Immunohistochemistry

Image 3. Formalin-fixed and paraffin embedded human colon cancer labeled with Anti-CD151/MER2/PETA-3 Polyclonal Antibody, Unconjugated (ABIN741525) at 1:200 followed by conjugation to the secondary antibody

Please check the [product details page](#) for more images. Overall 4 images are available for ABIN741525.