

Datasheet for ABIN741705
anti-SREBF2 antibody

2 Images

[Go to Product page](#)

Overview

Quantity:	100 µL
Target:	SREBF2
Reactivity:	Human, Rat, Mouse, Pig
Host:	Rabbit
Clonality:	Polyclonal
Conjugate:	This SREBF2 antibody is un-conjugated
Application:	Western Blotting (WB), Immunohistochemistry (Paraffin-embedded Sections) (IHC (p)), Immunofluorescence (Paraffin-embedded Sections) (IF (p))

Product Details

Immunogen:	KLH conjugated synthetic peptide derived from human SREBP-2
Isotype:	IgG
Cross-Reactivity:	Human, Mouse, Rat
Purification:	Purified by Protein A.

Target Details

Target:	SREBF2
Alternative Name:	SREBP-2 (SREBF2 Products)
Background:	Synonyms: Sterol Regulatory Element Binding Protein-2, MGC124823, Srebf2_retired, SREBP-2, SREBP2, SRBP2_HUMAN, Sterol regulatory element-binding protein 2, SREBP-2, Class D basic helix-loop-helix protein 2, bHLHd2, Sterol regulatory element-binding transcription factor 2,

Target Details

Processed sterol regulatory element-binding protein 2.

Background: Under basal conditions SREBP is bound to ER membranes as a glycosylated precursor protein. Upon cholesterol depletion, the protein is cleaved to its active forms (50-68 kDa) and translocated into the nucleus to stimulate transcription of genes involved in the uptake and synthesis of cholesterol. ab30682 detects both precursor and active forms of SREBP2 in tissues and cells such as liver, brown fat, testis, HepG2 cells, and human fibroblast. The apparent molecular weight on SDS-PAGE may be higher than the calculated molecular weight (about 126 kDa) due to glycosylation of the protein.

Molecular Weight: 126kDa

Gene ID: 6721

Pathways: [Regulation of Lipid Metabolism by PPARalpha](#)

Application Details

Application Notes: WB(1:100-500)
Optimal working dilution should be determined by the investigator.

Restrictions: For Research Use only

Handling

Format: Liquid

Concentration: 1 µg/µL

Buffer: Aqueous buffered solution containing 1 % BSA, 50 % glycerol and 0.09 % sodium azide.

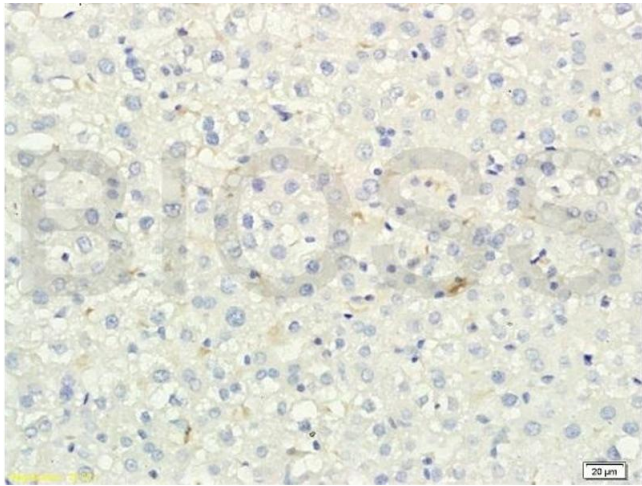
Preservative: Sodium azide

Precaution of Use: This product contains sodium azide: a POISONOUS AND HAZARDOUS SUBSTANCE which should be handled by trained staff only.

Storage: -20 °C

Storage Comment: Store at -20°C for 12 months.

Expiry Date: 12 months



Immunohistochemistry

Image 1. Formalin-fixed and paraffin embedded rat liver tissue labeled with Anti-SREBP-2 Polyclonal Antibody, Unconjugated (ABIN751258) at 1:200 followed by conjugation to the secondary antibody and DAB staining



SDS-PAGE

Image 2. L1 rat brain, L2 human colon carcinoma lysates probed (ABIN741705) at 1:200 in 4 °C. Followed by conjugation to secondary antibody at 1:3000 90min in 37 °C. Predicted and observed band size: 126kDa.