

Datasheet for ABIN741795 anti-CLEC1A antibody (AA 151-280)



[Go to Product page](#)

1 Image

Overview

Quantity:	100 µL
Target:	CLEC1A
Binding Specificity:	AA 151-280
Reactivity:	Mouse, Rat
Host:	Rabbit
Clonality:	Polyclonal
Conjugate:	This CLEC1A antibody is un-conjugated
Application:	ELISA, Western Blotting (WB), Immunofluorescence (Cultured Cells) (IF (cc)), Immunofluorescence (Paraffin-embedded Sections) (IF (p)), Immunohistochemistry (Frozen Sections) (IHC (fro)), Immunohistochemistry (Paraffin-embedded Sections) (IHC (p)), Immunocytochemistry (ICC)

Product Details

Immunogen:	KLH conjugated synthetic peptide derived from human CLEC1/CLEC1A
Isotype:	IgG
Cross-Reactivity:	Mouse, Rat
Predicted Reactivity:	Human,Dog,Cow,Pig,Horse,Rabbit,Guinea Pig
Purification:	Purified by Protein A.

Target Details

Target:	CLEC1A
---------	--------

Target Details

Alternative Name:	CLEC1/CLEC1A (CLEC1A Products)
Background:	<p>Synonyms: CLEC1, CLEC-1, C-type lectin domain family 1 member A, C-type lectin-like receptor 1, CLEC1A, UNQ569/PRO1131</p> <p>Background: This gene encodes a member of the C-type lectin/C-type lectin-like domain (CTL/CTLD) superfamily. Members of this family share a common protein fold and have diverse functions, such as cell adhesion, cell-cell signalling, glycoprotein turnover, and roles in inflammation and immune response. The encoded protein may play a role in regulating dendritic cell function. Alternative splice variants have been described but their biological nature has not been determined. This gene is closely linked to other CTL/CTLD superfamily members on chromosome 12p13 in the natural killer gene complex region. [provided by RefSeq]</p>
Gene ID:	51267
UniProt:	Q8NC01

Application Details

Application Notes:	WB 1:300-5000 ELISA 1:500-1000 IHC-P 1:200-400 IHC-F 1:100-500 IF(IHC-P) 1:50-200 IF(IHC-F) 1:50-200 IF(ICC) 1:50-200 ICC 1:100-500
Restrictions:	For Research Use only

Handling

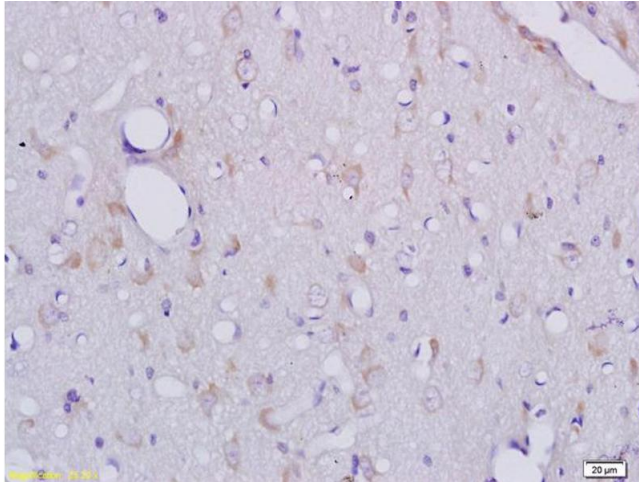
Format:	Liquid
Concentration:	1 µg/µL
Buffer:	0.01M TBS(pH 7.4) with 1 % BSA, 0.02 % Proclin300 and 50 % Glycerol.
Preservative:	ProClin
Precaution of Use:	This product contains ProClin: a POISONOUS AND HAZARDOUS SUBSTANCE, which should be handled by trained staff only.
Storage:	4 °C,-20 °C

Handling

Storage Comment: Shipped at 4°C. Store at -20°C for one year. Avoid repeated freeze/thaw cycles.

Expiry Date: 12 months

Images



Immunohistochemistry

Image 1. Formalin-fixed and paraffin embedded rat brain tissue labeled with Anti-CLEC1/CLEC1A Polyclonal Antibody, Unconjugated (ABIN741795) at 1:200 followed by conjugation to the secondary antibody and DAB staining