

Datasheet for ABIN741810

**anti-C-Type Lectin Domain Family 1, Member B (CLEC1B) (AA 1-100) antibody**[Go to Product page](#)**1** Image

## Overview

Quantity:	100 µL
Target:	C-Type Lectin Domain Family 1, Member B (CLEC1B)
Binding Specificity:	AA 1-100
Reactivity:	Human
Host:	Rabbit
Clonality:	Polyclonal
Conjugate:	Un-conjugated
Application:	ELISA, Flow Cytometry (FACS), Immunohistochemistry (Paraffin-embedded Sections) (IHC (p))

## Product Details

Immunogen:	KLH conjugated synthetic peptide derived from human CLEC1B
Isotype:	IgG
Cross-Reactivity:	Human
Predicted Reactivity:	Mouse,Rat,Cow
Purification:	Purified by Protein A.

## Target Details

Target:	C-Type Lectin Domain Family 1, Member B (CLEC1B)
Alternative Name:	CLEC1B ( <a href="#">CLEC1B Products</a> )
Target Type:	Viral Protein

## Target Details

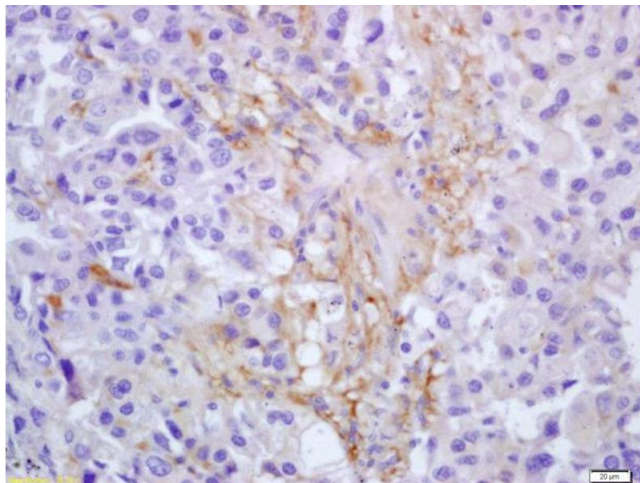
Background:	Synonyms: CLEC2, CLEC2B, PRO1384, QDED721, 1810061I13Rik, C-type lectin domain family 1 member B, C-type lectin-like receptor 2, CLEC-2, CLEC1B, UNQ721/PRO1384 Background: Natural killer (NK) cells express multiple C-type (calcium-dependent) lectin-like receptors, that interact with major histocompatibility complex class I molecules and either inhibit or activate cytotoxicity and cytokine secretion. CLEC1B (also known as CLEC-2) is a C-type lectin-like receptor expressed in myeloid cells and NK cells.
Gene ID:	51266
UniProt:	<a href="#">Q9P126</a>

## Application Details

Application Notes:	ELISA 1:500-1000 FCM 1:20-100 IHC-P 1:200-400
Restrictions:	For Research Use only

## Handling

Format:	Liquid
Concentration:	1 µg/µL
Buffer:	0.01M TBS( pH 7.4) with 1 % BSA, 0.02 % Proclin300 and 50 % Glycerol.
Preservative:	ProClin
Precaution of Use:	This product contains ProClin: a POISONOUS AND HAZARDOUS SUBSTANCE, which should be handled by trained staff only.
Storage:	4 °C,-20 °C
Storage Comment:	Shipped at 4°C. Store at -20°C for one year. Avoid repeated freeze/thaw cycles.
Expiry Date:	12 months



#### Immunohistochemistry

**Image 1.** Formalin-fixed and paraffin embedded human lung carcinoma labeled with Anti-CLEC2/CLEC1B Polyclonal Antibody, Unconjugated (ABIN741810) at 1:200 followed by conjugation to the secondary antibody and DAB staining