

Datasheet for ABIN741945
anti-CXCL11 antibody (AA 22-100)[Go to Product page](#)

2 Images

2 Publications

Overview

Quantity:	100 µL
Target:	CXCL11
Binding Specificity:	AA 22-100
Reactivity:	Mouse, Rat
Host:	Rabbit
Clonality:	Polyclonal
Conjugate:	This CXCL11 antibody is un-conjugated
Application:	ELISA, Immunofluorescence (Cultured Cells) (IF (cc)), Immunofluorescence (Paraffin-embedded Sections) (IF (p)), Immunohistochemistry (Paraffin-embedded Sections) (IHC (p)), Immunohistochemistry (Frozen Sections) (IHC (fro))

Product Details

Immunogen:	KLH conjugated synthetic peptide derived from mouse CXCL11
Isotype:	IgG
Cross-Reactivity:	Mouse, Rat
Purification:	Purified by Protein A.

Target Details

Target:	CXCL11
Alternative Name:	CXCL11 (CXCL11 Products)

Target Details

Background:	Synonyms: Ip9, H174, Itac, b-R1, Cxc11, I-tac, Scyb11, Scyb9b, betaR1, C-X-C motif chemokine 11, Interferon-inducible T-cell alpha chemoattractant, Small-inducible cytokine B11, Cxcl11 Background: Chemotactic for interleukin-activated T-cells but not unstimulated T-cells, neutrophils or monocytes. Induces calcium release in activated T-cells. Binds to CXCR3. May play an important role in CNS diseases which involve T-cell recruitment. May play a role in skin immune responses (By similarity).
Gene ID:	56066
UniProt:	Q9JHH5

Application Details

Application Notes:	ELISA 1:500-1000 IHC-P 1:200-400 IHC-F 1:100-500 IF(IHC-P) 1:50-200 IF(IHC-F) 1:50-200 IF(ICC) 1:50-200
Restrictions:	For Research Use only

Handling

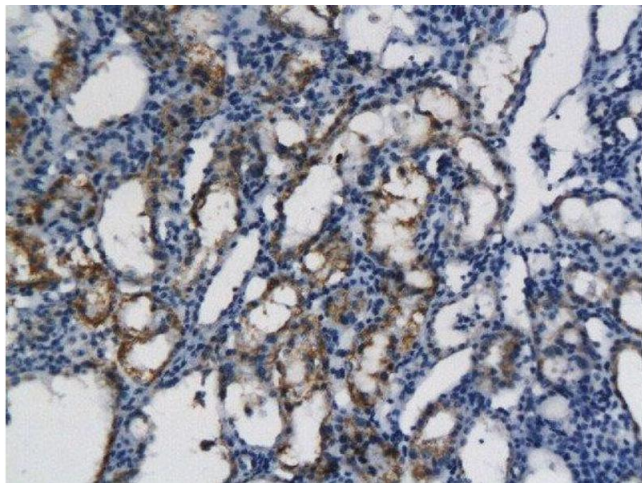
Format:	Liquid
Concentration:	1 µg/µL
Buffer:	0.01M TBS(pH 7.4) with 1 % BSA, 0.02 % Proclin300 and 50 % Glycerol.
Preservative:	ProClin
Precaution of Use:	This product contains ProClin: a POISONOUS AND HAZARDOUS SUBSTANCE, which should be handled by trained staff only.
Storage:	4 °C,-20 °C
Storage Comment:	Shipped at 4°C. Store at -20°C for one year. Avoid repeated freeze/thaw cycles.
Expiry Date:	12 months

Publications

Product cited in:	Lee, Cho, Cho, Bae, Kim, Park: "Establishment of a chronic obstructive pulmonary disease
-------------------	--

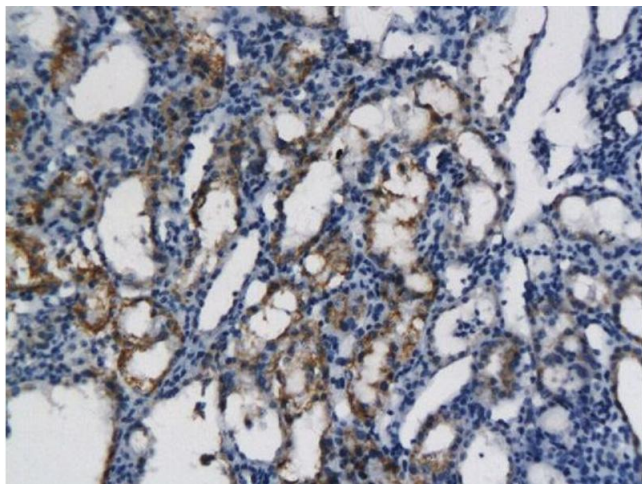
mouse model based on the elapsed time after LPS intranasal instillation." in: **Laboratory animal research**, Vol. 34, Issue 1, pp. 1-10, (2018) ([PubMed](#)).

Images



Immunohistochemistry (Paraffin-embedded Sections)

Image 1. Formalin-fixed and paraffin embedded rat kidney labeled with Anti- CXCL11 Polyclonal Antibody, Unconjugated followed by conjugation to the secondary antibody and DAB



Immunohistochemistry

Image 2. Formalin-fixed and paraffin embedded rat kidney labeled with Anti- CXCL11 Polyclonal Antibody, Unconjugated (ABIN741945) followed by conjugation to the secondary antibody and DAB