



Datasheet for ABIN742005
anti-LAMP3 antibody (AA 301-416)



[Go to Product page](#)

1 Image

Overview

Quantity:	100 µL
Target:	LAMP3
Binding Specificity:	AA 301-416
Reactivity:	Human
Host:	Rabbit
Clonality:	Polyclonal
Conjugate:	This LAMP3 antibody is un-conjugated
Application:	Western Blotting (WB), ELISA, Immunofluorescence (Cultured Cells) (IF (cc)), Immunofluorescence (Paraffin-embedded Sections) (IF (p)), Immunohistochemistry (Frozen Sections) (IHC (fro))

Product Details

Immunogen:	KLH conjugated synthetic peptide derived from human LAMP-3
Isotype:	IgG
Cross-Reactivity:	Human
Predicted Reactivity:	Mouse,Rat,Cow,Horse,Rabbit
Purification:	Purified by Protein A.

Target Details

Target:	LAMP3
---------	-------

Target Details

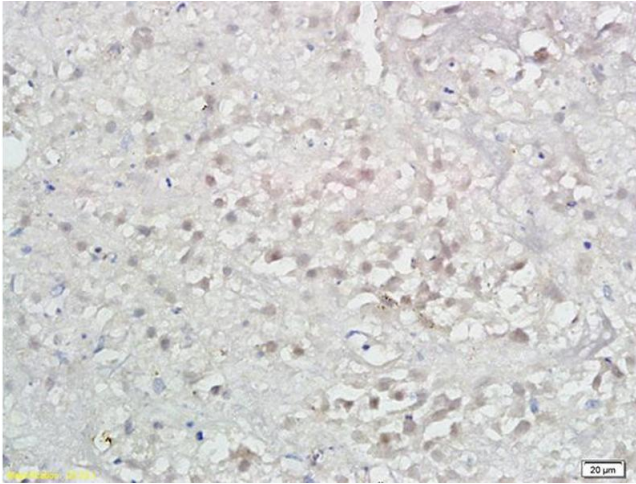
Alternative Name:	LAMP3 (LAMP3 Products)
Background:	Synonyms: LAMP, CD208, DCLAMP, LAMP-3, TSC403, DC LAMP, DC-LAMP, Lysosome-associated membrane glycoprotein 3, Lysosomal-associated membrane protein 3, DC-lysosome-associated membrane glycoprotein, Protein TSC403, LAMP3 Background: May play a role in dendritic cell function and in adaptive immunity.
Gene ID:	27074
UniProt:	Q9UQV4

Application Details

Application Notes:	WB 1:300-5000 ELISA 1:500-1000 IHC-F 1:100-500 IF(IHC-P) 1:50-200 IF(IHC-F) 1:50-200 IF(ICC) 1:50-200
Restrictions:	For Research Use only

Handling

Format:	Liquid
Concentration:	1 µg/µL
Buffer:	0.01M TBS(pH 7.4) with 1 % BSA, 0.02 % Proclin300 and 50 % Glycerol.
Preservative:	ProClin
Precaution of Use:	This product contains ProClin: a POISONOUS AND HAZARDOUS SUBSTANCE, which should be handled by trained staff only.
Storage:	4 °C,-20 °C
Storage Comment:	Shipped at 4°C. Store at -20°C for one year. Avoid repeated freeze/thaw cycles.
Expiry Date:	12 months



Immunohistochemistry

Image 1. Formalin-fixed and paraffin embedded human hepatoma labeled with Anti-LAMP-3/DC-LAMP/CD208 Polyclonal Antibody, Unconjugated (ABIN742005) at 1:300 followed by conjugation to the secondary antibody and DAB