

Datasheet for ABIN742335  
**anti-GZMA antibody (AA 101-200)**[Go to Product page](#)

## 1 Image

## Overview

Quantity:	100 µL
Target:	GZMA
Binding Specificity:	AA 101-200
Reactivity:	Human, Mouse
Host:	Rabbit
Clonality:	Polyclonal
Conjugate:	This GZMA antibody is un-conjugated
Application:	Western Blotting (WB), ELISA, Immunohistochemistry (Paraffin-embedded Sections) (IHC (p)), Immunofluorescence (Cultured Cells) (IF (cc)), Immunofluorescence (Paraffin-embedded Sections) (IF (p)), Immunohistochemistry (Frozen Sections) (IHC (fro))

## Product Details

Immunogen:	KLH conjugated synthetic peptide derived from human Granzyme A
Isotype:	IgG
Cross-Reactivity:	Human, Mouse
Predicted Reactivity:	Rat,Dog,Cow,Pig,Horse
Purification:	Purified by Protein A.

## Target Details

Target:	GZMA
---------	------

## Target Details

Alternative Name:	GZMA/Granzyme A ( <a href="#">GZMA Products</a> )
Background:	<p>Synonyms: HFSP, CTLA3, Granzyme A, CTL tryptase, Cytotoxic T-lymphocyte proteinase 1, Fragmentin-1, Granzyme-1, Hanukkah factor, H factor, HF, GZMA</p> <p>Background: Abundant protease in the cytosolic granules of cytotoxic T-cells and NK-cells which activates caspase-independent cell death with morphological features of apoptosis when delivered into the target cell through the immunological synapse. It cleaves after Lys or Arg. Cleaves APEX1 after 'Lys-31' and destroys its oxidative repair activity. Cleaves the nucleosome assembly protein SET after 'Lys-189', which disrupts its nucleosome assembly activity and allows the SET complex to translocate into the nucleus to nick and degrade the DNA.</p>
Gene ID:	3001
UniProt:	<a href="#">P12544</a>
Pathways:	<a href="#">Apoptosis</a>

## Application Details

Application Notes:	WB 1:300-5000 ELISA 1:500-1000 IHC-P 1:200-400 IHC-F 1:100-500 IF(IHC-P) 1:50-200 IF(IHC-F) 1:50-200 IF(ICC) 1:50-200
Restrictions:	For Research Use only

## Handling

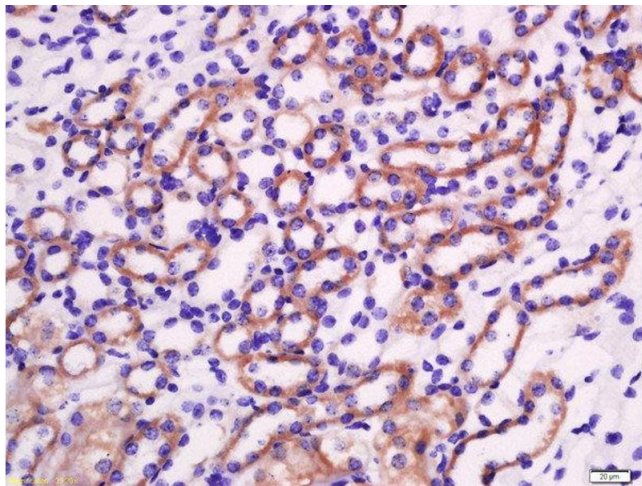
Format:	Liquid
Concentration:	1 µg/µL
Buffer:	0.01M TBS( pH 7.4) with 1 % BSA, 0.02 % Proclin300 and 50 % Glycerol.
Preservative:	ProClin
Precaution of Use:	This product contains ProClin: a POISONOUS AND HAZARDOUS SUBSTANCE, which should be handled by trained staff only.
Storage:	4 °C,-20 °C

## Handling

Storage Comment: Shipped at 4°C. Store at -20°C for one year. Avoid repeated freeze/thaw cycles.

Expiry Date: 12 months

## Images



### Immunohistochemistry (Paraffin-embedded Sections)

**Image 1.** Formalin-fixed and paraffin embedded mouse kidney labeled with Rabbit Anti-Granzyme A Polyclonal Antibody, Unconjugated at 1:200 followed by conjugation to the secondary antibody and DAB staining