

Datasheet for ABIN742455  
**anti-DDB1 antibody (AA 951-1140)**[Go to Product page](#)

## 1 Image

## Overview

Quantity:	100 µL
Target:	DDB1
Binding Specificity:	AA 951-1140
Reactivity:	Human
Host:	Rabbit
Clonality:	Polyclonal
Conjugate:	This DDB1 antibody is un-conjugated
Application:	ELISA, Immunohistochemistry (Paraffin-embedded Sections) (IHC (p)), Immunohistochemistry (Frozen Sections) (IHC (fro)), Immunofluorescence (Cultured Cells) (IF (cc)), Immunofluorescence (Paraffin-embedded Sections) (IF (p))

## Product Details

Immunogen:	KLH conjugated synthetic peptide derived from human DDB1
Isotype:	IgG
Predicted Reactivity:	Human, Mouse, Rat, Cow, Horse, Chicken, Rabbit
Purification:	Purified by Protein A.

## Target Details

Target:	DDB1
Alternative Name:	DDB1 ( <a href="#">DDB1 Products</a> )

## Target Details

Background:	<p>Synonyms: DNA damage-binding protein 1, DDB1, DDB-1, ,Damage specic DNA binding protein 1, DDB 1, DDB p127 subunit, DDBa, DNA damage binding protein 1, UV damaged DNA binding factor, UV damaged DNA binding protein 1, UV DDB 1, UV-DDB1, X associated protein 1, XAP 1, XAP1, Xeroderma pigmentosum group E complementing protein, XPCE, XPE, XPE binding factor, XPE-BF.</p> <p>Background: This gene encodes the large subunit of DNA damage-binding protein which is a heterodimer composed of a large and a small subunit. This protein functions in nucleotide-excision repair. Its defective activity causes the repair defect in the patients with xeroderma pigmentosum complementation group E (XPE). However, it remains for mutation analysis to demonstrate whether the defect in XPE patients is in this gene or the gene encoding the small subunit. In addition, Best vitelliform muscular dystrophy is mapped to the same region as this gene on 11q, but no sequence alternations of this gene are demonstrated in Best disease patients. [provided by RefSeq].</p>
Gene ID:	1642
Pathways:	<a href="#">DNA Damage Repair</a>

## Application Details

Application Notes:	<p>ELISA 1:500-1000</p> <p>IHC-P 1:200-400</p> <p>IHC-F 1:100-500</p> <p>IF(IHC-P) 1:50-200</p> <p>IF(IHC-F) 1:50-200</p> <p>IF(ICC) 1:50-200</p>
Restrictions:	For Research Use only

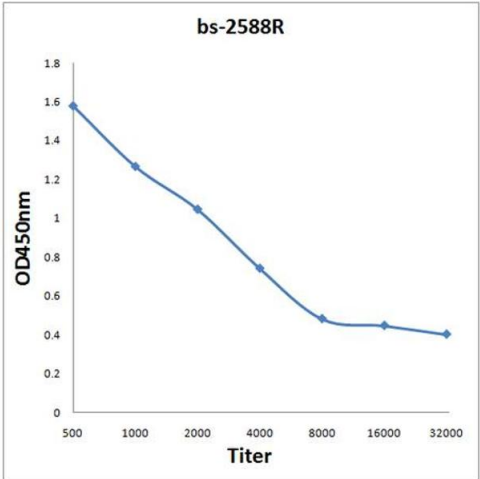
## Handling

Format:	Liquid
Concentration:	1 µg/µL
Buffer:	0.01M TBS( pH 7.4) with 1 % BSA, 0.02 % Proclin300 and 50 % Glycerol.
Preservative:	ProClin
Precaution of Use:	This product contains ProClin: a POISONOUS AND HAZARDOUS SUBSTANCE, which should be handled by trained staff only.

Handling

Storage:	4 °C,-20 °C
Storage Comment:	Shipped at 4°C. Store at -20°C for one year. Avoid repeated freeze/thaw cycles.
Expiry Date:	12 months

Images



ELISA

**Image 1.** Antigen: 0.2 µg/100 µL Primary: Antiserum, 1:500, 1:1000, 1:2000, 1:4000, 1:8000, 1:16000, 1:32000; Secondary: HRP conjugated Goat-Anti-Rabbit IgG at 1: 5000; TMB staining; Read the data in MicroplateReader by 450