

Datasheet for ABIN7425581
anti-CRP antibody (AA 20-230)[Go to Product page](#)

2 Images

Overview

Quantity:	100 µL
Target:	CRP
Binding Specificity:	AA 20-230
Reactivity:	Rat
Host:	Mouse
Clonality:	Monoclonal
Conjugate:	This CRP antibody is un-conjugated
Application:	Western Blotting (WB), Immunohistochemistry (IHC), Immunoprecipitation (IP), Immunocytochemistry (ICC)

Product Details

Purpose:	Monoclonal Antibody to C Reactive Protein (CRP)
Immunogen:	Recombinant C Reactive Protein (CRP) corresponding to His20~Ser230 with N-terminal His Tag
Clone:	D2
Isotype:	IgG1 kappa
Specificity:	The antibody is a mouse monoclonal antibody raised against CRP. It has been selected for its ability to recognize CRP in immunohistochemical staining and western blotting.
Cross-Reactivity:	Human
Purification:	Protein A + Protein G affinity chromatography

Target Details

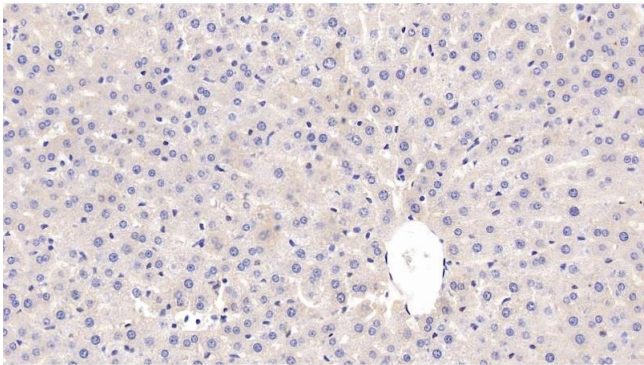
Target:	CRP
Alternative Name:	C Reactive Protein (CRP Products)
Background:	C-RP, PTX1, Pentraxin-Related, Pentraxin 1
Pathways:	Carbohydrate Homeostasis

Application Details

Application Notes:	Western blotting: 0.5-2 µg/mL 1:500-2000 Immunohistochemistry: 5-20 µg/mL 1:50-200 Immunocytochemistry: 5-20 µg/mL 1:50-200 Optimal working dilutions must be determined by end user.
Comment:	The thermal stability is described by the loss rate. The loss rate was determined by accelerated thermal degradation test, that is, incubate the protein at 37°C for 48h, and no obvious degradation and precipitation were observed. The loss rate is less than 5% within the expiration date under appropriate storage condition.
Restrictions:	For Research Use only

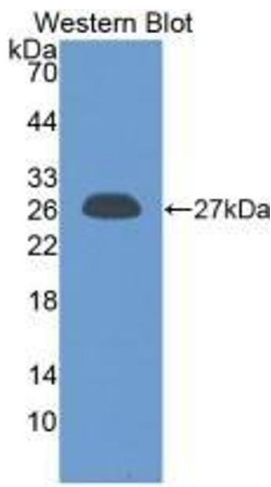
Handling

Format:	Liquid
Buffer:	PBS, pH 7.4, containing 0.02 % Sodium azide, 50 % glycerol.
Preservative:	Sodium azide
Precaution of Use:	This product contains Sodium azide: a POISONOUS AND HAZARDOUS SUBSTANCE which should be handled by trained staff only.
Storage:	4 °C, -20 °C
Storage Comment:	Store at 4°C for frequent use. Stored at -20°C in a manual defrost freezer for two year without detectable loss of activity. Avoid repeated freeze-thaw cycles.
Expiry Date:	24 months



Immunohistochemistry

Image 1. Detection of CRP in Rat Liver Tissue using Monoclonal Antibody to C Reactive Protein (CRP)



Western Blotting

Image 2. Detection of Recombinant CRP, Rat using Monoclonal Antibody to C Reactive Protein (CRP)