

Datasheet for ABIN7425632  
**anti-IGFBP1 antibody (AA 36-235)**

## 2 Images

[Go to Product page](#)

## Overview

Quantity:	100 µL
Target:	IGFBP1
Binding Specificity:	AA 36-235
Reactivity:	Human
Host:	Mouse
Clonality:	Monoclonal
Conjugate:	This IGFBP1 antibody is un-conjugated
Application:	Western Blotting (WB), Immunohistochemistry (IHC), Immunoprecipitation (IP), Immunocytochemistry (ICC)

## Product Details

Purpose:	Monoclonal Antibody to Insulin Like Growth Factor Binding Protein 1 (IGFBP1)
Immunogen:	Recombinant Insulin Like Growth Factor Binding Protein 1 (IGFBP1) corresponding to Glu36~Asn235 (Accession # P08833)
Clone:	C3
Isotype:	IgG2b kappa
Specificity:	The antibody is a mouse monoclonal antibody raised against IGFBP1. It has been selected for its ability to recognize IGFBP1 in immunohistochemical staining and western blotting.
Purification:	Protein A + Protein G affinity chromatography



## Target Details

Target:	IGFBPI
Alternative Name:	Insulin Like Growth Factor Binding Protein 1 ( <a href="#">IGFBPI Products</a> )
Background:	IBP1, AFBP, IGF-BP25, PP12, Placental Protein 12, Amniotic Fluid Binding Protein, Alpha-Pregnancy-Associated Endometrial Globulin, Growth Hormone Independent-Binding Protein
Pathways:	<a href="#">Myometrial Relaxation and Contraction</a> , <a href="#">ER-Nucleus Signaling</a> , <a href="#">Growth Factor Binding</a>

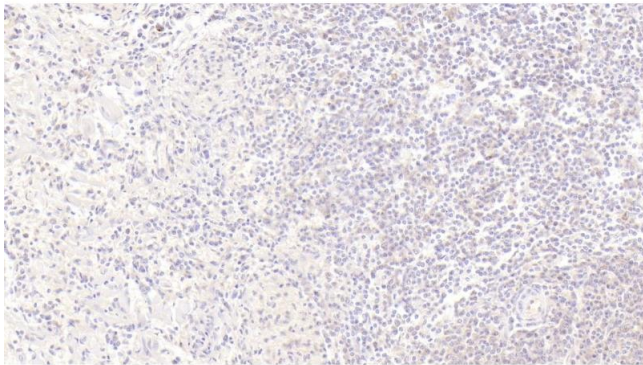
## Application Details

Application Notes:	Western blotting: 0.5-5 µg/mL Immunohistochemistry: 5-30 µg/mL Immunocytochemistry: 5-30 µg/mL Optimal working dilutions must be determined by end user.
Comment:	The thermal stability is described by the loss rate. The loss rate was determined by accelerated thermal degradation test, that is, incubate the protein at 37°C for 48h, and no obvious degradation and precipitation were observed. The loss rate is less than 5% within the expiration date under appropriate storage condition.
Restrictions:	For Research Use only

## Handling

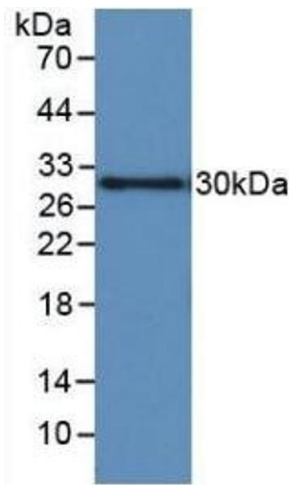
Format:	Liquid
Buffer:	0.01M PBS, pH 7.4, containing 0.05 % Proclin-300, 50 % glycerol.
Preservative:	ProClin
Precaution of Use:	This product contains ProClin: a POISONOUS AND HAZARDOUS SUBSTANCE which should be handled by trained staff only.
Storage:	4 °C, -20 °C
Storage Comment:	Store at 4°C for frequent use. Stored at -20°C in a manual defrost freezer for two year without detectable loss of activity. Avoid repeated freeze-thaw cycles.
Expiry Date:	24 months





Immunohistochemistry

**Image 1.** Detection of IGFBP1 in Human Spleen Tissue using Monoclonal Antibody to Insulin Like Growth Factor Binding Protein 1 (IGFBP1)



Western Blotting

**Image 2.** Detection of Recombinant IGFBP1, Human using Monoclonal Antibody to Insulin Like Growth Factor Binding Protein 1 (IGFBP1)