

Datasheet for ABIN7425746  
**anti-alpha 2 Antiplasmin antibody**

## 3 Images

[Go to Product page](#)

## Overview

Quantity:	100 µL
Target:	alpha 2 Antiplasmin (SERPINF2)
Reactivity:	Human
Host:	Mouse
Clonality:	Monoclonal
Conjugate:	This alpha 2 Antiplasmin antibody is un-conjugated
Application:	Western Blotting (WB), Immunohistochemistry (IHC), Immunoprecipitation (IP), Immunocytochemistry (ICC)

## Product Details

Purpose:	Monoclonal Antibody to Alpha 2-Antiplasmin (a2PI)
Immunogen:	Recombinant Alpha 2-Antiplasmin (a2PI) corresponding to N-terminal His Tag
Clone:	J15
Isotype:	IgG2a kappa
Specificity:	The antibody is a mouse monoclonal antibody raised against a2PI. It has been selected for its ability to recognize a2PI in immunohistochemical staining and western blotting.
Purification:	Protein A + Protein G affinity chromatography

## Target Details

Target:	alpha 2 Antiplasmin (SERPINF2)
---------	--------------------------------

## Target Details

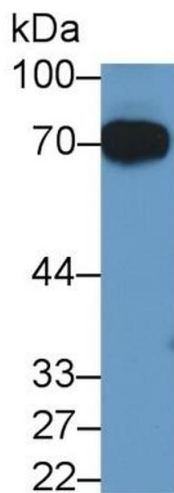
Alternative Name:	Alpha 2-Antiplasmin ( <a href="#">SERPINF2 Products</a> )
Background:	SERPINF2, AAP, A2-PI, API, PLI, A2AP, Alpha-2-Plasmin Inhibitor, Serpin Peptidase Inhibitor Clade F Member 2, Pigment Epithelium Derived Factor
Pathways:	<a href="#">Regulation of Systemic Arterial Blood Pressure by Hormones</a>

## Application Details

Application Notes:	Western blotting: 0.5-2 µg/mL Immunohistochemistry: 5-20 µg/mL Immunocytochemistry: 5-20 µg/mL Optimal working dilutions must be determined by end user.
Comment:	The thermal stability is described by the loss rate. The loss rate was determined by accelerated thermal degradation test, that is, incubate the protein at 37°C for 48h, and no obvious degradation and precipitation were observed. The loss rate is less than 5% within the expiration date under appropriate storage condition.
Restrictions:	For Research Use only

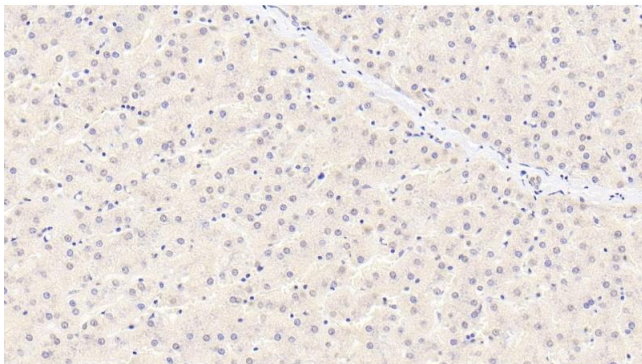
## Handling

Format:	Liquid
Buffer:	PBS, pH 7.4, containing 0.02 % Sodium azide, 50 % glycerol.
Preservative:	Sodium azide
Precaution of Use:	This product contains Sodium azide: a POISONOUS AND HAZARDOUS SUBSTANCE which should be handled by trained staff only.
Storage:	4 °C, -20 °C
Storage Comment:	Store at 4°C for frequent use. Stored at -20°C in a manual defrost freezer for two year without detectable loss of activity. Avoid repeated freeze-thaw cycles.
Expiry Date:	24 months



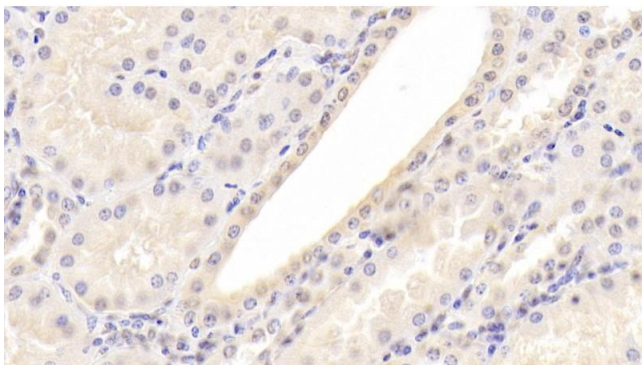
#### Western Blotting

**Image 1.** Detection of a2PI in Human Serum using Monoclonal Antibody to Alpha 2-Antiplasmin (a2PI)



#### Immunohistochemistry

**Image 2.** Detection of a2PI in Human Liver Tissue using Monoclonal Antibody to Alpha 2-Antiplasmin (a2PI)



#### Immunohistochemistry

**Image 3.** Detection of a2PI in Human Kidney Tissue using Monoclonal Antibody to Alpha 2-Antiplasmin (a2PI)