



[Go to Product page](#)

Datasheet for ABIN7425767

## anti-Adrenomedullin antibody (AA 22-147)

### 2 Images

#### Overview

Quantity:	100 µL
Target:	Adrenomedullin (ADM)
Binding Specificity:	AA 22-147
Reactivity:	Human
Host:	Mouse
Clonality:	Monoclonal
Conjugate:	This Adrenomedullin antibody is un-conjugated
Application:	Western Blotting (WB), Immunohistochemistry (IHC), Immunoprecipitation (IP), Immunocytochemistry (ICC)

#### Product Details

Purpose:	Monoclonal Antibody to Adrenomedullin (ADM)
Immunogen:	Recombinant Adrenomedullin (ADM) corresponding to Ala22~Gly147 with N-terminal His Tag
Clone:	8#
Isotype:	IgG1 kappa
Specificity:	The antibody is a mouse monoclonal antibody raised against ADM. It has been selected for its ability to recognize ADM in immunohistochemical staining and western blotting.
Purification:	Protein A + Protein G affinity chromatography

## Target Details

---

Target:	Adrenomedullin (ADM)
Alternative Name:	Adrenomedullin ( <a href="#">ADM Products</a> )
Target Type:	Hormone
Background:	AM, PAMP, Proadrenomedullin N-20 terminal peptide, ProAM N-terminal 20 peptide
Pathways:	<a href="#">Hormone Transport</a> , <a href="#">Hormone Activity</a> , <a href="#">C21-Steroid Hormone Metabolic Process</a> , <a href="#">cAMP Metabolic Process</a> , <a href="#">Myometrial Relaxation and Contraction</a> , <a href="#">Regulation of G-Protein Coupled Receptor Protein Signaling</a> , <a href="#">Tube Formation</a>

## Application Details

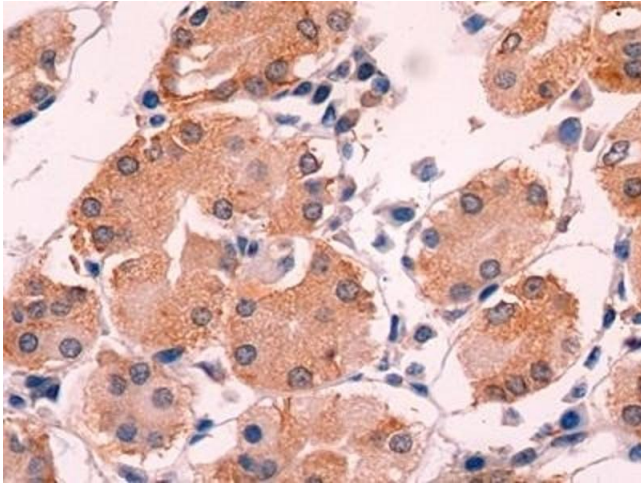
---

Application Notes:	Western blotting: 0.5-5 µg/mL Immunocytochemistry in formalin fixed cells: 5-30 µg/mL Immunohistochemistry in formalin fixed frozen section: 5-30 µg/mL Immunohistochemistry in paraffin section: 5-30 µg/mL Enzyme-linked Immunosorbent Assay: 0.05-2 µg/mL Optimal working dilutions must be determined by end user.
Comment:	The thermal stability is described by the loss rate. The loss rate was determined by accelerated thermal degradation test, that is, incubate the protein at 37°C for 48h, and no obvious degradation and precipitation were observed. The loss rate is less than 5% within the expiration date under appropriate storage condition.
Restrictions:	For Research Use only

## Handling

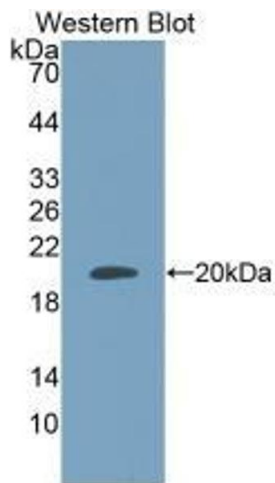
---

Format:	Liquid
Buffer:	0.01M PBS, pH 7.4, containing 0.05 % Proclin-300, 50 % glycerol.
Preservative:	ProClin
Precaution of Use:	This product contains ProClin: a POISONOUS AND HAZARDOUS SUBSTANCE which should be handled by trained staff only.
Storage:	4 °C,-20 °C
Storage Comment:	Store at 4°C for frequent use. Stored at -20°C in a manual defrost freezer for two year without detectable loss of activity. Avoid repeated freeze-thaw cycles.
Expiry Date:	24 months



### Immunohistochemistry

**Image 1.** Detection of ADM in Human Stomach Tissue using Monoclonal Antibody to Adrenomedullin (ADM)



### Western Blotting

**Image 2.** Detection of Recombinant ADM, Human using Monoclonal Antibody to Adrenomedullin (ADM)