

Datasheet for ABIN7425779
anti-PPIB antibody (AA 47-216)[Go to Product page](#)

3 Images

Overview

Quantity:	100 µL
Target:	PPIB
Binding Specificity:	AA 47-216
Reactivity:	Human
Host:	Mouse
Clonality:	Monoclonal
Conjugate:	This PPIB antibody is un-conjugated
Application:	Western Blotting (WB), Immunohistochemistry (IHC), Immunoprecipitation (IP), Immunocytochemistry (ICC)

Product Details

Purpose:	Monoclonal Antibody to Cyclophilin B (CYPB)
Immunogen:	Recombinant Cyclophilin B (CYPB) corresponding to Tyr47~Glu216 with N-terminal His Tag
Clone:	C1
Isotype:	IgG1 kappa
Specificity:	The antibody is a mouse monoclonal antibody raised against CYPB. It has been selected for its ability to recognize CYPB in immunohistochemical staining and western blotting.
Cross-Reactivity:	Pig, Rat
Purification:	Protein A + Protein G affinity chromatography

Target Details

Target:	PPIB
Alternative Name:	Cyclophilin B (PPIB Products)
Background:	PPIB, PPI-B, CYP-S1, CyP-B, SCYLP, PPIase B, Rotamase B, S-cyclophilin, Peptidylprolyl Isomerase B, Peptidyl-Prolyl Cis-Trans Isomerase B

Application Details

Application Notes:	Western blotting: 0.02-1 µg/mL Immunohistochemistry: 5-20 µg/mL Immunocytochemistry: 5-20 µg/mL Optimal working dilutions must be determined by end user.
Comment:	The thermal stability is described by the loss rate. The loss rate was determined by accelerated thermal degradation test, that is, incubate the protein at 37°C for 48h, and no obvious degradation and precipitation were observed. The loss rate is less than 5% within the expiration date under appropriate storage condition.
Restrictions:	For Research Use only

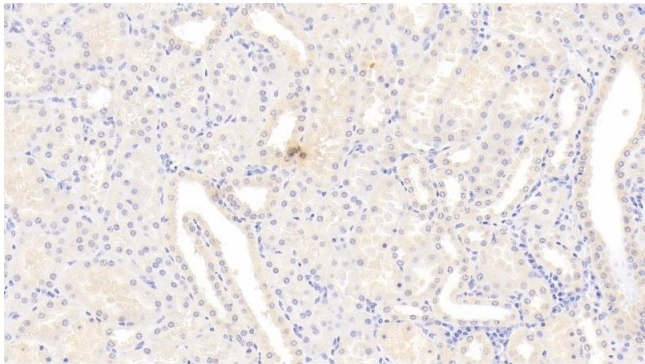
Handling

Format:	Liquid
Buffer:	PBS, pH 7.4, containing 0.02 % Sodium azide, 50 % glycerol.
Preservative:	Sodium azide
Precaution of Use:	This product contains Sodium azide: a POISONOUS AND HAZARDOUS SUBSTANCE which should be handled by trained staff only.
Storage:	4 °C, -20 °C
Storage Comment:	Store at 4°C for frequent use. Stored at -20°C in a manual defrost freezer for two year without detectable loss of activity. Avoid repeated freeze-thaw cycles.
Expiry Date:	24 months



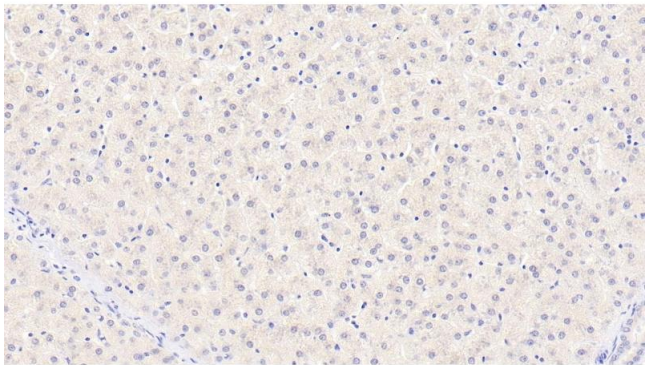
Western Blotting

Image 1. Detection of CYPB in Rat Prostate lysate using Monoclonal Antibody to Cyclophilin B (CYPB)



Immunohistochemistry

Image 2. Detection of CYPB in Human Kidney Tissue using Monoclonal Antibody to Cyclophilin B (CYPB)



Immunohistochemistry

Image 3. Detection of CYPB in Human Liver Tissue using Monoclonal Antibody to Cyclophilin B (CYPB)