



[Go to Product page](#)

Datasheet for ABIN7425860

anti-PKC epsilon antibody (AA 403-672)

3 Images

Overview

Quantity:	100 µL
Target:	PKC epsilon (PRKCE)
Binding Specificity:	AA 403-672
Reactivity:	Human
Host:	Mouse
Clonality:	Monoclonal
Conjugate:	This PKC epsilon antibody is un-conjugated
Application:	Western Blotting (WB), Immunohistochemistry (IHC), Immunoprecipitation (IP), Immunocytochemistry (ICC)

Product Details

Purpose:	Monoclonal Antibody to Protein Kinase C Epsilon (PKCe)
Immunogen:	Recombinant Protein Kinase C Epsilon (PKCe) corresponding to Leu403~Asp672 with N-terminal His Tag
Isotype:	IgG
Specificity:	The antibody is a mouse monoclonal antibody raised against PKCe. It has been selected for its ability to recognize PKCe in immunohistochemical staining and western blotting.
Cross-Reactivity:	Mouse, Pig
Purification:	Protein A + Protein G affinity chromatography

Target Details

Target:	PKC epsilon (PRKCE)
Alternative Name:	Protein Kinase C Epsilon (PRKCE Products)
Background:	PKC-E, PRKCE, PRKC-E, NPKC-Epsilon
Pathways:	TCR Signaling , EGFR Signaling Pathway , Neurotrophin Signaling Pathway , Positive Regulation of Peptide Hormone Secretion , Activation of Innate immune Response , Cellular Response to Molecule of Bacterial Origin , Regulation of Actin Filament Polymerization , Myometrial Relaxation and Contraction , Regulation of Carbohydrate Metabolic Process , Interaction of EGFR with phospholipase C-gamma , Thromboxane A2 Receptor Signaling

Application Details

Application Notes:	Western blotting: 0.2-2 µg/mL 1:500-5000 Immunohistochemistry: 5-20 µg/mL 1:50-200 Immunocytochemistry: 5-20 µg/mL 1:50-200 Optimal working dilutions must be determined by end user.
Comment:	The thermal stability is described by the loss rate. The loss rate was determined by accelerated thermal degradation test, that is, incubate the protein at 37°C for 48h, and no obvious degradation and precipitation were observed. The loss rate is less than 5% within the expiration date under appropriate storage condition.
Restrictions:	For Research Use only

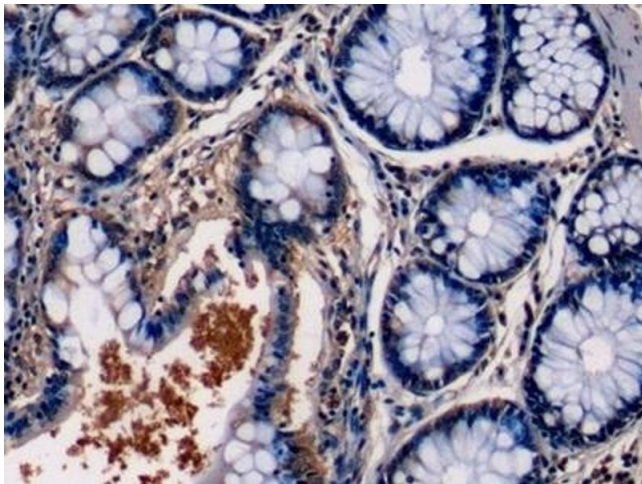
Handling

Format:	Liquid
Buffer:	PBS, pH 7.4, containing 0.02 % Sodium azide, 50 % glycerol.
Preservative:	Sodium azide
Precaution of Use:	This product contains Sodium azide: a POISONOUS AND HAZARDOUS SUBSTANCE which should be handled by trained staff only.
Storage:	4 °C,-20 °C
Storage Comment:	Store at 4°C for frequent use. Stored at -20°C in a manual defrost freezer for two year without detectable loss of activity. Avoid repeated freeze-thaw cycles.
Expiry Date:	24 months



Western Blotting

Image 1. Detection of PKCe in Mouse Cerebrum lysate using Monoclonal Antibody to Protein Kinase C Epsilon (PKCe)



Immunohistochemistry

Image 2. Detection of PKCe in Human Colon Tissue using Monoclonal Antibody to Protein Kinase C Epsilon (PKCe)



Western Blotting

Image 3. Detection of PKCe in Porcine Cerebrum lysate using Monoclonal Antibody to Protein Kinase C Epsilon (PKCe)