

Datasheet for ABIN7425947
anti-S100B antibody (AA 1-92)



[Go to Product page](#)

2 Images

Overview

| | |
|----------------------|--|
| Quantity: | 100 µL |
| Target: | S100B |
| Binding Specificity: | AA 1-92 |
| Reactivity: | Human |
| Host: | Mouse |
| Clonality: | Monoclonal |
| Conjugate: | This S100B antibody is un-conjugated |
| Application: | Western Blotting (WB), Immunohistochemistry (IHC), Immunoprecipitation (IP), Immunocytochemistry (ICC) |

Product Details

| | |
|-------------------|---|
| Purpose: | Monoclonal Antibody to S100 Calcium Binding Protein B (S100B) |
| Immunogen: | Recombinant S100 Calcium Binding Protein B (S100B) corresponding to Met1~Glu92 with N-terminal His Tag |
| Clone: | D5 |
| Isotype: | IgG |
| Specificity: | The antibody is a mouse monoclonal antibody raised against S100B. It has been selected for its ability to recognize S100B in immunohistochemical staining and western blotting. |
| Cross-Reactivity: | Rat |
| Purification: | Protein A + Protein G affinity chromatography |

Target Details

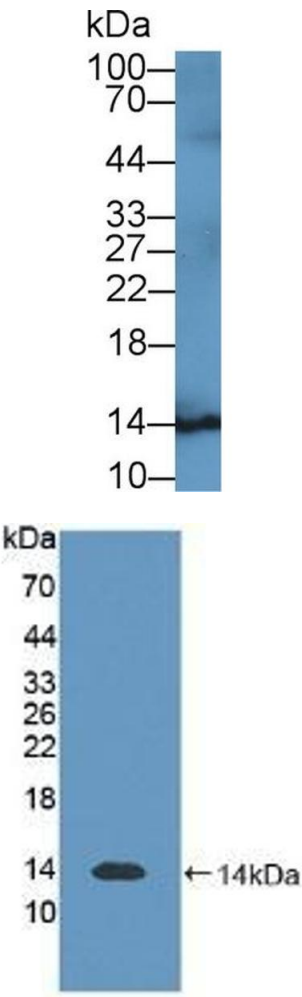
| | |
|-------------------|--|
| Target: | S100B |
| Alternative Name: | S100B (S100B Products) |
| Background: | S100-B, NEF, S100Beta, S-100 protein subunit beta |
| UniProt: | P04271 |
| Pathways: | Regulation of Muscle Cell Differentiation , Positive Regulation of Immune Effector Process , Toll-Like Receptors Cascades , Regulation of long-term Neuronal Synaptic Plasticity , S100 Proteins |

Application Details

| | |
|--------------------|---|
| Application Notes: | Western blotting: 0.01-2 µg/mL, Immunohistochemistry: 5-20 µg/mL, Immunocytochemistry: 5-20 µg/mL, Optimal working dilutions must be determined by end user. |
| Comment: | The thermal stability is described by the loss rate. The loss rate was determined by accelerated thermal degradation test, that is, incubate the protein at 37°C for 48h, and no obvious degradation and precipitation were observed. The loss rate is less than 5% within the expiration date under appropriate storage condition. |
| Restrictions: | For Research Use only |

Handling

| | |
|--------------------|---|
| Format: | Liquid |
| Concentration: | 1 mg/mL |
| Buffer: | PBS, pH 7.4, containing 0.02 % Sodium azide, 50 % glycerol. |
| Preservative: | Sodium azide |
| Precaution of Use: | This product contains Sodium azide: a POISONOUS AND HAZARDOUS SUBSTANCE which should be handled by trained staff only. |
| Storage: | 4 °C, -20 °C |
| Storage Comment: | Store at 4°C for frequent use. Stored at -20°C in a manual defrost freezer for two year without detectable loss of activity. Avoid repeated freeze-thaw cycles. |
| Expiry Date: | 24 months |



Western Blotting

Image 1. Detection of S100B in Rat Cerebrum lysate using Monoclonal Antibody to S100 Calcium Binding Protein B (S100B)

Western Blotting

Image 2. Detection of Recombinant S100B, Human using Monoclonal Antibody to S100 Calcium Binding Protein B (S100B)