

Datasheet for ABIN7425980
anti-C1QBP antibody (AA 76-282)

5 Images

[Go to Product page](#)

Overview

| | |
|----------------------|--|
| Quantity: | 100 µL |
| Target: | C1QBP |
| Binding Specificity: | AA 76-282 |
| Reactivity: | Human |
| Host: | Mouse |
| Clonality: | Monoclonal |
| Conjugate: | This C1QBP antibody is un-conjugated |
| Application: | Western Blotting (WB), Immunohistochemistry (IHC), Immunoprecipitation (IP), Immunocytochemistry (ICC) |

Product Details

| | |
|-------------------|---|
| Purpose: | Monoclonal Antibody to Complement component 1 Q subcomponent-binding protein, mitochondrial (C1QBP) |
| Immunogen: | Recombinant Complement component 1 Q subcomponent-binding protein, mitochondrial (C1QBP) corresponding to Thr76~Gln282 with N-terminal His Tag |
| Clone: | C3 |
| Isotype: | IgG2a kappa |
| Specificity: | The antibody is a mouse monoclonal antibody raised against C1QBP. It has been selected for its ability to recognize C1QBP in immunohistochemical staining and western blotting. |
| Cross-Reactivity: | Rat |

Product Details

Purification: Protein A + Protein G affinity chromatography

Target Details

Target: C1QBP

Alternative Name: Complement component 1 Q subcomponent-binding protein, mitochondrial ([C1QBP Products](#))

Background: HABP1, GC1QBP, SF2p32, GC1Q-R, GC1qR, P32, Hyaluronan Binding Protein 1, Splicing Factor SF2-Associated Protein, ASF/SF2-associated p32

Pathways: [Ribonucleoprotein Complex Subunit Organization](#), [Ribosome Assembly](#)

Application Details

Application Notes: Western blotting: 0.5-2 µg/mL
1:500-2000 Immunohistochemistry: 5-20 µg/mL
1:50-200 Immunocytochemistry: 5-20 µg/mL
1:50-200 Optimal working dilutions must be determined by end user.

Comment: The thermal stability is described by the loss rate. The loss rate was determined by accelerated thermal degradation test, that is, incubate the protein at 37°C for 48h, and no obvious degradation and precipitation were observed. The loss rate is less than 5% within the expiration date under appropriate storage condition.

Restrictions: For Research Use only

Handling

Format: Liquid

Buffer: 0.01M PBS, pH 7.4, containing 0.05 % Proclin-300, 50 % glycerol.

Preservative: ProClin

Precaution of Use: This product contains ProClin: a POISONOUS AND HAZARDOUS SUBSTANCE which should be handled by trained staff only.

Storage: 4 °C, -20 °C

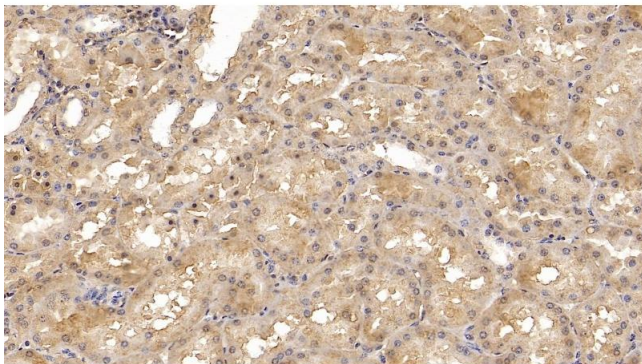
Storage Comment: Store at 4°C for frequent use. Stored at -20°C in a manual defrost freezer for two year without detectable loss of activity. Avoid repeated freeze-thaw cycles.

Expiry Date: 24 months



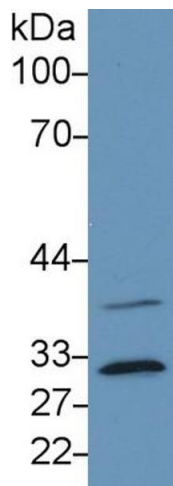
Western Blotting

Image 1. Detection of C1QBP in Human K562 cell lysate using Monoclonal Antibody to Complement component 1 Q subcomponent-binding protein, mitochondrial (C1QBP)



Immunohistochemistry

Image 2. Detection of C1QBP in Human Kidney Tissue using Monoclonal Antibody to Complement component 1 Q subcomponent-binding protein, mitochondrial (C1QBP)



Western Blotting

Image 3. Detection of C1QBP in Human Hela cell lysate using Monoclonal Antibody to Complement component 1 Q subcomponent-binding protein, mitochondrial (C1QBP)

Please check the [product details page](#) for more images. Overall 5 images are available for ABIN7425980.