

Datasheet for ABIN7426025  
**anti-EGFR antibody (AA 888-1210)**

## 6 Images

[Go to Product page](#)

## Overview

Quantity:	100 µL
Target:	EGFR
Binding Specificity:	AA 888-1210
Reactivity:	Human
Host:	Mouse
Clonality:	Monoclonal
Conjugate:	This EGFR antibody is un-conjugated
Application:	Western Blotting (WB), Immunohistochemistry (IHC), Immunoprecipitation (IP), Immunocytochemistry (ICC)

## Product Details

Purpose:	Monoclonal Antibody to Epidermal Growth Factor Receptor (EGFR)
Immunogen:	Recombinant Epidermal Growth Factor Receptor (EGFR) corresponding to His888~Ala1210 with N-terminal His Tag
Clone:	C4
Isotype:	IgG2b kappa
Specificity:	The antibody is a mouse monoclonal antibody raised against EGFR. It has been selected for its ability to recognize EGFR in immunohistochemical staining and western blotting.
Cross-Reactivity:	Mouse
Purification:	Protein A + Protein G affinity chromatography

## Target Details

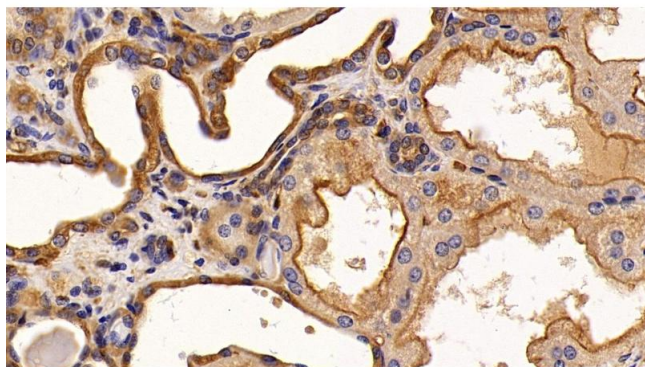
Target:	EGFR
Alternative Name:	Epidermal Growth Factor Receptor ( <a href="#">EGFR Products</a> )
Background:	ErbB-1, ErbB1, ER1, ERB-B1, MENA, HER1, Erythroblastic Leukemia Viral(v-Erb-B)oncogene Homolog,Avian, Proto-oncogene c-ErbB-1, Receptor tyrosine-protein kinase erbB-1
Pathways:	<a href="#">NF-kappaB Signaling</a> , <a href="#">RTK Signaling</a> , <a href="#">Fc-epsilon Receptor Signaling Pathway</a> , <a href="#">EGFR Signaling Pathway</a> , <a href="#">Neurotrophin Signaling Pathway</a> , <a href="#">Stem Cell Maintenance</a> , <a href="#">Hepatitis C</a> , <a href="#">Positive Regulation of Response to DNA Damage Stimulus</a> , <a href="#">Interaction of EGFR with phospholipase C-gamma</a> , <a href="#">Thromboxane A2 Receptor Signaling</a> , <a href="#">EGFR Downregulation</a> , <a href="#">S100 Proteins</a>

## Application Details

Application Notes:	Western blotting: 0.5-5 µg/mL Immunohistochemistry: 5-50 µg/mL Immunocytochemistry: 5-50 µg/mL Optimal working dilutions must be determined by end user.
Comment:	The thermal stability is described by the loss rate. The loss rate was determined by accelerated thermal degradation test, that is, incubate the protein at 37°C for 48h, and no obvious degradation and precipitation were observed. The loss rate is less than 5% within the expiration date under appropriate storage condition.
Restrictions:	For Research Use only

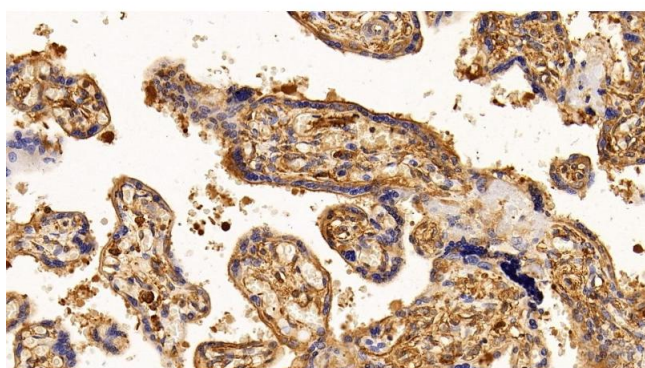
## Handling

Format:	Liquid
Buffer:	0.01M PBS, pH 7.4, containing 0.05 % Proclin-300, 50 % glycerol.
Preservative:	ProClin
Precaution of Use:	This product contains ProClin: a POISONOUS AND HAZARDOUS SUBSTANCE which should be handled by trained staff only.
Storage:	4 °C,-20 °C
Storage Comment:	Store at 4°C for frequent use. Stored at -20°C in a manual defrost freezer for two year without detectable loss of activity. Avoid repeated freeze-thaw cycles.
Expiry Date:	24 months



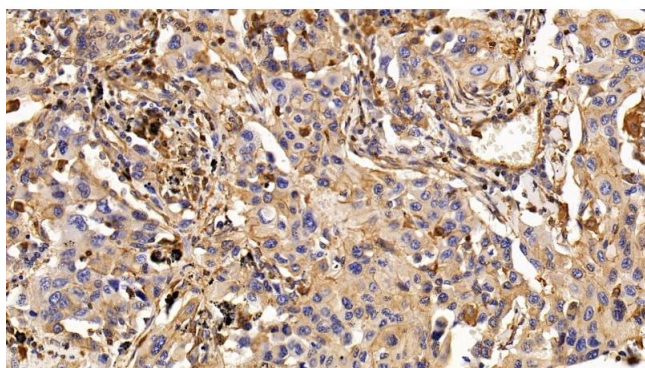
#### Immunohistochemistry

**Image 1.** Detection of EGFR in Human Kidney Tissue using Monoclonal Antibody to Epidermal Growth Factor Receptor (EGFR)



#### Immunohistochemistry

**Image 2.** Detection of EGFR in Human Placenta Tissue using Monoclonal Antibody to Epidermal Growth Factor Receptor (EGFR)



#### Immunohistochemistry

**Image 3.** Detection of EGFR in Human Lung cancer Tissue using Monoclonal Antibody to Epidermal Growth Factor Receptor (EGFR)

Please check the [product details page](#) for more images. Overall 6 images are available for ABIN7426025.