

Datasheet for ABIN7426028
anti-Bcl-2 antibody (AA 2-211)

5 Images

[Go to Product page](#)

Overview

Quantity:	100 µL
Target:	Bcl-2 (BCL2)
Binding Specificity:	AA 2-211
Reactivity:	Human
Host:	Mouse
Clonality:	Monoclonal
Conjugate:	This Bcl-2 antibody is un-conjugated
Application:	Western Blotting (WB), Immunohistochemistry (IHC), Immunoprecipitation (IP), Immunocytochemistry (ICC)

Product Details

Purpose:	Monoclonal Antibody to B-Cell Leukemia/Lymphoma 2 (Bcl2)
Immunogen:	Recombinant B-Cell Leukemia/Lymphoma 2 (Bcl2) corresponding to Ala2~Asp211 with N-terminal His Tag
Clone:	D1
Isotype:	IgG1 kappa
Specificity:	The antibody is a mouse monoclonal antibody raised against Bcl2. It has been selected for its ability to recognize Bcl2 in immunohistochemical staining and western blotting.
Cross-Reactivity:	Pig
Purification:	Protein A + Protein G affinity chromatography

Target Details

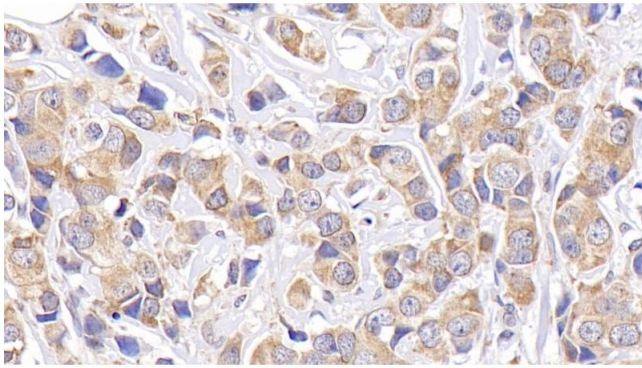
Target:	Bcl-2 (BCL2)
Alternative Name:	B-Cell Leukemia/Lymphoma 2 (BCL2 Products)
Background:	B-Cell CLL/Lymphoma 2
Pathways:	MAPK Signaling , PI3K-Akt Signaling , Apoptosis , Caspase Cascade in Apoptosis , Regulation of Muscle Cell Differentiation , Cell-Cell Junction Organization , Skeletal Muscle Fiber Development , Autophagy , Smooth Muscle Cell Migration , Negative Regulation of intrinsic apoptotic Signaling

Application Details

Application Notes:	Western blotting: 0.5-2 µg/mL Immunohistochemistry: 5-20 µg/mL Immunocytochemistry: 5-20 µg/mL Optimal working dilutions must be determined by end user.
Comment:	The thermal stability is described by the loss rate. The loss rate was determined by accelerated thermal degradation test, that is, incubate the protein at 37°C for 48h, and no obvious degradation and precipitation were observed. The loss rate is less than 5% within the expiration date under appropriate storage condition.
Restrictions:	For Research Use only

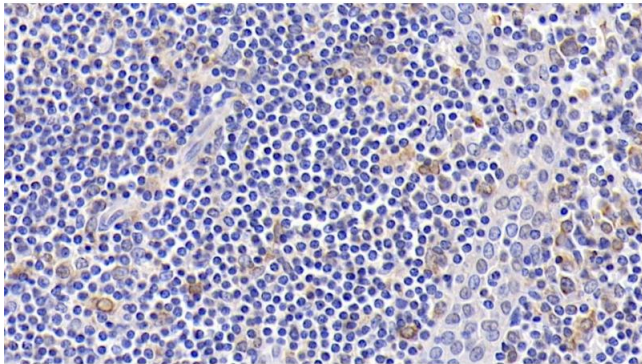
Handling

Format:	Liquid
Buffer:	PBS, pH 7.4, containing 0.02 % Sodium azide, 50 % glycerol.
Preservative:	Sodium azide
Precaution of Use:	This product contains Sodium azide: a POISONOUS AND HAZARDOUS SUBSTANCE which should be handled by trained staff only.
Storage:	4 °C, -20 °C
Storage Comment:	Store at 4°C for frequent use. Stored at -20°C in a manual defrost freezer for two year without detectable loss of activity. Avoid repeated freeze-thaw cycles.
Expiry Date:	24 months



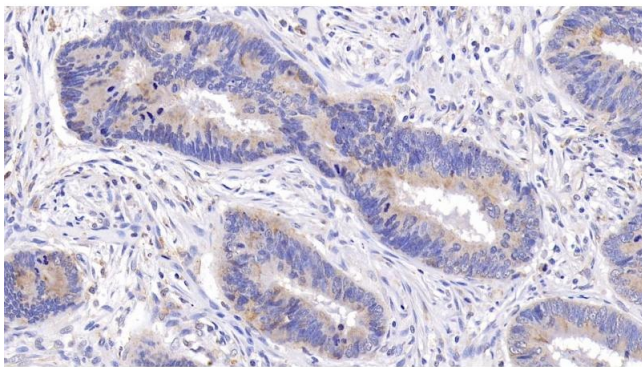
Immunohistochemistry

Image 1. Detection of Bcl2 in Human Breast cancer Tissue using Monoclonal Antibody to B-Cell Leukemia/Lymphoma 2 (Bcl2)



Immunohistochemistry

Image 2. Detection of Bcl2 in Human Amygdalitis Tissue using Monoclonal Antibody to B-Cell Leukemia/Lymphoma 2 (Bcl2)



Immunohistochemistry

Image 3. Detection of Bcl2 in Human Colorectal cancer Tissue using Monoclonal Antibody to B-Cell Leukemia/Lymphoma 2 (Bcl2)

Please check the [product details page](#) for more images. Overall 5 images are available for ABIN7426028.