

Datasheet for ABIN7426082  
**anti-Prolactin antibody (AA 29-227)**[Go to Product page](#)

## 3 Images

## Overview

Quantity:	100 µL
Target:	Prolactin (PRL)
Binding Specificity:	AA 29-227
Reactivity:	Human
Host:	Mouse
Clonality:	Monoclonal
Conjugate:	This Prolactin antibody is un-conjugated
Application:	Western Blotting (WB), Immunohistochemistry (IHC), Immunoprecipitation (IP), Immunocytochemistry (ICC)

## Product Details

Purpose:	Monoclonal Antibody to Prolactin (PRL)
Immunogen:	Recombinant Prolactin (PRL) corresponding to Leu29~Cys227 with N-terminal His Tag
Clone:	C13
Isotype:	IgG2b kappa
Specificity:	The antibody is a mouse monoclonal antibody raised against PRL. It has been selected for its ability to recognize PRL in immunohistochemical staining and western blotting.
Cross-Reactivity:	Rat
Purification:	Protein A + Protein G affinity chromatography

## Target Details

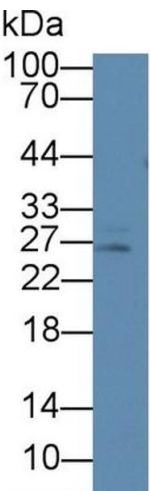
Target:	Prolactin (PRL)
Alternative Name:	Prolactin ( <a href="#">PRL Products</a> )
Background:	LTH, Luteotropic Hormone
Pathways:	<a href="#">JAK-STAT Signaling</a> , <a href="#">Peptide Hormone Metabolism</a> , <a href="#">Response to Growth Hormone Stimulus</a> , <a href="#">Protein targeting to Nucleus</a>

## Application Details

Application Notes:	Western blotting: 0.5-2 µg/mL Immunohistochemistry: 5-20 µg/mL Immunocytochemistry: 5-20 µg/mL Optimal working dilutions must be determined by end user.
Comment:	The thermal stability is described by the loss rate. The loss rate was determined by accelerated thermal degradation test, that is, incubate the protein at 37°C for 48h, and no obvious degradation and precipitation were observed. The loss rate is less than 5% within the expiration date under appropriate storage condition.
Restrictions:	For Research Use only

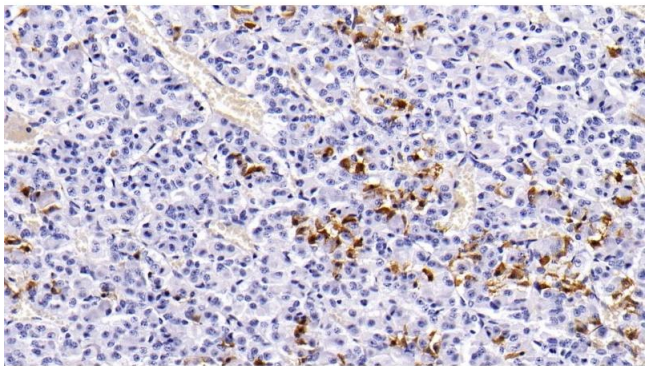
## Handling

Format:	Liquid
Buffer:	PBS, pH 7.4, containing 0.02 % Sodium azide, 50 % glycerol.
Preservative:	Sodium azide
Precaution of Use:	This product contains Sodium azide: a POISONOUS AND HAZARDOUS SUBSTANCE which should be handled by trained staff only.
Storage:	4 °C,-20 °C
Storage Comment:	Store at 4°C for frequent use. Stored at -20°C in a manual defrost freezer for two year without detectable loss of activity. Avoid repeated freeze-thaw cycles.
Expiry Date:	24 months



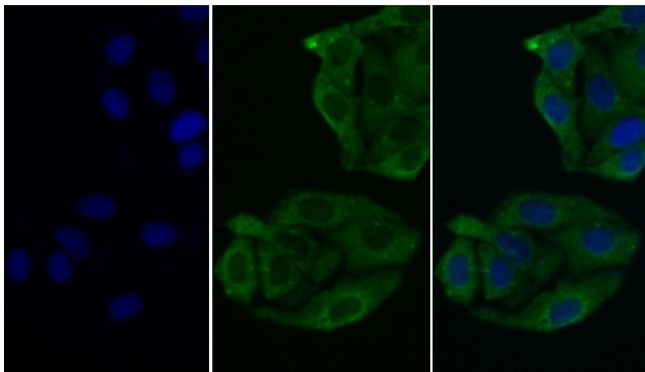
Western Blotting

**Image 1.** Detection of PRL in Rat Heart lysate using Monoclonal Antibody to Prolactin (PRL)



Immunohistochemistry

**Image 2.** Detection of PRL in Porcine Pituitary Tissue using Monoclonal Antibody to Prolactin (PRL)



Immunohistochemistry

**Image 3.** Detection of PRL in Human Hela cell using Monoclonal Antibody to Prolactin (PRL)