

Datasheet for ABIN7426115
anti-Ceruloplasmin antibody (AA 789-1065)[Go to Product page](#)

5 Images

Overview

Quantity:	100 µL
Target:	Ceruloplasmin (CP)
Binding Specificity:	AA 789-1065
Reactivity:	Human
Host:	Mouse
Clonality:	Monoclonal
Conjugate:	This Ceruloplasmin antibody is un-conjugated
Application:	Western Blotting (WB), Immunohistochemistry (IHC), Immunoprecipitation (IP), Immunocytochemistry (ICC)

Product Details

Purpose:	Monoclonal Antibody to Ceruloplasmin (CP)
Immunogen:	Recombinant Ceruloplasmin (CP) corresponding to Asp789~Gly1065 with N-terminal His Tag
Clone:	C1
Isotype:	IgG2b kappa
Specificity:	The antibody is a mouse monoclonal antibody raised against CP. It has been selected for its ability to recognize CP in immunohistochemical staining and western blotting.
Cross-Reactivity:	Rat
Purification:	Protein A + Protein G affinity chromatography

Target Details

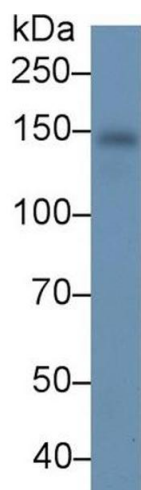
Target:	Ceruloplasmin (CP)
Alternative Name:	Ceruloplasmin (CP Products)
Background:	CP2, CER, Caeruloplasmin, Ferroxidase, Oxygen Oxidoreductase
Pathways:	Transition Metal Ion Homeostasis

Application Details

Application Notes:	Western blotting: 0.5-3 µg/mL Immunohistochemistry: 5-30 µg/mL Immunocytochemistry: 5-30 µg/mL Optimal working dilutions must be determined by end user.
Comment:	The thermal stability is described by the loss rate. The loss rate was determined by accelerated thermal degradation test, that is, incubate the protein at 37°C for 48h, and no obvious degradation and precipitation were observed. The loss rate is less than 5% within the expiration date under appropriate storage condition.
Restrictions:	For Research Use only

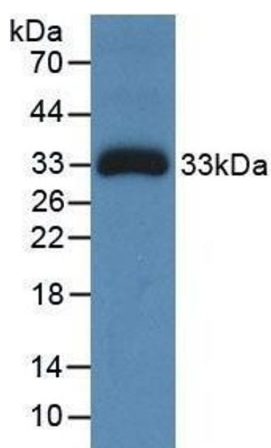
Handling

Format:	Liquid
Buffer:	0.01M PBS, pH 7.4, containing 0.05 % Proclin-300, 50 % glycerol.
Preservative:	ProClin
Precaution of Use:	This product contains ProClin: a POISONOUS AND HAZARDOUS SUBSTANCE which should be handled by trained staff only.
Storage:	4 °C,-20 °C
Storage Comment:	Store at 4°C for frequent use. Stored at -20°C in a manual defrost freezer for two year without detectable loss of activity. Avoid repeated freeze-thaw cycles.
Expiry Date:	24 months



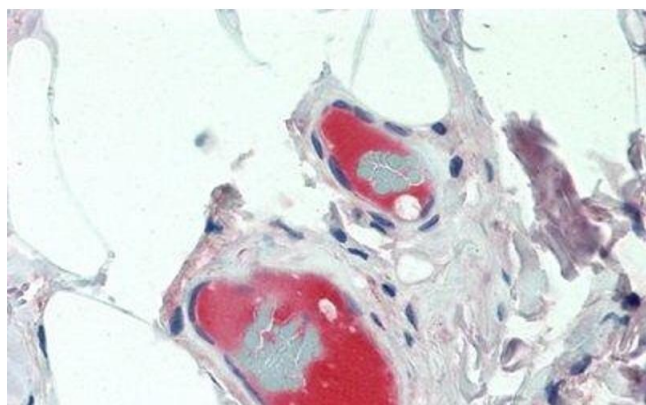
Western Blotting

Image 1. Detection of CP in Human Serum using Monoclonal Antibody to Ceruloplasmin (CP)



Western Blotting

Image 2. Detection of Recombinant Ceruloplasmin, Human using Monoclonal Antibody to Ceruloplasmin (CP)



Immunohistochemistry

Image 3. Detection of CP in Human Small Intestine Tissue using Monoclonal Antibody to Ceruloplasmin (CP)

Please check the [product details page](#) for more images. Overall 5 images are available for ABIN7426115.