

Datasheet for ABIN7426127
anti-Nephrin antibody (AA 27-234)

3 Images

[Go to Product page](#)

Overview

Quantity:	100 µL
Target:	Nephrin (NPHS1)
Binding Specificity:	AA 27-234
Reactivity:	Human
Host:	Mouse
Clonality:	Monoclonal
Conjugate:	This Nephrin antibody is un-conjugated
Application:	Western Blotting (WB), Immunohistochemistry (IHC), Immunoprecipitation (IP), Immunocytochemistry (ICC)

Product Details

Purpose:	Monoclonal Antibody to Nephrin (NPHN)
Immunogen:	Recombinant Nephrin (NPHN) corresponding to Pro27~Val234 with N-terminal His Tag
Clone:	C8
Isotype:	IgG2a kappa
Specificity:	The antibody is a mouse monoclonal antibody raised against NPHN. It has been selected for its ability to recognize NPHN in immunohistochemical staining and western blotting.
Purification:	Protein A + Protein G affinity chromatography

Target Details

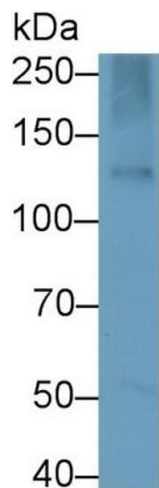
Target:	Nephrin (NPHS1)
Alternative Name:	Nephrin (NPHS1 Products)
Background:	NPHS1, CNF, Nephrosis 1, Congenital Finnish Type, Renal glomerulus-specific cell adhesion receptor
Pathways:	Regulation of Actin Filament Polymerization , Skeletal Muscle Fiber Development

Application Details

Application Notes:	Western blotting: 0.5-2 µg/mL Immunohistochemistry: 5-20 µg/mL Immunocytochemistry: 5-20 µg/mL Optimal working dilutions must be determined by end user.
Comment:	The thermal stability is described by the loss rate. The loss rate was determined by accelerated thermal degradation test, that is, incubate the protein at 37°C for 48h, and no obvious degradation and precipitation were observed. The loss rate is less than 5% within the expiration date under appropriate storage condition.
Restrictions:	For Research Use only

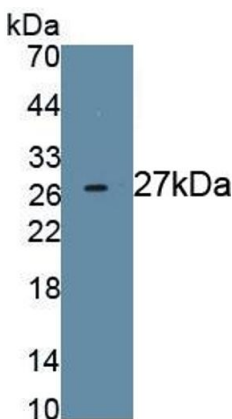
Handling

Format:	Liquid
Buffer:	PBS, pH 7.4, containing 0.02 % Sodium azide, 50 % glycerol.
Preservative:	Sodium azide
Precaution of Use:	This product contains Sodium azide: a POISONOUS AND HAZARDOUS SUBSTANCE which should be handled by trained staff only.
Storage:	4 °C,-20 °C
Storage Comment:	Store at 4°C for frequent use. Stored at -20°C in a manual defrost freezer for two year without detectable loss of activity. Avoid repeated freeze-thaw cycles.
Expiry Date:	24 months



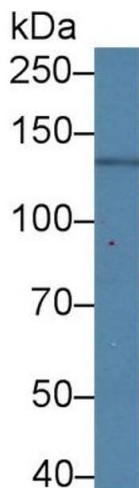
Western Blotting

Image 1. Detection of NPHN in HepG2 cell lysate using Monoclonal Antibody to Nephrin (NPHN)



Western Blotting

Image 2. Detection of Recombinant NPHN, Human using Monoclonal Antibody to Nephrin (NPHN)



Western Blotting

Image 3. Detection of NPHN in Human 293T cell lysate using Monoclonal Antibody to Nephrin (NPHN)