

Datasheet for ABIN7426217  
**anti-GLUT1 antibody (AA 251-329)**

## 4 Images

[Go to Product page](#)

## Overview

Quantity:	100 µL
Target:	GLUT1 (SLC2A1)
Binding Specificity:	AA 251-329
Reactivity:	Human
Host:	Mouse
Clonality:	Monoclonal
Conjugate:	This GLUT1 antibody is un-conjugated
Application:	Western Blotting (WB), Immunohistochemistry (IHC), Immunoprecipitation (IP), Immunocytochemistry (ICC)

## Product Details

Purpose:	Monoclonal Antibody to Glucose Transporter 1 (GLUT1)
Immunogen:	Recombinant Glucose Transporter 1 (GLUT1) corresponding to Met251~Glu329 with N-terminal His Tag
Clone:	C3
Isotype:	IgG2b kappa
Specificity:	The antibody is a mouse monoclonal antibody raised against GLUT1. It has been selected for its ability to recognize GLUT1 in immunohistochemical staining and western blotting.
Purification:	Protein A + Protein G affinity chromatography

## Target Details

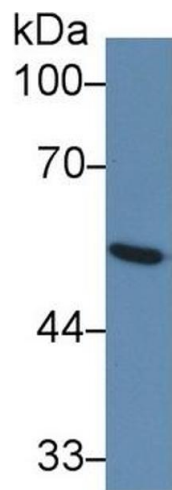
Target:	GLUT1 (SLC2A1)
Alternative Name:	Glucose Transporter 1 ( <a href="#">SLC2A1 Products</a> )
Background:	SLC2A1, SLC2-A1, GLUT, Solute Carrier Family 2 Member 1, Facilitated Glucose Transporter, Glucose transporter type 1, erythrocyte/brain, HepG2 glucose transporter
Pathways:	<a href="#">Sensory Perception of Sound</a> , <a href="#">Dicarboxylic Acid Transport</a> , <a href="#">Warburg Effect</a>

## Application Details

Application Notes:	Western blotting: 0.5-2 µg/mL Immunohistochemistry: 5-20 µg/mL Immunocytochemistry: 5-20 µg/mL Optimal working dilutions must be determined by end user.
Comment:	The thermal stability is described by the loss rate. The loss rate was determined by accelerated thermal degradation test, that is, incubate the protein at 37°C for 48h, and no obvious degradation and precipitation were observed. The loss rate is less than 5% within the expiration date under appropriate storage condition.
Restrictions:	For Research Use only

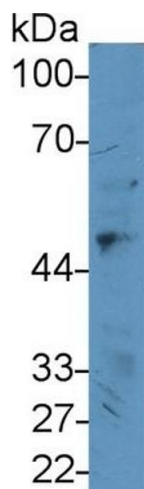
## Handling

Format:	Liquid
Buffer:	PBS, pH 7.4, containing 0.02 % Sodium azide, 50 % glycerol.
Preservative:	Sodium azide
Precaution of Use:	This product contains Sodium azide: a POISONOUS AND HAZARDOUS SUBSTANCE which should be handled by trained staff only.
Storage:	4 °C, -20 °C
Storage Comment:	Store at 4°C for frequent use. Stored at -20°C in a manual defrost freezer for two year without detectable loss of activity. Avoid repeated freeze-thaw cycles.
Expiry Date:	24 months



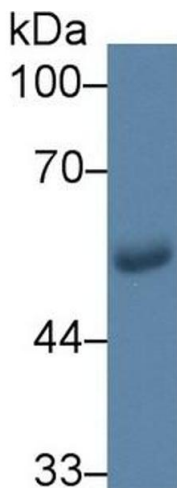
**Western Blotting**

**Image 1.** Detection of GLUT1 in Human Serum using Monoclonal Antibody to Glucose Transporter 1 (GLUT1)



**Western Blotting**

**Image 2.** Detection of GLUT1 in Human Placenta lysate using Monoclonal Antibody to Glucose Transporter 1 (GLUT1)



**Western Blotting**

**Image 3.** Detection of GLUT1 in Human Saliva using Monoclonal Antibody to Glucose Transporter 1 (GLUT1)

Please check the [product details page](#) for more images. Overall 4 images are available for ABIN7426217.