

Datasheet for ABIN7426250  
**anti-Cathepsin D antibody (AA 21-412)**

## 5 Images

[Go to Product page](#)

## Overview

Quantity:	100 µL
Target:	Cathepsin D (CTSD)
Binding Specificity:	AA 21-412
Reactivity:	Human
Host:	Mouse
Clonality:	Monoclonal
Conjugate:	This Cathepsin D antibody is un-conjugated
Application:	Western Blotting (WB), Immunohistochemistry (IHC), Immunoprecipitation (IP), Immunocytochemistry (ICC)

## Product Details

Purpose:	Monoclonal Antibody to Cathepsin D (CTSD)
Immunogen:	Eukaryotic Cathepsin D (CTSD) corresponding to Leu21~Leu412 with N-terminal His Tag
Clone:	C9
Isotype:	IgG
Specificity:	The antibody is a mouse monoclonal antibody raised against CTSD. It has been selected for its ability to recognize CTSD in immunohistochemical staining and western blotting.
Cross-Reactivity:	Rat
Purification:	Protein A + Protein G affinity chromatography

## Target Details

Target:	Cathepsin D (CTSD)
Alternative Name:	Cathepsin D ( <a href="#">CTSD Products</a> )
Background:	CPSD, CLN10, Lysosomal Aspartyl Protease, Ceroid-Lipofuscinosis, Neuronal 10
Pathways:	<a href="#">Peptide Hormone Metabolism</a>

## Application Details

Application Notes:	Western blotting: 0.2-2 µg/mL 1:500-5000 Immunohistochemistry: 5-20 µg/mL 1:50-200 Immunocytochemistry: 5-20 µg/mL 1:50-200 Optimal working dilutions must be determined by end user.
Comment:	The thermal stability is described by the loss rate. The loss rate was determined by accelerated thermal degradation test, that is, incubate the protein at 37°C for 48h, and no obvious degradation and precipitation were observed. The loss rate is less than 5% within the expiration date under appropriate storage condition.
Restrictions:	For Research Use only

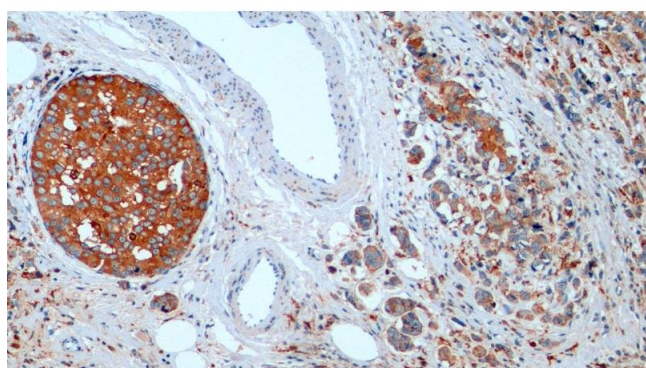
## Handling

Format:	Liquid
Buffer:	PBS, pH 7.4, containing 0.02 % Sodium azide, 50 % glycerol.
Preservative:	Sodium azide
Precaution of Use:	This product contains Sodium azide: a POISONOUS AND HAZARDOUS SUBSTANCE which should be handled by trained staff only.
Storage:	4 °C, -20 °C
Storage Comment:	Store at 4°C for frequent use. Stored at -20°C in a manual defrost freezer for two year without detectable loss of activity. Avoid repeated freeze-thaw cycles.
Expiry Date:	24 months



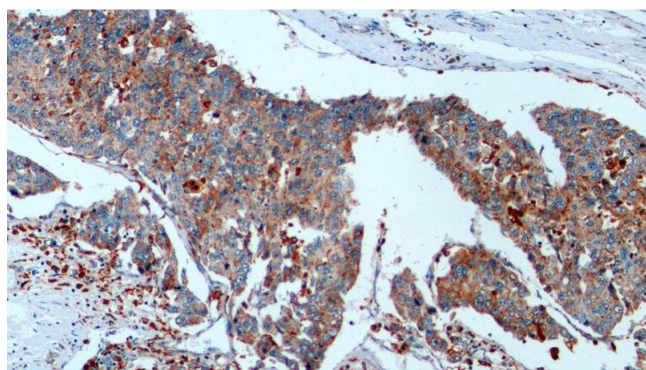
#### Western Blotting

**Image 1.** Detection of CTSD in Rat Kidney lysate using Monoclonal Antibody to Cathepsin D (CTSD)



#### Immunohistochemistry

**Image 2.** Detection of CTSD in Human Breast cancer Tissue using Monoclonal Antibody to Cathepsin D (CTSD)



#### Immunohistochemistry

**Image 3.** Detection of CTSD in Human Liver cancer Tissue using Monoclonal Antibody to Cathepsin D (CTSD)

Please check the [product details page](#) for more images. Overall 5 images are available for ABIN7426250.