



[Go to Product page](#)

Datasheet for ABIN7426292  
**anti-LUM antibody (AA 19-338)**

1 Image

### Overview

Quantity:	100 µL
Target:	LUM
Binding Specificity:	AA 19-338
Reactivity:	Human
Host:	Mouse
Clonality:	Monoclonal
Conjugate:	This LUM antibody is un-conjugated
Application:	Western Blotting (WB), Immunohistochemistry (IHC), Immunoprecipitation (IP), Immunocytochemistry (ICC)

### Product Details

Purpose:	Monoclonal Antibody to Lumican (LUM)
Immunogen:	Recombinant Lumican (LUM) corresponding to Gln19~Asn338 (Accession # P51884)
Clone:	C4
Isotype:	IgG2b kappa
Specificity:	The antibody is a mouse monoclonal antibody raised against LUM. It has been selected for its ability to recognize LUM in immunohistochemical staining and western blotting.
Cross-Reactivity:	Pig, Rat
Purification:	Protein A + Protein G affinity chromatography

## Target Details

---

Target:	LUM
Alternative Name:	Lumican ( <a href="#">LUM Products</a> )
Background:	LDC, SLRR2D, KSPG lumican, Keratan sulfate proteoglycan lumican
Pathways:	<a href="#">Glycosaminoglycan Metabolic Process</a>

## Application Details

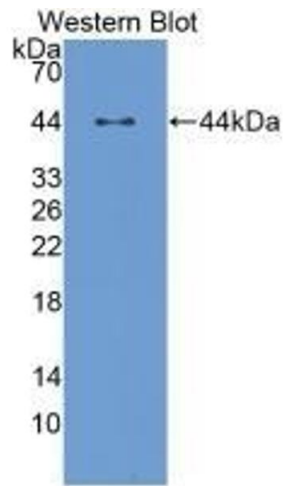
---

Application Notes:	Western blotting: 0.5-2 µg/mL Immunohistochemistry: 5-20 µg/mL Immunocytochemistry: 5-20 µg/mL Optimal working dilutions must be determined by end user.
Comment:	The thermal stability is described by the loss rate. The loss rate was determined by accelerated thermal degradation test, that is, incubate the protein at 37°C for 48h, and no obvious degradation and precipitation were observed. The loss rate is less than 5% within the expiration date under appropriate storage condition.
Restrictions:	For Research Use only

## Handling

---

Format:	Liquid
Buffer:	PBS, pH 7.4, containing 0.02 % Sodium azide, 50 % glycerol.
Preservative:	Sodium azide
Precaution of Use:	This product contains Sodium azide: a POISONOUS AND HAZARDOUS SUBSTANCE which should be handled by trained staff only.
Storage:	4 °C,-20 °C
Storage Comment:	Store at 4°C for frequent use. Stored at -20°C in a manual defrost freezer for two year without detectable loss of activity. Avoid repeated freeze-thaw cycles.
Expiry Date:	24 months



### Western Blotting

**Image 1.** Detection of Recombinant LUM, Human using Monoclonal Antibody to Lumican (LUM)