

Datasheet for ABIN7426355
anti-SIGLEC8 antibody (AA 70-336)[Go to Product page](#)

1 Image

Overview

Quantity:	100 µL
Target:	SIGLEC8
Binding Specificity:	AA 70-336
Reactivity:	Human
Host:	Mouse
Clonality:	Monoclonal
Conjugate:	This SIGLEC8 antibody is un-conjugated
Application:	Western Blotting (WB), Immunohistochemistry (IHC), Immunoprecipitation (IP), Immunocytochemistry (ICC)

Product Details

Purpose:	Monoclonal Antibody to Sialic Acid Binding Ig Like Lectin 8 (SIGLEC8)
Immunogen:	Recombinant Sialic Acid Binding Ig Like Lectin 8 (SIGLEC8) corresponding to Gly70~Ser336 with N-terminal His and GST Tag
Clone:	C1
Isotype:	IgG
Specificity:	The antibody is a mouse monoclonal antibody raised against SIGLEC8. It has been selected for its ability to recognize SIGLEC8 in immunohistochemical staining and western blotting.
Cross-Reactivity:	Pig, Rat
Purification:	Protein A + Protein G affinity chromatography

Target Details

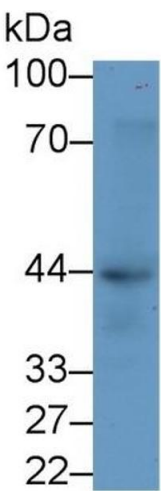
Target:	SIGLEC8
Alternative Name:	Sialic Acid Binding Ig Like Lectin 8 (SIGLEC8 Products)
Background:	SAF2, SIGLEC-8, SIGLEC8L, Sialoadhesin family member 2

Application Details

Application Notes:	Western blotting: 0.2-2 µg/mL 1:500-5000 Immunohistochemistry: 5-20 µg/mL 1:50-200 Immunocytochemistry: 5-20 µg/mL 1:50-200 Optimal working dilutions must be determined by end user.
Comment:	The thermal stability is described by the loss rate. The loss rate was determined by accelerated thermal degradation test, that is, incubate the protein at 37°C for 48h, and no obvious degradation and precipitation were observed. The loss rate is less than 5% within the expiration date under appropriate storage condition.
Restrictions:	For Research Use only

Handling

Format:	Liquid
Buffer:	PBS, pH 7.4, containing 0.02 % Sodium azide, 50 % glycerol.
Preservative:	Sodium azide
Precaution of Use:	This product contains Sodium azide: a POISONOUS AND HAZARDOUS SUBSTANCE which should be handled by trained staff only.
Storage:	4 °C,-20 °C
Storage Comment:	Store at 4°C for frequent use. Stored at -20°C in a manual defrost freezer for two year without detectable loss of activity. Avoid repeated freeze-thaw cycles.
Expiry Date:	24 months



Western Blotting

Image 1. Detection of SIGLEC8 in Rat Liver lysate using Monoclonal Antibody to Sialic Acid Binding Ig Like Lectin 8 (SIGLEC8)