

Datasheet for ABIN7426373

anti-ErbB2/Her2 antibody (AA 376-578)[Go to Product page](#)**3** Images

Overview

Quantity:	100 µL
Target:	ErbB2/Her2
Binding Specificity:	AA 376-578
Reactivity:	Human
Host:	Mouse
Clonality:	Monoclonal
Conjugate:	This ErbB2/Her2 antibody is un-conjugated
Application:	Western Blotting (WB), Immunohistochemistry (IHC), Immunoprecipitation (IP), Immunocytochemistry (ICC)

Product Details

Purpose:	Monoclonal Antibody to Receptor Tyrosine Protein Kinase erbB-2 (ErbB2)
Immunogen:	Recombinant Receptor Tyrosine Protein Kinase erbB-2 (ErbB2) corresponding to Phe376~Gly578 with N-terminal His and GST Tag
Clone:	C16
Isotype:	IgG2b kappa
Specificity:	The antibody is a mouse monoclonal antibody raised against ErbB2. It has been selected for its ability to recognize ErbB2 in immunohistochemical staining and western blotting.
Purification:	Protein A + Protein G affinity chromatography

Target Details

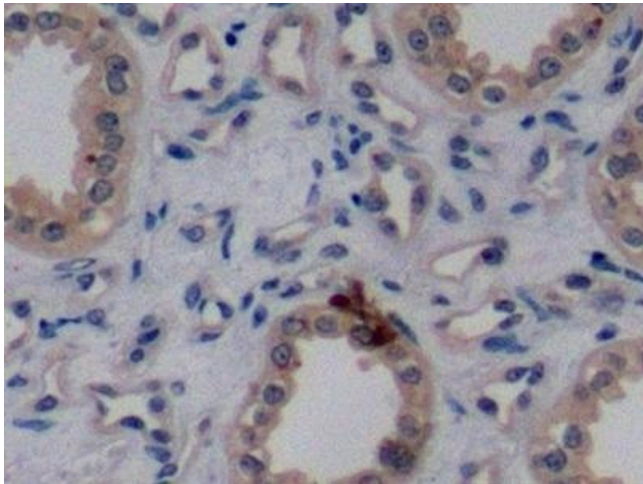
Target:	ErbB2/Her2
Alternative Name:	ErbB2 (ErbB2/Her2 Products)
Background:	CD340, EGFR2, HER-2/neu, HER2, NEU, MLN 19, NGL, TKR1, p185, Epidermal Growth Factor Receptor 2, V-Erb-B2 Erythroblastic Leukemia Viral Oncogene Homolog 2, Neuro/Glioblastoma Derived Oncogene Homolog
UniProt:	P04626
Pathways:	RTK Signaling , Fc-epsilon Receptor Signaling Pathway , EGFR Signaling Pathway , Neurotrophin Signaling Pathway , Skeletal Muscle Fiber Development

Application Details

Application Notes:	Western blotting: 0.01-2 µg/mL, Immunohistochemistry: 5-20 µg/mL, Immunocytochemistry: 5-20 µg/mL, Optimal working dilutions must be determined by end user.
Comment:	The thermal stability is described by the loss rate. The loss rate was determined by accelerated thermal degradation test, that is, incubate the protein at 37°C for 48h, and no obvious degradation and precipitation were observed. The loss rate is less than 5% within the expiration date under appropriate storage condition.
Restrictions:	For Research Use only

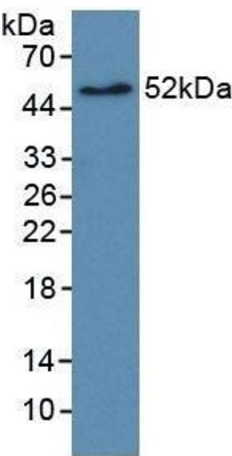
Handling

Format:	Liquid
Concentration:	1 mg/mL
Buffer:	PBS, pH 7.4, containing 0.02 % Sodium azide, 50 % glycerol.
Preservative:	Sodium azide
Precaution of Use:	This product contains Sodium azide: a POISONOUS AND HAZARDOUS SUBSTANCE which should be handled by trained staff only.
Storage:	4 °C, -20 °C
Storage Comment:	Store at 4°C for frequent use. Stored at -20°C in a manual defrost freezer for two year without detectable loss of activity. Avoid repeated freeze-thaw cycles.
Expiry Date:	24 months



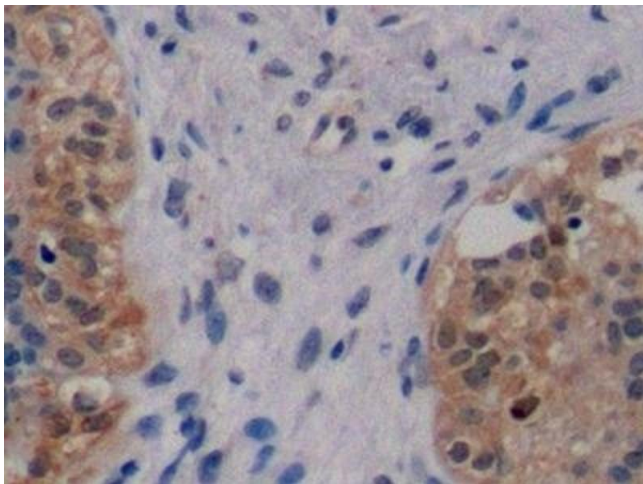
Immunohistochemistry

Image 1. Detection of ErbB2 in Human Kidney Tissue using Monoclonal Antibody to Receptor Tyrosine Protein Kinase erbB-2 (ErbB2)



Western Blotting

Image 2. Detection of Recombinant EGFR2, Human using Monoclonal Antibody to Receptor Tyrosine Protein Kinase erbB-2 (ErbB2)



Immunohistochemistry

Image 3. Detection of ErbB2 in Human Breast cancer Tissue using Monoclonal Antibody to Receptor Tyrosine Protein Kinase erbB-2 (ErbB2)