

Datasheet for ABIN7426460
anti-LAMA3 antibody (AA 47-296)

3 Images

[Go to Product page](#)

Overview

Quantity:	100 µL
Target:	LAMA3
Binding Specificity:	AA 47-296
Reactivity:	Human
Host:	Mouse
Clonality:	Monoclonal
Conjugate:	This LAMA3 antibody is un-conjugated
Application:	Immunohistochemistry (IHC), Western Blotting (WB), Immunocytochemistry (ICC), Immunoprecipitation (IP)

Product Details

Purpose:	Monoclonal Antibody to Laminin Alpha 3 (LAMA3)
Immunogen:	Recombinant Laminin Alpha 3 (LAMA3) corresponding to Gln47~Leu296 with N-terminal His Tag
Clone:	C3
Isotype:	IgG1 kappa
Specificity:	The antibody is a mouse monoclonal antibody raised against LAMA3. It has been selected for its ability to recognize LAMA3 in immunohistochemical staining and western blotting.
Purification:	Protein A + Protein G affinity chromatography

Target Details

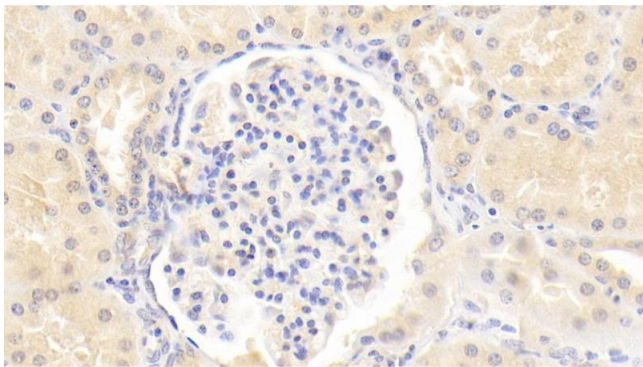
Target:	LAMA3
Alternative Name:	Laminin Alpha 3 (LAMA3 Products)
Background:	LAM-A3, E170, LAMNA, LOCS, Lama3a, Nicein subunit alpha, Kalinin subunit alpha, Epiligrin subunit alpha

Application Details

Application Notes:	Western blotting: 0.5-2 µg/mL 1:480-1900 Immunohistochemistry: 5-20 µg/mL 1:48-190 Immunocytochemistry: 5-20 µg/mL 1:48-190 Optimal working dilutions must be determined by end user.
Comment:	The thermal stability is described by the loss rate. The loss rate was determined by accelerated thermal degradation test, that is, incubate the protein at 37°C for 48h, and no obvious degradation and precipitation were observed. The loss rate is less than 5% within the expiration date under appropriate storage condition.
Restrictions:	For Research Use only

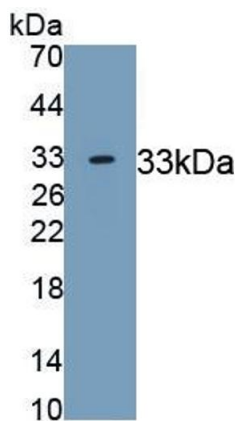
Handling

Format:	Liquid
Buffer:	PBS, pH 7.4, containing 0.02 % Sodium azide, 50 % glycerol.
Preservative:	Sodium azide
Precaution of Use:	This product contains Sodium azide: a POISONOUS AND HAZARDOUS SUBSTANCE which should be handled by trained staff only.
Storage:	4 °C, -20 °C
Storage Comment:	Store at 4°C for frequent use. Stored at -20°C in a manual defrost freezer for two year without detectable loss of activity. Avoid repeated freeze-thaw cycles.
Expiry Date:	24 months



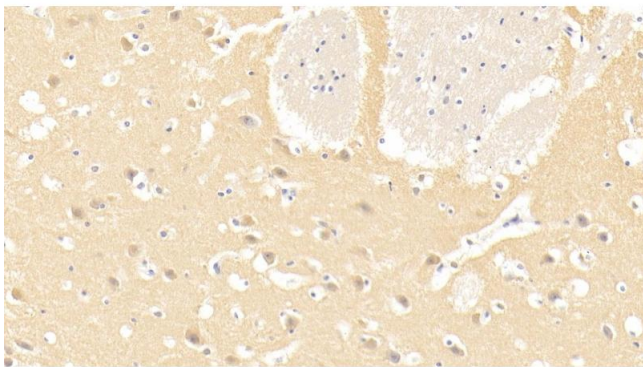
Immunohistochemistry

Image 1. Detection of LAMa3 in Human Kidney Tissue using Monoclonal Antibody to Laminin Alpha 3 (LAMa3)



Western Blotting

Image 2. Detection of Recombinant MYH4, Human using Monoclonal Antibody to Laminin Alpha 3 (LAMa3)



Immunohistochemistry

Image 3. Detection of LAMa3 in Human Cerebrum Tissue using Monoclonal Antibody to Laminin Alpha 3 (LAMa3)