

Datasheet for ABIN7426463  
**anti-LAMC2 antibody (AA 28-196)**[Go to Product page](#)

## 2 Images

## Overview

Quantity:	100 µL
Target:	LAMC2
Binding Specificity:	AA 28-196
Reactivity:	Human
Host:	Mouse
Clonality:	Monoclonal
Conjugate:	This LAMC2 antibody is un-conjugated
Application:	Western Blotting (WB), Immunohistochemistry (IHC), Immunoprecipitation (IP), Immunocytochemistry (ICC)

## Product Details

Purpose:	Monoclonal Antibody to Laminin Gamma 2 (LAMC2)
Immunogen:	Recombinant Laminin Gamma 2 (LAMC2) corresponding to Cys28~Cys196 with N-terminal His Tag
Clone:	D7
Isotype:	IgG1 kappa
Specificity:	The antibody is a mouse monoclonal antibody raised against LAMC2. It has been selected for its ability to recognize LAMC2 in immunohistochemical staining and western blotting.
Purification:	Protein A + Protein G affinity chromatography

## Target Details

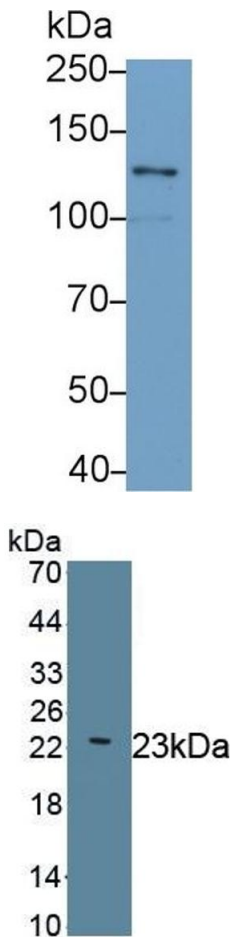
Target:	LAMC2
Alternative Name:	Laminin Gamma 2 ( <a href="#">LAMC2 Products</a> )
Background:	B2T, EBR2, EBR2A, LAMB2T, LAMNB2, Kalinin/nicein/epiligrin 100 kDa subunit, Cell-scattering factor 140 kDa subunit, Ladsin 140 kDa, Large adhesive scatter factor 140 kDa

## Application Details

Application Notes:	Western blotting: 0.5-2 µg/mL Immunohistochemistry: 5-20 µg/mL Immunocytochemistry: 5-20 µg/mL Optimal working dilutions must be determined by end user.
Comment:	The thermal stability is described by the loss rate. The loss rate was determined by accelerated thermal degradation test, that is, incubate the protein at 37°C for 48h, and no obvious degradation and precipitation were observed. The loss rate is less than 5% within the expiration date under appropriate storage condition.
Restrictions:	For Research Use only

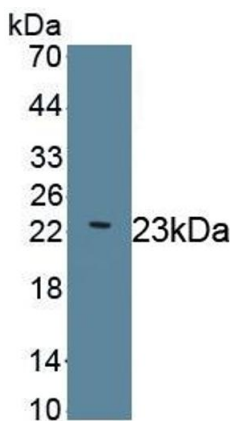
## Handling

Format:	Liquid
Buffer:	PBS, pH 7.4, containing 0.02 % Sodium azide, 50 % glycerol.
Preservative:	Sodium azide
Precaution of Use:	This product contains Sodium azide: a POISONOUS AND HAZARDOUS SUBSTANCE which should be handled by trained staff only.
Storage:	4 °C, -20 °C
Storage Comment:	Store at 4°C for frequent use. Stored at -20°C in a manual defrost freezer for two year without detectable loss of activity. Avoid repeated freeze-thaw cycles.
Expiry Date:	24 months



Western Blotting

**Image 1.** Detection of LAMC2 in K562 cell lysate using Monoclonal Antibody to Laminin Gamma 2 (LAMC2)



Western Blotting

**Image 2.** Detection of Recombinant LAMC2, Human using Monoclonal Antibody to Laminin Gamma 2 (LAMC2)