



[Go to Product page](#)

Datasheet for ABIN7426526  
**anti-KISS1 antibody (AA 20-138)**

2 Images

Overview

Quantity:	100 µL
Target:	KISS1
Binding Specificity:	AA 20-138
Reactivity:	Human
Host:	Mouse
Clonality:	Monoclonal
Conjugate:	This KISS1 antibody is un-conjugated
Application:	Western Blotting (WB), Immunohistochemistry (IHC), Immunoprecipitation (IP), Immunocytochemistry (ICC)

Product Details

Purpose:	Monoclonal Antibody to Kisspeptin 1 (KISS1)
Immunogen:	Recombinant Kisspeptin 1 (KISS1) corresponding to Glu20~Gly138 with N-terminal His Tag
Clone:	C1
Isotype:	IgG1 kappa
Specificity:	The antibody is a mouse monoclonal antibody raised against KISS1. It has been selected for its ability to recognize KISS1 in immunohistochemical staining and western blotting.
Purification:	Protein A + Protein G affinity chromatography

## Target Details

---

Target:	KISS1
Alternative Name:	Kisspeptin 1 ( <a href="#">KISS1 Products</a> )
Background:	Metastin, KiSS-1 Metastasis-Suppressor
Pathways:	<a href="#">Positive Regulation of Peptide Hormone Secretion</a>

## Application Details

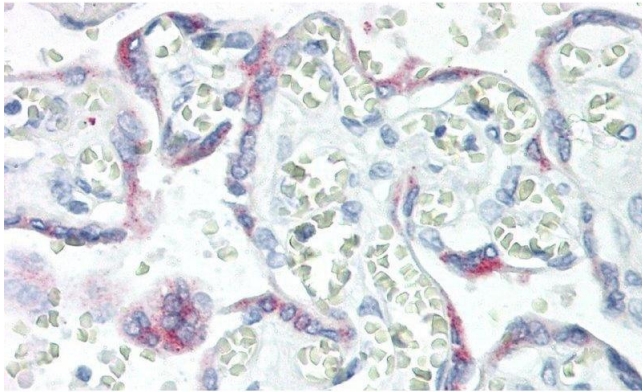
---

Application Notes:	Western blotting: 0.5-2 µg/mL Immunohistochemistry: 5-20 µg/mL Immunocytochemistry: 5-20 µg/mL Optimal working dilutions must be determined by end user.
Comment:	The thermal stability is described by the loss rate. The loss rate was determined by accelerated thermal degradation test, that is, incubate the protein at 37°C for 48h, and no obvious degradation and precipitation were observed. The loss rate is less than 5% within the expiration date under appropriate storage condition.
Restrictions:	For Research Use only

## Handling

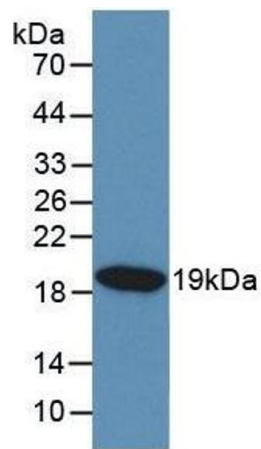
---

Format:	Liquid
Buffer:	0.01M PBS, pH 7.4, containing 0.05 % Proclin-300, 50 % glycerol.
Preservative:	ProClin
Precaution of Use:	This product contains ProClin: a POISONOUS AND HAZARDOUS SUBSTANCE which should be handled by trained staff only.
Storage:	4 °C,-20 °C
Storage Comment:	Store at 4°C for frequent use. Stored at -20°C in a manual defrost freezer for two year without detectable loss of activity. Avoid repeated freeze-thaw cycles.
Expiry Date:	24 months



### Immunohistochemistry

**Image 1.** Detection of KISS1 in Human Placenta Tissue using Monoclonal Antibody to Kisspeptin 1 (KISS1)



### Western Blotting

**Image 2.** Detection of Recombinant KISS1, Human using Monoclonal Antibody to Kisspeptin 1 (KISS1)