

Datasheet for ABIN7426550
anti-Reelin antibody (AA 26-190)

3 Images

[Go to Product page](#)

Overview

Quantity:	100 µL
Target:	Reelin (RELN)
Binding Specificity:	AA 26-190
Reactivity:	Human
Host:	Mouse
Clonality:	Monoclonal
Conjugate:	This Reelin antibody is un-conjugated
Application:	Western Blotting (WB), Immunohistochemistry (IHC), Immunoprecipitation (IP), Immunocytochemistry (ICC)

Product Details

Purpose:	Monoclonal Antibody to Reelin (RELN)
Immunogen:	Recombinant Reelin (RELN) corresponding to Ala26~Pro190 (Accession # P78509)
Clone:	C8
Isotype:	IgG2b kappa
Specificity:	The antibody is a mouse monoclonal antibody raised against RELN. It has been selected for its ability to recognize RELN in immunohistochemical staining and western blotting.
Cross-Reactivity:	Human
Purification:	Protein A + Protein G affinity chromatography

Target Details

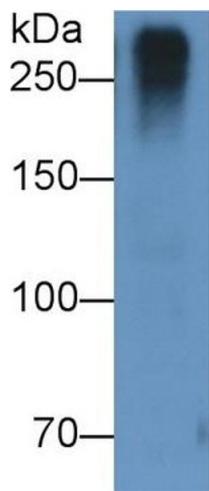
Target:	Reelin (RELN)
Alternative Name:	Reelin (RELN Products)
Background:	RL
Pathways:	Synaptic Membrane

Application Details

Application Notes:	Western blotting: 0.2-2 µg/mL 1:500-5000 Immunohistochemistry: 5-20 µg/mL 1:50-200 Immunocytochemistry: 5-20 µg/mL 1:50-200 Optimal working dilutions must be determined by end user.
Comment:	The thermal stability is described by the loss rate. The loss rate was determined by accelerated thermal degradation test, that is, incubate the protein at 37°C for 48h, and no obvious degradation and precipitation were observed. The loss rate is less than 5% within the expiration date under appropriate storage condition.
Restrictions:	For Research Use only

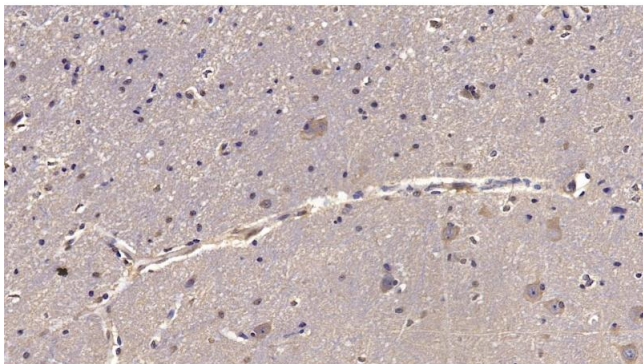
Handling

Format:	Liquid
Buffer:	0.01M PBS, pH 7.4, containing 0.05 % Proclin-300, 50 % glycerol.
Preservative:	ProClin
Precaution of Use:	This product contains ProClin: a POISONOUS AND HAZARDOUS SUBSTANCE which should be handled by trained staff only.
Storage:	4 °C,-20 °C
Storage Comment:	Store at 4°C for frequent use. Stored at -20°C in a manual defrost freezer for two year without detectable loss of activity. Avoid repeated freeze-thaw cycles.
Expiry Date:	24 months



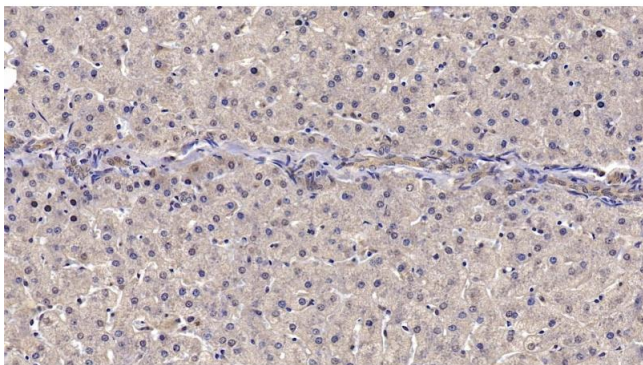
Western Blotting

Image 1. Detection of RELN in U87MG cell lysate using Monoclonal Antibody to Reelin (RELN)



Immunohistochemistry

Image 2. Detection of RELN in Human Cerebrum Tissue using Monoclonal Antibody to Reelin (RELN)



Immunohistochemistry

Image 3. Detection of RELN in Human Liver Tissue using Monoclonal Antibody to Reelin (RELN)