

Datasheet for ABIN7426556
anti-TK1 antibody (AA 2-234)[Go to Product page](#)

2 Images

Overview

Quantity:	100 µL
Target:	TK1
Binding Specificity:	AA 2-234
Reactivity:	Human
Host:	Mouse
Clonality:	Monoclonal
Conjugate:	This TK1 antibody is un-conjugated
Application:	Western Blotting (WB), Immunohistochemistry (IHC), Immunoprecipitation (IP), Immunocytochemistry (ICC)

Product Details

Purpose:	Monoclonal Antibody to Thymidine Kinase 1, Soluble (TK1)
Immunogen:	Recombinant Thymidine Kinase 1, Soluble (TK1) corresponding to Ser2~Asn234 with N-terminal His and GST Tag
Clone:	C3
Isotype:	IgG2b kappa
Specificity:	The antibody is a mouse monoclonal antibody raised against TK1. It has been selected for its ability to recognize TK1 in immunohistochemical staining and western blotting.
Cross-Reactivity:	Mouse, Pig, Rat
Purification:	Protein A + Protein G affinity chromatography

Target Details

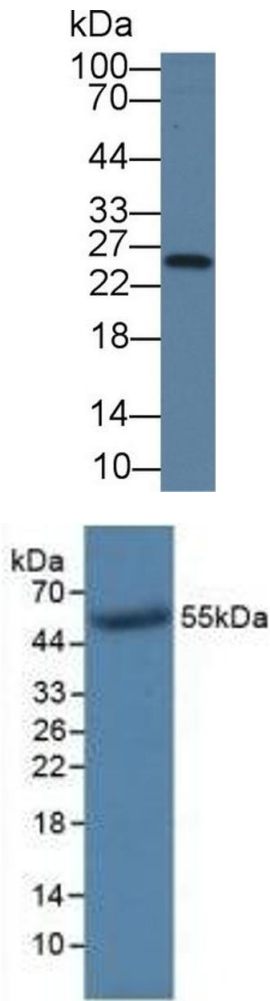
Target:	TK1
Alternative Name:	Thymidine Kinase 1, Soluble (TK1 Products)
Background:	TK2, Thymidine kinase, cytosolic

Application Details

Application Notes:	Western blotting: 0.5-5 µg/mL Immunohistochemistry: 5-50 µg/mL Immunocytochemistry: 5-50 µg/mL Optimal working dilutions must be determined by end user.
Comment:	The thermal stability is described by the loss rate. The loss rate was determined by accelerated thermal degradation test, that is, incubate the protein at 37°C for 48h, and no obvious degradation and precipitation were observed. The loss rate is less than 5% within the expiration date under appropriate storage condition.
Restrictions:	For Research Use only

Handling

Format:	Liquid
Buffer:	PBS, pH 7.4, containing 0.02 % Sodium azide, 50 % glycerol.
Preservative:	Sodium azide
Precaution of Use:	This product contains Sodium azide: a POISONOUS AND HAZARDOUS SUBSTANCE which should be handled by trained staff only.
Storage:	4 °C,-20 °C
Storage Comment:	Store at 4°C for frequent use. Stored at -20°C in a manual defrost freezer for two year without detectable loss of activity. Avoid repeated freeze-thaw cycles.
Expiry Date:	24 months



Western Blotting

Image 1. Detection of TK1 in Human HeLa cell lysate using Monoclonal Antibody to Thymidine Kinase 1, Soluble (TK1)

Western Blotting

Image 2. Detection of Recombinant TK1, Human using Monoclonal Antibody to Thymidine Kinase 1, Soluble (TK1)