



[Go to Product page](#)

Datasheet for ABIN7426607
anti-LHB antibody (AA 21-141)

2 Images

Overview

Quantity:	100 µL
Target:	LHB
Binding Specificity:	AA 21-141
Reactivity:	Rat
Host:	Mouse
Clonality:	Monoclonal
Conjugate:	This LHB antibody is un-conjugated
Application:	Western Blotting (WB), Immunohistochemistry (IHC), Immunoprecipitation (IP), Immunocytochemistry (ICC)

Product Details

Purpose:	Monoclonal Antibody to Luteinizing Hormone Beta Polypeptide (LHb)
Immunogen:	Recombinant Luteinizing Hormone Beta Polypeptide (LHb) corresponding to Ser21~Phe141 with N-terminal His Tag
Clone:	C4
Isotype:	IgG2a kappa
Specificity:	The antibody is a mouse monoclonal antibody raised against LHb. It has been selected for its ability to recognize LHb in immunohistochemical staining and western blotting.
Cross-Reactivity:	Mouse
Purification:	Protein A + Protein G affinity chromatography

Target Details

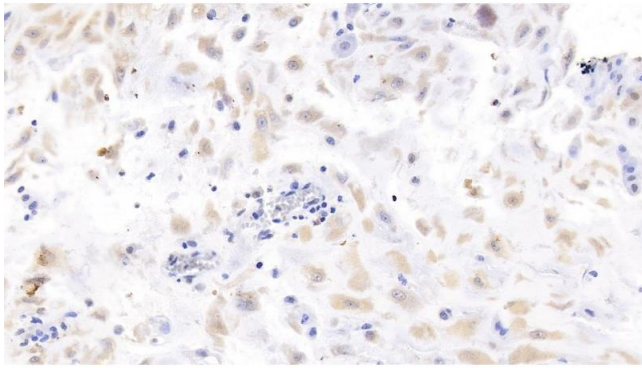
Target:	LHB
Alternative Name:	Luteinizing Hormone Beta Polypeptide (LHB Products)
Background:	LH-B, CGB4, LSH-B, hLHB, Lutropin Subunit Beta, Interstitial Cell Stimulating Hormone, Beta Chain
Pathways:	Metabolism of Steroid Hormones and Vitamin D , Peptide Hormone Metabolism , Hormone Activity , C21-Steroid Hormone Metabolic Process

Application Details

Application Notes:	Western blotting: 0.5-2 µg/mL Immunohistochemistry: 5-20 µg/mL Immunocytochemistry: 5-20 µg/mL Optimal working dilutions must be determined by end user.
Comment:	The thermal stability is described by the loss rate. The loss rate was determined by accelerated thermal degradation test, that is, incubate the protein at 37°C for 48h, and no obvious degradation and precipitation were observed. The loss rate is less than 5% within the expiration date under appropriate storage condition.
Restrictions:	For Research Use only

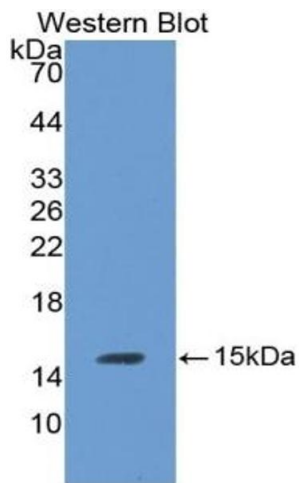
Handling

Format:	Liquid
Buffer:	PBS, pH 7.4, containing 0.02 % Sodium azide, 50 % glycerol.
Preservative:	Sodium azide
Precaution of Use:	This product contains Sodium azide: a POISONOUS AND HAZARDOUS SUBSTANCE which should be handled by trained staff only.
Storage:	4 °C, -20 °C
Storage Comment:	Store at 4°C for frequent use. Stored at -20°C in a manual defrost freezer for two year without detectable loss of activity. Avoid repeated freeze-thaw cycles.
Expiry Date:	24 months



Immunohistochemistry

Image 1. Detection of LHb in Human Placenta Tissue using Monoclonal Antibody to Luteinizing Hormone Beta Polypeptide (LHb)



Western Blotting

Image 2. Detection of Recombinant LHb, Rat using Monoclonal Antibody to Luteinizing Hormone Beta Polypeptide (LHb)