



Datasheet for ABIN7426658
anti-GCKR antibody (AA 90-286)



[Go to Product page](#)

1 Image

Overview

| | |
|----------------------|--|
| Quantity: | 100 µL |
| Target: | GCKR |
| Binding Specificity: | AA 90-286 |
| Reactivity: | Rat |
| Host: | Mouse |
| Clonality: | Monoclonal |
| Conjugate: | This GCKR antibody is un-conjugated |
| Application: | Western Blotting (WB), Immunohistochemistry (IHC), Immunoprecipitation (IP), Immunocytochemistry (ICC) |

Product Details

| | |
|-------------------|---|
| Purpose: | Monoclonal Antibody to Glucokinase Regulatory Protein (GKRP) |
| Immunogen: | Recombinant Glucokinase Regulatory Protein (GKRP) corresponding to Val90~Ala286 (Accession # Q07071) with N-terminal His Tag |
| Clone: | 4# |
| Isotype: | IgG1 kappa |
| Specificity: | The antibody is a mouse monoclonal antibody raised against GKRP. It has been selected for its ability to recognize GKRP in immunohistochemical staining and western blotting. |
| Cross-Reactivity: | Human, Mouse |
| Purification: | Protein A + Protein G affinity chromatography |

Target Details

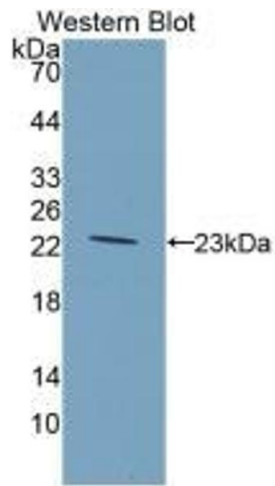
| | |
|-------------------|--|
| Target: | GCKR |
| Alternative Name: | Glucokinase Regulatory Protein (GCKR Products) |
| Background: | GCKR, Glucokinase(hexokinase 4)regulator |
| Pathways: | Carbohydrate Homeostasis , Regulation of Carbohydrate Metabolic Process , Protein targeting to Nucleus |

Application Details

| | |
|--------------------|---|
| Application Notes: | Western blotting: 0.5-5 µg/mL Immunocytochemistry in formalin fixed cells: 5-30 µg/mL Immunohistochemistry in formalin fixed frozen section: 5-30 µg/mL Immunohistochemistry in paraffin section: 5-30 µg/mL Enzyme-linked Immunosorbent Assay: 0.05-2 µg/mL Optimal working dilutions must be determined by end user. |
| Comment: | The thermal stability is described by the loss rate. The loss rate was determined by accelerated thermal degradation test, that is, incubate the protein at 37°C for 48h, and no obvious degradation and precipitation were observed. The loss rate is less than 5% within the expiration date under appropriate storage condition. |
| Restrictions: | For Research Use only |

Handling

| | |
|--------------------|---|
| Format: | Liquid |
| Buffer: | PBS, pH 7.4, containing 0.02 % Sodium azide, 50 % glycerol. |
| Preservative: | Sodium azide |
| Precaution of Use: | This product contains Sodium azide: a POISONOUS AND HAZARDOUS SUBSTANCE which should be handled by trained staff only. |
| Storage: | 4 °C,-20 °C |
| Storage Comment: | Store at 4°C for frequent use. Stored at -20°C in a manual defrost freezer for two year without detectable loss of activity. Avoid repeated freeze-thaw cycles. |
| Expiry Date: | 24 months |



Western Blotting

Image 1. Detection of Recombinant GKRP, Rat using Monoclonal Antibody to Glucokinase Regulatory Protein (GKRP)