



[Go to Product page](#)

Datasheet for ABIN7426739

anti-Clusterin antibody (AA 227-447)

4 Images

Overview

Quantity:	100 µL
Target:	Clusterin (CLU)
Binding Specificity:	AA 227-447
Reactivity:	Rat
Host:	Mouse
Clonality:	Monoclonal
Conjugate:	This Clusterin antibody is un-conjugated
Application:	Western Blotting (WB), Immunohistochemistry (IHC), Immunoprecipitation (IP), Immunocytochemistry (ICC)

Product Details

Purpose:	Monoclonal Antibody to Clusterin (CLU)
Immunogen:	Recombinant Clusterin (CLU) corresponding to Ser227~Glu447 with N-terminal His Tag
Clone:	C2
Isotype:	IgG2a kappa
Specificity:	The antibody is a mouse monoclonal antibody raised against CLU. It has been selected for its ability to recognize CLU in immunohistochemical staining and western blotting.
Cross-Reactivity:	Mouse
Purification:	Protein A + Protein G affinity chromatography

Target Details

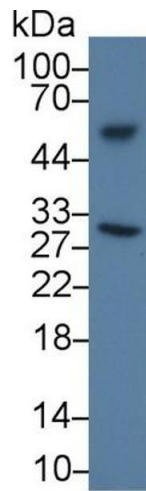
Target:	Clusterin (CLU)
Alternative Name:	Clusterin (CLU Products)
Background:	CLU, TRPM2, KUB1, CLI, APOJ, SGP2, AAG4, APO-J, SP-40, Apolipoprotein J, Complement Lysis Inhibitor, 40,Sulfated Glycoprotein 2, Testosterone-Repressed Prostate Message 2
Pathways:	Apoptosis , Negative Regulation of intrinsic apoptotic Signaling

Application Details

Application Notes:	Western blotting: 0.5-2 µg/mL Immunohistochemistry: 5-20 µg/mL Immunocytochemistry: 5-20 µg/mL Optimal working dilutions must be determined by end user.
Comment:	The thermal stability is described by the loss rate. The loss rate was determined by accelerated thermal degradation test, that is, incubate the protein at 37°C for 48h, and no obvious degradation and precipitation were observed. The loss rate is less than 5% within the expiration date under appropriate storage condition.
Restrictions:	For Research Use only

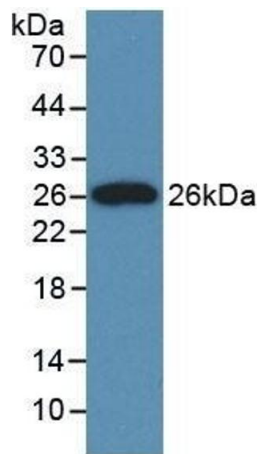
Handling

Format:	Liquid
Buffer:	0.01M PBS, pH 7.4, containing 0.05 % Proclin-300, 50 % glycerol.
Preservative:	ProClin
Precaution of Use:	This product contains ProClin: a POISONOUS AND HAZARDOUS SUBSTANCE which should be handled by trained staff only.
Storage:	4 °C,-20 °C
Storage Comment:	Store at 4°C for frequent use. Stored at -20°C in a manual defrost freezer for two year without detectable loss of activity. Avoid repeated freeze-thaw cycles.
Expiry Date:	24 months



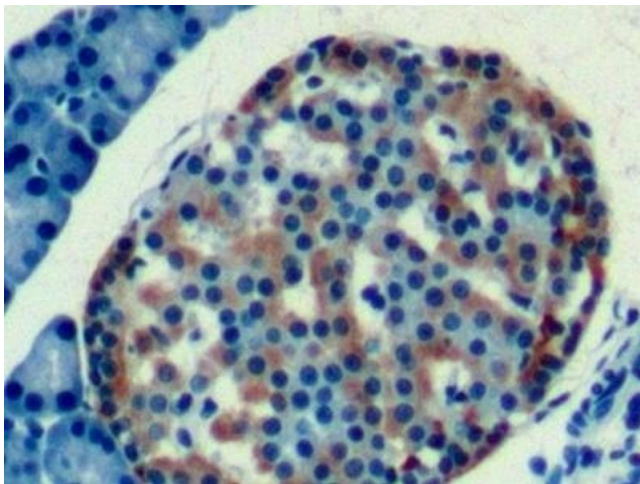
Western Blotting

Image 1. Detection of CLU in Rat Plasma using Monoclonal Antibody to Clusterin (CLU)



Western Blotting

Image 2. Detection of Recombinant CLU, Rat using Monoclonal Antibody to Clusterin (CLU)



Immunohistochemistry

Image 3. Detection of CLU in Rat Pancreas Tissue using Monoclonal Antibody to Clusterin (CLU)

Please check the [product details page](#) for more images. Overall 4 images are available for ABIN7426739.