

Datasheet for ABIN7426778
anti-KRT6A antibody (AA 163-468)

3 Images

[Go to Product page](#)

Overview

Quantity:	100 µL
Target:	KRT6A
Binding Specificity:	AA 163-468
Reactivity:	Human
Host:	Mouse
Clonality:	Monoclonal
Conjugate:	This KRT6A antibody is un-conjugated
Application:	Western Blotting (WB), Immunohistochemistry (IHC), Immunoprecipitation (IP), Immunocytochemistry (ICC)

Product Details

Purpose:	Monoclonal Antibody to Keratin 6A (KRT6A)
Immunogen:	Recombinant Keratin 6A (KRT6A) corresponding to Glu163~Leu468 (Accession # P02538)
Clone:	D4
Isotype:	IgG
Specificity:	The antibody is a mouse monoclonal antibody raised against KRT6A. It has been selected for its ability to recognize KRT6A in immunohistochemical staining and western blotting.
Cross-Reactivity:	Mouse, Pig
Purification:	Protein A + Protein G affinity chromatography

Target Details

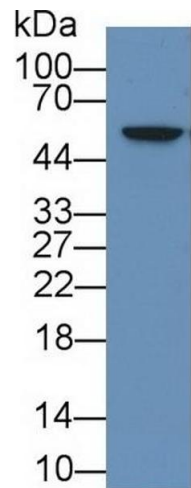
Target:	KRT6A
Alternative Name:	Keratin 6A (KRT6A Products)
Background:	K6A, KRT6C, KRT6D, CK6C, K6C, CK6D, K6D, Keratin 6C, Keratin 6D, Keratin, type II cytoskeletal 6A, Type-II keratin Kb6

Application Details

Application Notes:	Western blotting: 0.5-5 µg/mL Immunohistochemistry: 5-30 µg/mL Immunocytochemistry: 5-30 µg/mL Optimal working dilutions must be determined by end user.
Comment:	The thermal stability is described by the loss rate. The loss rate was determined by accelerated thermal degradation test, that is, incubate the protein at 37°C for 48h, and no obvious degradation and precipitation were observed. The loss rate is less than 5% within the expiration date under appropriate storage condition.
Restrictions:	For Research Use only

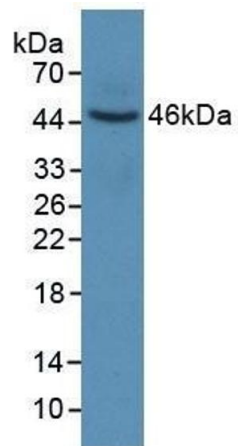
Handling

Format:	Liquid
Buffer:	0.01M PBS, pH 7.4, containing 0.05 % Proclin-300, 50 % glycerol.
Preservative:	ProClin
Precaution of Use:	This product contains ProClin: a POISONOUS AND HAZARDOUS SUBSTANCE which should be handled by trained staff only.
Storage:	4 °C,-20 °C
Storage Comment:	Store at 4°C for frequent use. Stored at -20°C in a manual defrost freezer for two year without detectable loss of activity. Avoid repeated freeze-thaw cycles.
Expiry Date:	24 months



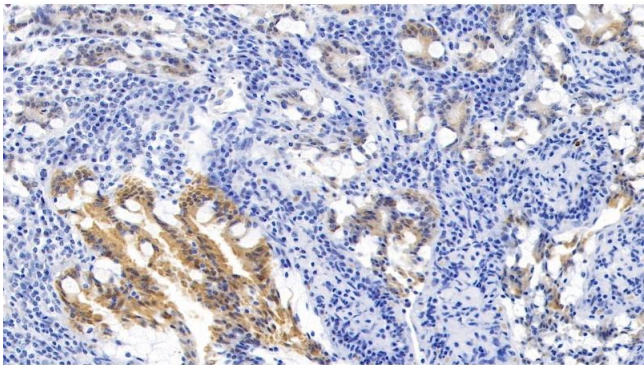
Western Blotting

Image 1. Detection of KRT6A in Human MCF7 cell lysate using Monoclonal Antibody to Keratin 6A (KRT6A)



Western Blotting

Image 2. Detection of Recombinant KRT6A, Human using Monoclonal Antibody to Keratin 6A (KRT6A)



Immunohistochemistry

Image 3. Detection of KRT6A in Human Small intestine Tissue using Monoclonal Antibody to Keratin 6A (KRT6A)